

**LEGEND**

- BRICK PAVER REMOVAL
- GRAVEL REMOVAL
- ASPH PVT REMOVAL
- CONC PVT REMOVAL (INCL CURB)
- SIDEWALK PVT REMOVAL
- TREE REMOVAL
- LIMITS OF REMOVAL

- NOTES**
1. SEE TRAFFIC SIGNAL SHEETS T1-T92 FOR TRAFFIC SIGNAL REMOVAL INFORMATION
  2. SEE SIGNAGE & PAVEMENT MARKING SHEETS 188-193 FOR TRAFFIC SIGN REMOVALS, RELOCATIONS, AND REPLACEMENTS.
  3. SEE WATER LINE SHEETS (32-54), SANITARY SWEET SHEETS (57-80), STORM DRAIN SHEETS (82-84), FOR LIMITS OF WATER, SANITARY SEWER, AND STORM DRAIN REMOVAL & ABANDONMENTS.
  4. ALL CURB INLETS WITHIN LIMITS OF PAVEMENT RECONSTRUCTION SHALL BE REMOVED.
  5. PRESERVE & PROTECT EXISTING MANHOLES AND VALVES UNTIL REPLACED.
  6. \*\* DENOTES A REMOVAL ITEM PAID FOR UNDER THE "SITE PREPARATION" BID ITEM. NO SEPARATE PAY WILL BE CONSIDERED.

Drawing: O:\PROJECTS\ADD12615\cad\sheet\17-22 DEMOLITION PLAN.dwg at Aug 06, 2021 4:18pm by zgroves  
Layout: Layout1.dwg - XBP-PAVING-ENR-DWG - seal-JLM.dwg - SEAL-IMP.dwg

no.	revision	by	date
1	REISSUED FOR GREENHILL ROW NEGOTIATION	CAE	07/09/21

**teague nall and perkins, inc**  
 5237 N. Riverside Drive, Suite 100  
 Fort Worth, Texas 76137  
 817.336.5773 ph 817.336.2813 fx  
 www.tnpsc.com  
 TBPELS: ENGR F-230; SURV 10011600, 10011601, 10194381  
 GBPE: PEF007431; TBAE: BR 2673



scale	horiz	1"=40'
vert	n/a	
date	Aug 2021	

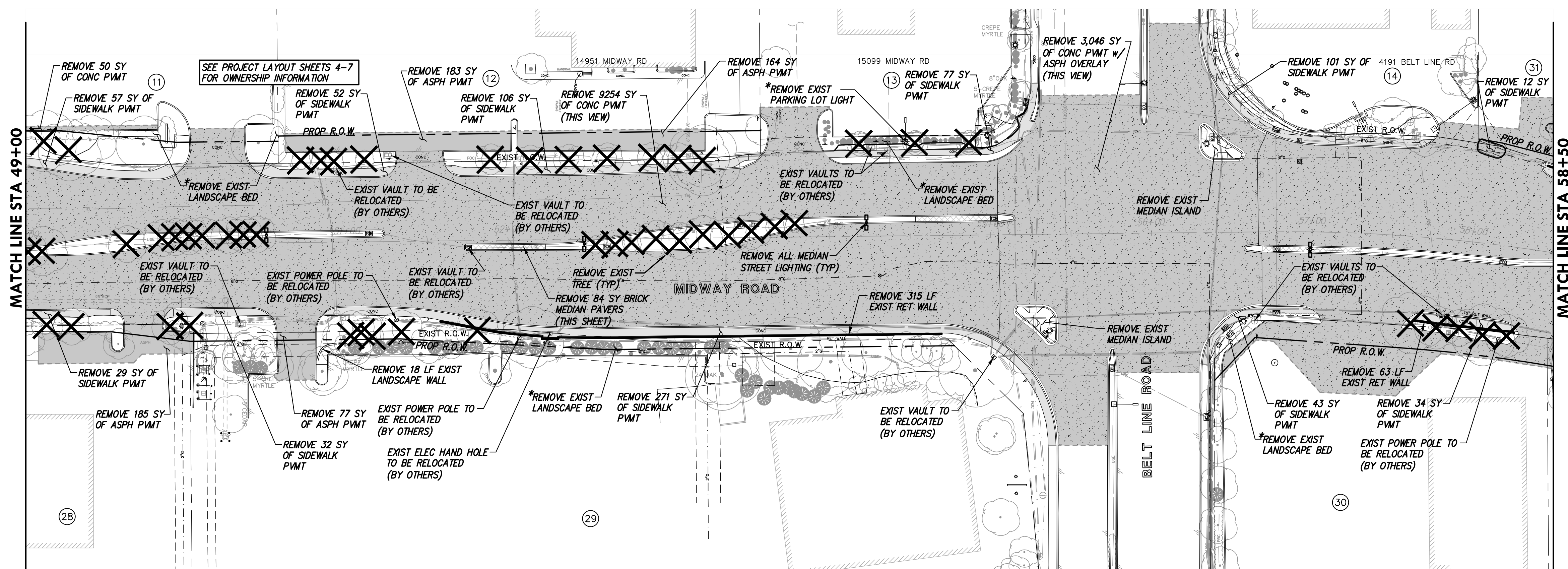
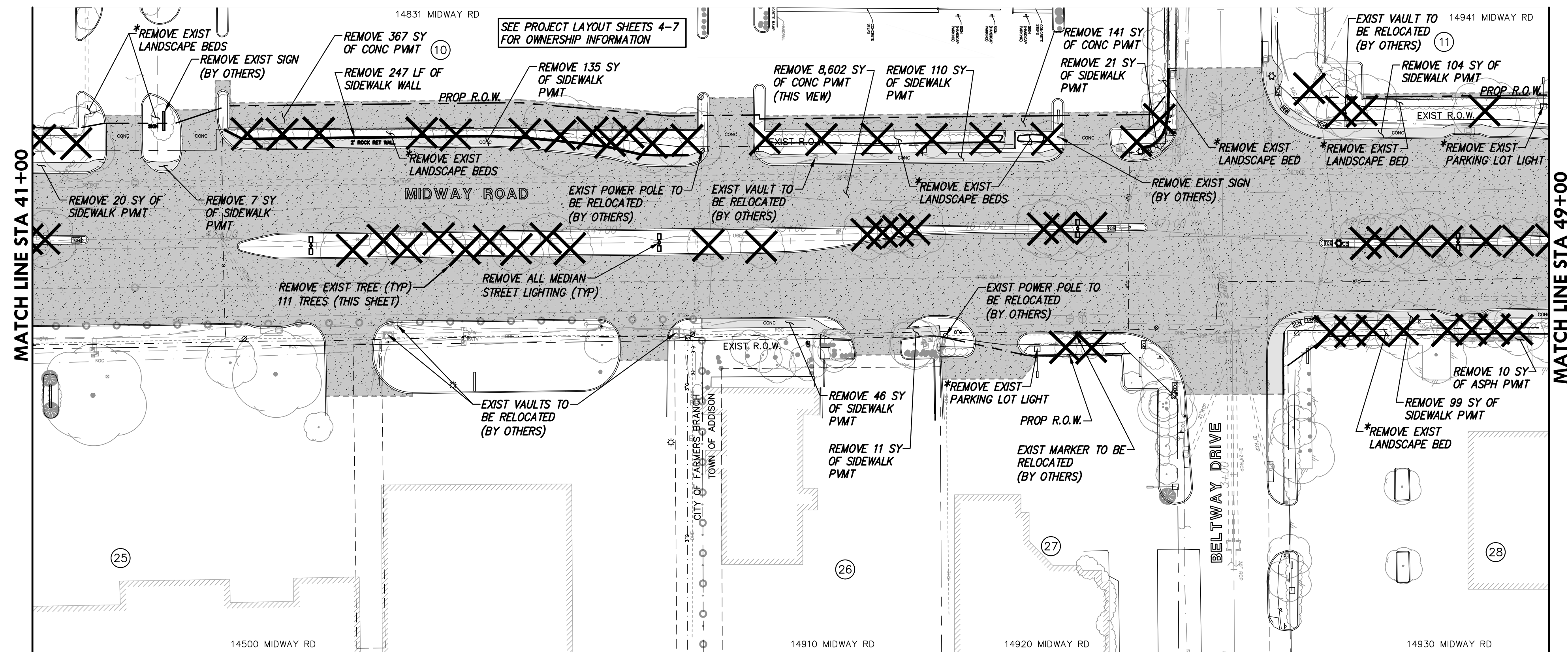


STATE OF TEXAS  
 LICENSED PROFESSIONAL ENGINEER  
 CHRIS A. EDWARDS  
 118947  
 Date: 8/5/2021

Town of Addison, Texas  
 Construction Plans for  
**Midway Road Revitalization**  
 Demolition Plan (1 of 6)

tnp project  
 ADD12615  
 sheet  
**17**  
 of  
 373





**LEGEND**

BRICK PAVER REMOVAL	
GRAVEL REMOVAL	
ASPH PVMT REMOVAL	
CONC PVMT REMOVAL (INCL CURB)	
SIDEWALK PVMT REMOVAL	
TREE REMOVAL	
LIMITS OF REMOVAL	

- NOTES**
- SEE TRAFFIC SIGNAL SHEETS T1-T92 FOR TRAFFIC SIGNAL REMOVAL INFORMATION
  - SEE SIGNAGE & PAVEMENT MARKING SHEETS 188-193 FOR TRAFFIC SIGN REMOVALS, RELOCATIONS, AND REPLACEMENTS.
  - SEE WATER LINE SHEETS (32-54), SANITARY SEWER SHEETS (57-80), STORM DRAIN SHEETS (82-84), FOR LIMITS OF WATER, SANITARY SEWER, AND STORM DRAIN REMOVAL & ABANDONMENTS.
  - ALL CURB INLETS WITHIN LIMITS OF PAVEMENT RECONSTRUCTION SHALL BE REMOVED.
  - PRESERVE & PROTECT EXISTING MANHOLES AND VALVES UNTIL REPLACED.
  - \* DENOTES A REMOVAL ITEM PAID FOR UNDER THE "SITE PREPARATION" BID ITEM. NO SEPARATE PAY WILL BE CONSIDERED.

Drawing: C:\PROJECTS\ADD12615\add12615.dwg at Nov 05, 2020 5:15pm by cedwards  
 Layout: Layout(3) - Add-Bldg.dwg - Add-Bldg.dwg - Add-Bldg.dwg - Add-Bldg.dwg - Add-Bldg.dwg - Add-Bldg.dwg - Add-Bldg.dwg - Add-Bldg.dwg - Add-Bldg.dwg - Add-Bldg.dwg

no.	revision	by	date

**teague nall and perkins, inc**  
 5237 N. Riverside Drive, Suite 100  
 Fort Worth, Texas 76137  
 817.336.5773 ph 817.336.2813 fx  
 www.tnpsc.com  
 TBPELS: ENGR F-230; SURV 10011600, 10011601, 10194381  
 GBPE: PEF007431; TBAE: BR 2673

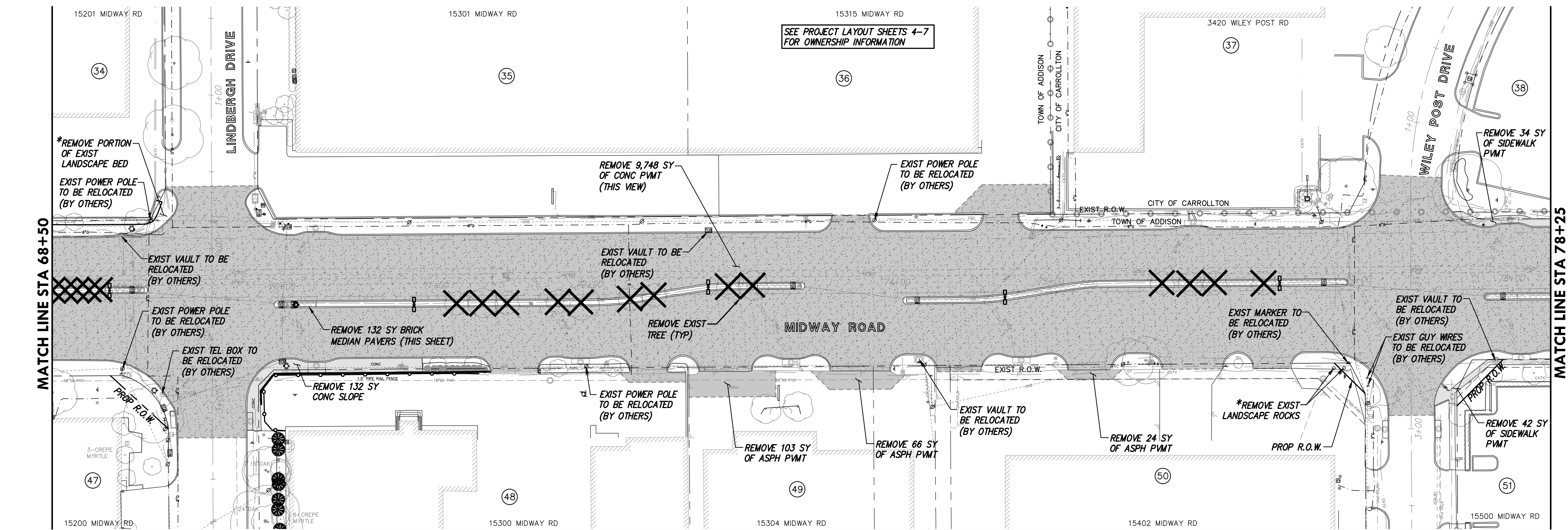
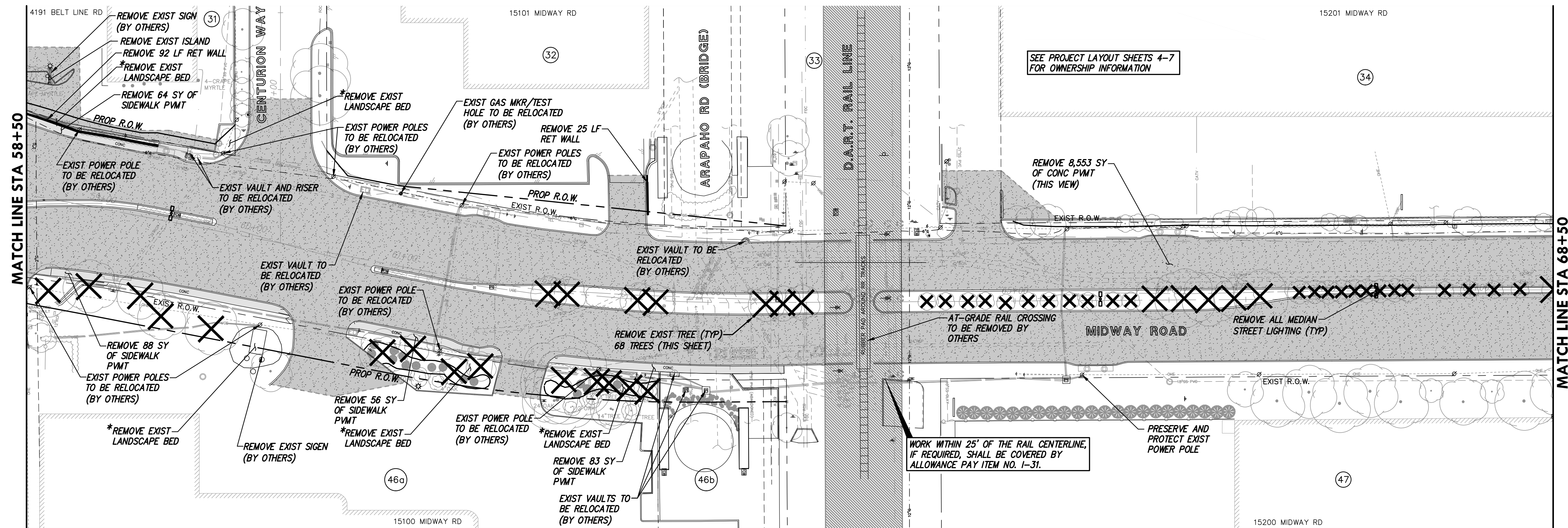


scale  
 horiz  
**1"=40'**  
 vert  
 n/a  
 date  
**Sep 2020**



Town of Addison, Texas  
 Construction Plans for  
**Midway Road Revitalization**  
 Demolition Plan (3 of 6)

tnp project  
 ADD12615  
 sheet  
**19**  
 of  
**373**



**LEGEND**

BRICK PAVER REMOVAL	
GRAVEL REMOVAL	
ASPH PVMT REMOVAL	
CONC PVMT REMOVAL (INCL CURB)	
SIDEWALK PVMT REMOVAL	
TREE REMOVAL	
LIMITS OF REMOVAL	

- NOTES**
- SEE TRAFFIC SIGNAL SHEETS T1-T92 FOR TRAFFIC SIGNAL REMOVAL INFORMATION
  - SEE SIGNAGE & PAVEMENT MARKING SHEETS 188-193 FOR TRAFFIC SIGN REMOVALS, RELOCATIONS, AND REPLACEMENTS.
  - SEE WATER LINE SHEETS (32-54), SANITARY SEWER SHEETS (57-80), STORM DRAIN SHEETS (82-84), FOR LIMITS OF WATER, SANITARY SEWER, AND STORM DRAIN REMOVAL & ABANDONMENTS.
  - ALL CURB INLETS WITHIN LIMITS OF PAVEMENT RECONSTRUCTION SHALL BE REMOVED.
  - PRESERVE & PROTECT EXISTING MANHOLES AND VALVES UNTIL REPLACED.
  - \*\* DENOTES A REMOVAL ITEM PAID FOR UNDER THE "SITE PREPARATION" BID ITEM. NO SEPARATE PAY WILL BE CONSIDERED.

Drawing: C:\PROJETS\ADD12615\cad\plans\17-22 DEMOLITION PLAN.dwg of Nov 05, 2020 2:53pm by ctedwards  
 Layout: Layout(4) - Add-BASE.dwg - Add-BASE.dwg - Add-BASE.dwg - Add-BASE.dwg - Add-BASE.dwg - Add-BASE.dwg - Add-BASE.dwg - Add-BASE.dwg - Add-BASE.dwg - Add-BASE.dwg

no.	revision	by	date
2	SHEET REISSUED FOR ADDENDUM # 2	CAE	10/26/20

**teague nall and perkins, inc**  
 5237 N. Riverside Drive, Suite 100  
 Fort Worth, Texas 76137  
 817.336.5773 ph 817.336.2813 fx  
 www.tnpsc.com  
 TBPELS: ENGR F-230; SURV 10011600, 10011601, 10194381  
 GBPE: PEF007431; TBAE: BR 2673

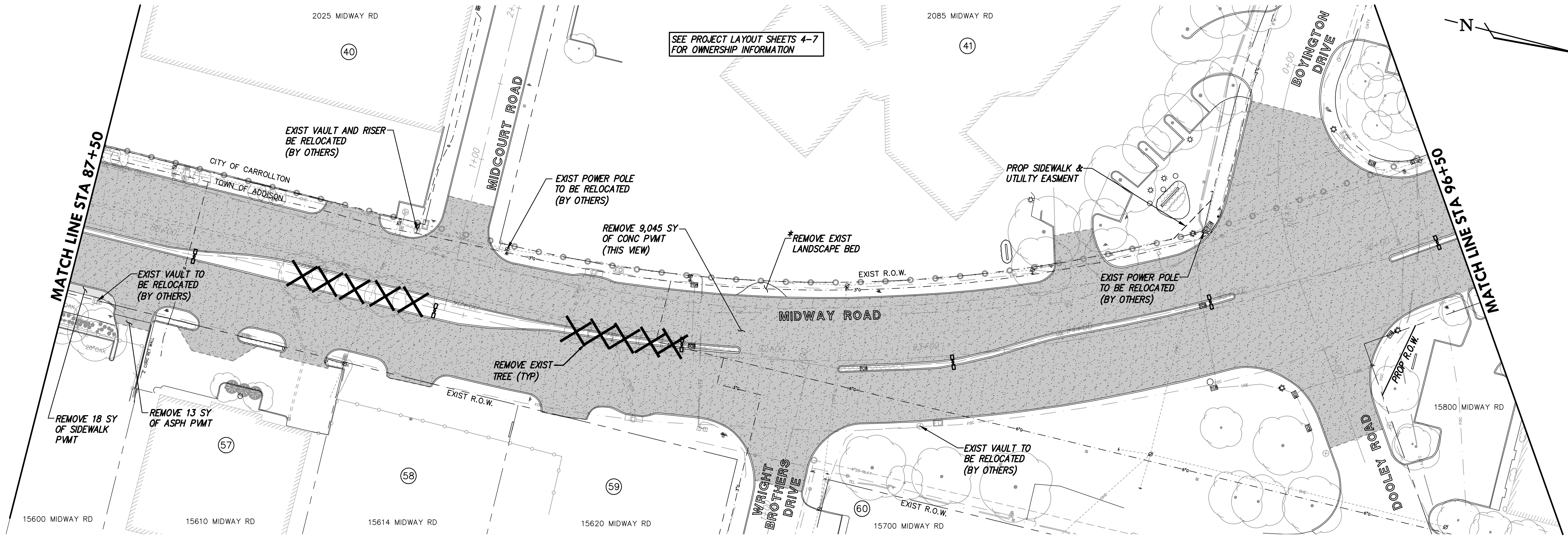
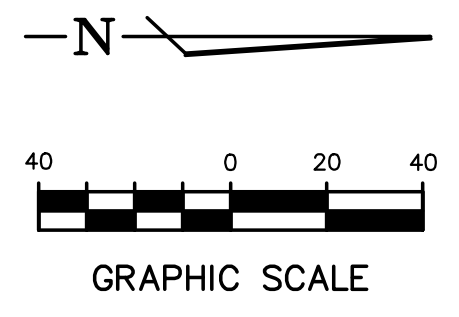
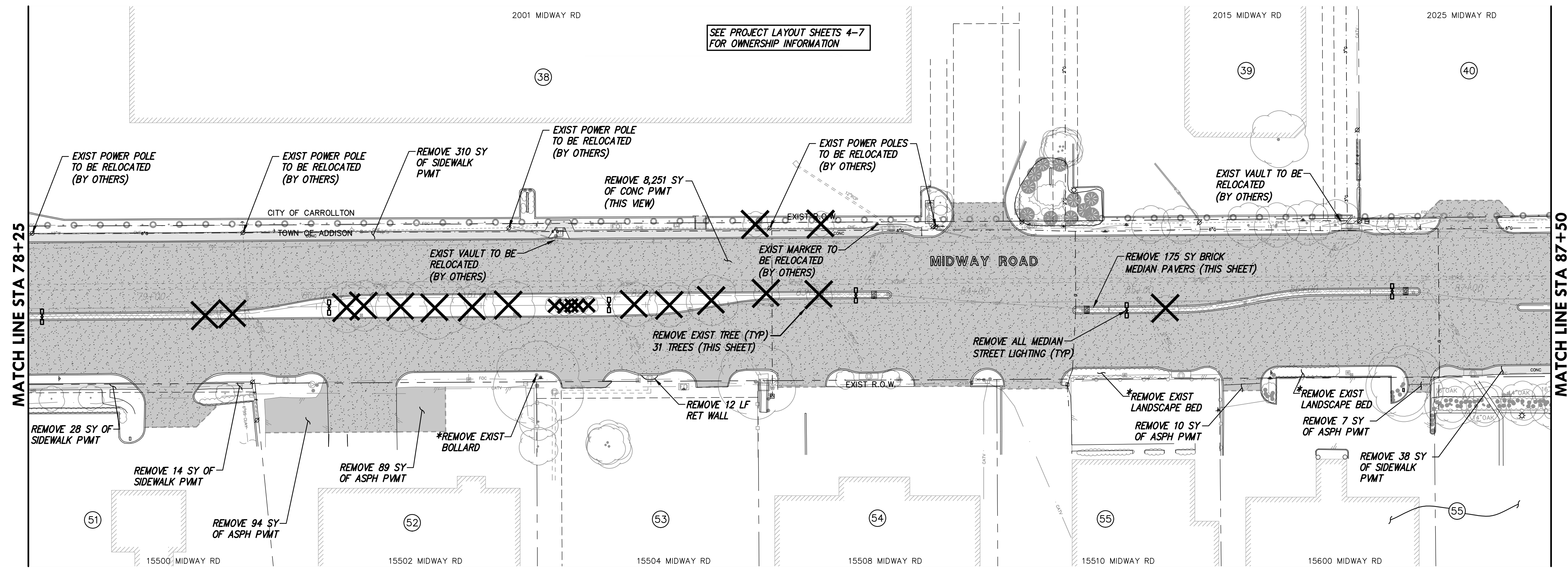


scale  
 horiz  
 1"=40'  
 vert  
 n/a  
 date  
 Sep 2020



Town of Addison, Texas  
 Construction Plans for  
**Midway Road Revitalization**  
 Demolition Plan (4 of 6)

tnp project  
 ADD12615  
 sheet  
**20**  
 of  
**373**



**LEGEND**

BRICK PAVER REMOVAL	
GRAVEL REMOVAL	
ASPH PVMT REMOVAL	
CONC PVMT REMOVAL (INCL CURB)	
SIDEWALK PVMT REMOVAL	
TREE REMOVAL	
LIMITS OF REMOVAL	

- NOTES**
- SEE TRAFFIC SIGNAL SHEETS T1-T92 FOR TRAFFIC SIGNAL REMOVAL INFORMATION
  - SEE SIGNAGE & PAVEMENT MARKING SHEETS 188-193 FOR TRAFFIC SIGN REMOVALS, RELOCATIONS, AND REPLACEMENTS.
  - SEE WATER LINE SHEETS (32-54), SANITARY SEWER SHEETS (57-80), STORM DRAIN SHEETS (82-84), FOR LIMITS OF WATER, SANITARY SEWER, AND STORM DRAIN REMOVAL & ABANDONMENTS.
  - ALL CURB INLETS WITHIN LIMITS OF PAVEMENT RECONSTRUCTION SHALL BE REMOVED.
  - PRESERVE & PROTECT EXISTING MANHOLES AND VALVES UNTIL REPLACED.
  - \*\* DENOTES A REMOVAL ITEM PAID FOR UNDER THE "SITE PREPARATION" BID ITEM. NO SEPARATE PAY WILL BE CONSIDERED.

Drawing: C:\PROJECTS\ADD12615\add12615.dwg at Nov 05, 2020 2:54pm by ctedwards  
 Layout: Layout(3) - Add12615.dwg - Add12615.dwg - Add12615.dwg - Add12615.dwg - Add12615.dwg - Add12615.dwg - Add12615.dwg - Add12615.dwg - Add12615.dwg - Add12615.dwg

no.	revision	by	date

**teague nall and perkins, inc**  
 5237 N. Riverside Drive, Suite 100  
 Fort Worth, Texas 76137  
 817.336.5773 ph 817.336.2813 fx  
 www.tnpsc.com  
 TBPELS: ENGR F-230; SURV 10011600, 10011601, 10194381  
 GBPE: PEF007431; TBAE: BR 2673

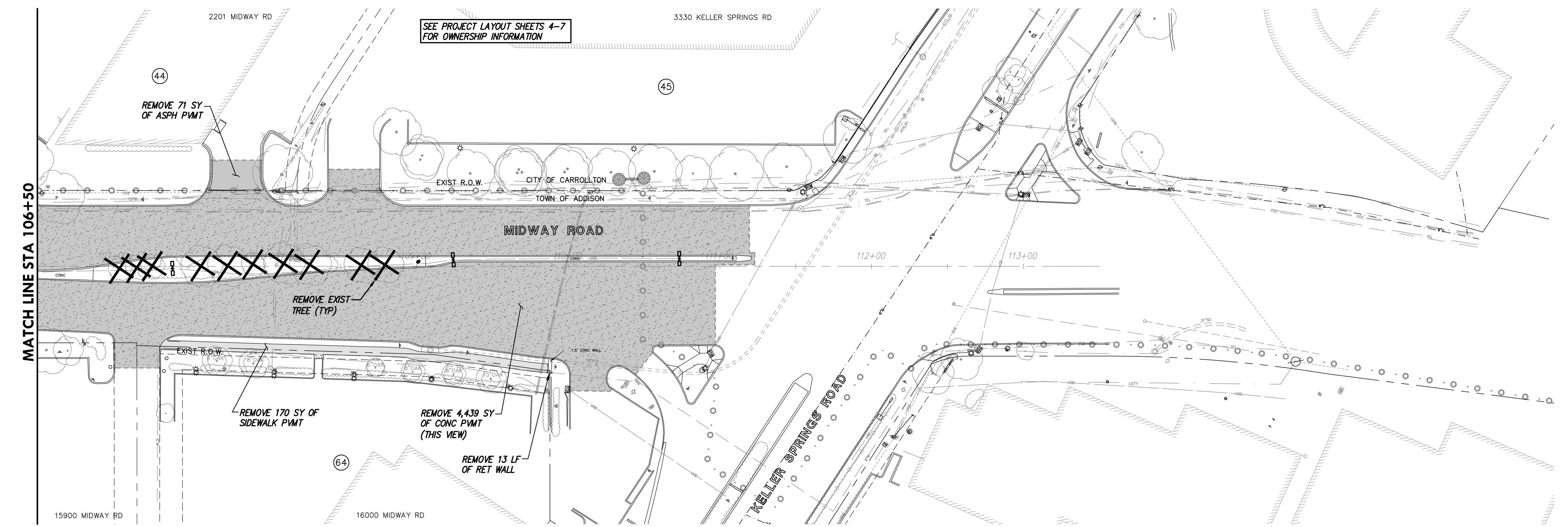
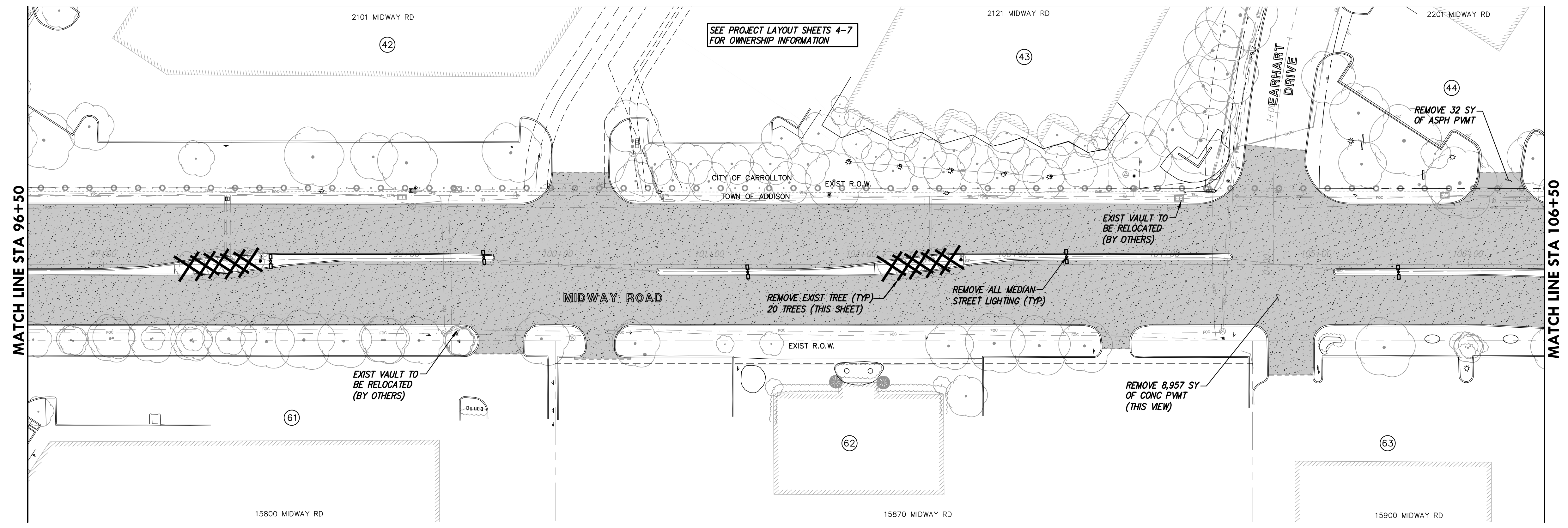


scale  
 horiz  
 1"=40'  
 vert  
 n/a  
 date  
 Sep 2020



Town of Addison, Texas  
 Construction Plans for  
**Midway Road Revitalization**  
 Demolition Plan (5 of 6)

tnp project  
 ADD12615  
 sheet  
**21**  
 of  
**373**



**LEGEND**

BRICK PAVER REMOVAL	
GRAVEL REMOVAL	
ASPH PVMT REMOVAL	
CONC PVMT REMOVAL (INCL CURB)	
SIDEWALK PVMT REMOVAL	
TREE REMOVAL	
LIMITS OF REMOVAL	

- NOTES**
- SEE TRAFFIC SIGNAL SHEETS T1-T92 FOR TRAFFIC SIGNAL REMOVAL INFORMATION
  - SEE SIGNAGE & PAVEMENT MARKING SHEETS 188-193 FOR TRAFFIC SIGN REMOVALS, RELOCATIONS, AND REPLACEMENTS.
  - SEE WATER LINE SHEETS (32-54), SANITARY SEWER SHEETS (57-80), STORM DRAIN SHEETS (82-84), FOR LIMITS OF WATER, SANITARY SEWER, AND STORM DRAIN REMOVAL & ABANDONMENTS.
  - ALL CURB INLETS WITHIN LIMITS OF PAVEMENT RECONSTRUCTION SHALL BE REMOVED.
  - PRESERVE & PROTECT EXISTING MANHOLES AND VALVES UNTIL REPLACED.
  - \*\* DENOTES A REMOVAL ITEM PAID FOR UNDER THE "SITE PREPARATION" BID ITEM. NO SEPARATE PAY WILL BE CONSIDERED.

Drawing: C:\PROJECTS\ADD12615\cadd\plans\17-22 DEMOLITION PLAN.dwg at Nov 05, 2020 2:54pm by cswarner  
 Layout: Layout(6) - Add-Base.dwg - Add-Base.dwg - Add-Base.dwg - Add-Base.dwg - Add-Base.dwg - Add-Base.dwg - Add-Base.dwg - Add-Base.dwg - Add-Base.dwg - Add-Base.dwg

no.	revision	by	date

**teague nall and perkins, inc**  
 5237 N. Riverside Drive, Suite 100  
 Fort Worth, Texas 76137  
 817.336.5773 ph 817.336.2813 fx  
 www.tnpsc.com  
 TBPELS: ENGR F-230; SURV 10011600, 10011601, 10194381  
 GBPE: PEF007431; TBAE: BR 2673



scale  
 horiz  
**1"=40'**  
 vert  
 n/a  
 date  
**Sep 2020**



Professional Engineer  
 CHRIS A. EDWARDS  
 118947  
 Date: 9/29/2020

Town of Addison, Texas  
 Construction Plans for  
**Midway Road Revitalization**  
 Demolition Plan (6 of 6)

tnp project  
 ADD12615  
 sheet  
**22**  
 of  
**373**