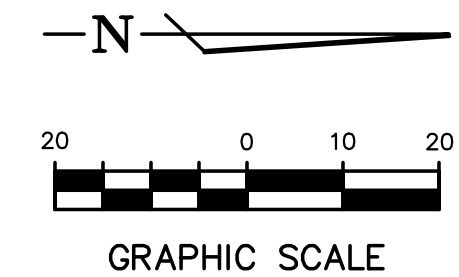
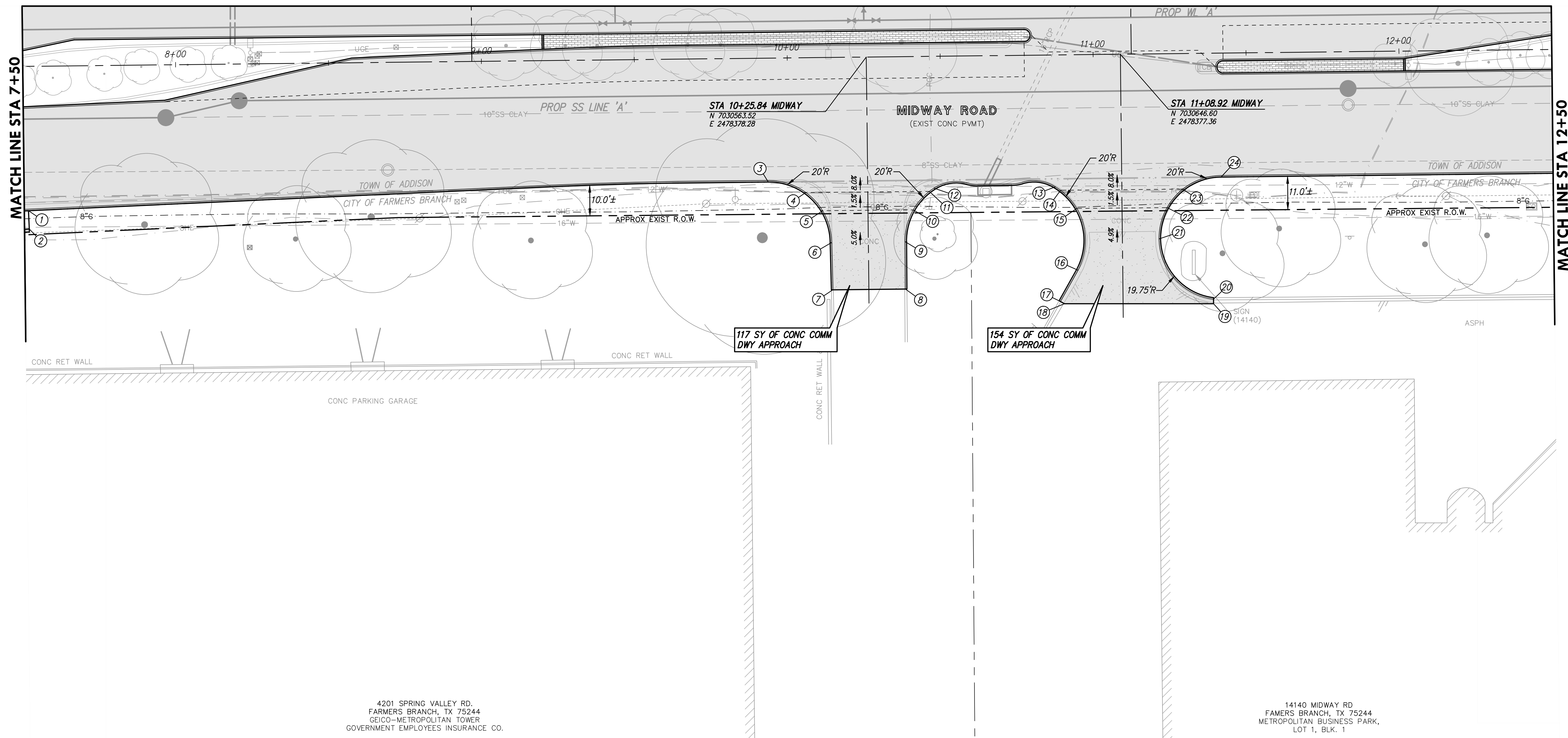


MATCH LINE SHEET 128



4201 SPRING VALLEY RD.
FARMERS BRANCH, TX 75244
GEICO-METROPOLITAN TOWER
GOVERNMENT EMPLOYEES INSURANCE CO.

14140 MIDWAY RD
FARMERS BRANCH, TX 75244
METROPOLITAN BUSINESS PARK,
LOT 1, BLK. 1

POINT DATA						
#	DESC	STA	OFFSET	ELEV	TC/TP	COMMENT
1	PI	7+51.37	47.19' RT	591.46	T/C	Ø B/C
2	PI	7+51.58	53.18' RT	591.55	B/W	-
3	PCR	9+83.34	40.50' RT	591.94	T/C	Ø B/C
4	GB	10+05.61	44.07' RT	591.72	T/P	-
5	GB	10+11.00	50.09' RT	591.78	T/P	-
6	PCR	10+13.84	60.50' RT	592.19	T/P	-
7	PI	10+14.07	75.97' RT	592.83	T/P	MATCH EXIST
8	PI	10+37.78	76.00' RT	592.96	T/P	MATCH EXIST
9	PCR	10+37.84	60.50' RT	592.17	T/P	-
10	GB	10+40.65	50.15' RT	592.12	T/P	-
11	GB	10+45.96	44.16' RT	591.52	T/P	-
12	PCR	10+47.48	43.11' RT	591.44	T/P	-
13	PCR	10+87.21	43.11' RT	591.46	T/P	-
14	GB	10+88.86	44.25' RT	592.05	T/P	-
15	GB	10+94.12	50.27' RT	591.65	T/P	-

POINT DATA						
#	DESC	STA	OFFSET	ELEV	TC/TP	COMMENT
16	PCR	10+94.27	70.47' RT	592.38	T/P	-
17	PI	10+88.43	80.63' RT	592.92	T/P	MATCH EXIST
18	PI	10+89.73	81.37' RT	592.81	T/P	MATCH EXIST
19	PI	11+38.49	81.92' RT	594.35	T/P	MATCH EXIST
20	PCR	11+38.50	80.42' RT	594.33	T/P	MATCH EXIST
21	PCC	11+20.92	60.50' RT	592.39	T/P	-
22	GB	11+23.62	50.33' RT	591.79	T/P	-
23	GB	11+28.80	44.34' RT	591.73	T/P	-
24	PCR	11+41.42	40.50' RT	591.95	T/C	Ø B/C

- NOTES:
- ALL DIMENSIONS AND RADII LABELS ARE TO BACK OF CURB, UNLESS OTHERWISE NOTED.
 - ALL DATA POINTS DRIVEWAYS, RAMPS, AND SIDEWALKS ARE TO FACE OF CURB OR WALL, UNLESS OTHERWISE NOTED.
 - SEE SHEETS 85-107 FOR ROADWAY AND MEDIAN DESIGN INFORMATION.
 - SEE SHEETS 173-178 FOR INTERSECTION AND SIDE STREET DESIGN INFORMATION.
 - SEE SHEETS 17-22 FOR LIMITS OF PAVEMENT, SIDEWALK, RET WALL, TREE, AND OTHER MISCELLANEOUS REMOVALS.
 - SEE SHEETS 17-22 FOR A DETAILED INVENTORY OF UTILITIES AND APPURTENANCES TO BE RELOCATED BY OTHERS.
 - SEE SHEET 220 FOR DETAILS OF PROPOSED SIDEWALK TRAIL WALL, SIDEWALK WALL, AND RETAINING WALLS, WITH STONE VENEER.

Drawing: C:\PROJECTS\ADD12615\cadd\sheet\145-167 EAST PARKWAY SHEETS.dwg at Nov 04, 2020 - 6:04pm by cehwards
 Layout: Layout(20) - File: xcp-base.dwg - XCP-BASE.DWG - XCP-PAVING-BASE.DWG - XCP-SEWER-BASE.DWG - XCP-WATER-BASE.DWG - XCP-STRIPING.DWG - XCD-STRIPING.DWG - XCD-STORM-BASE.DWG - XCD-WATER-BASE.DWG - XCD-SEAL-WHS.dwg

no.	revision	by	date

teague nall and perkins, inc
 5237 N. Riverside Drive, Suite 100
 Fort Worth, Texas 76137
 817.336.5773 ph 817.336.2813 fx
 www.tnpsc.com
 TBPELS: ENGR F-230; SURV 10011600, 10011601, 10194381
 GBPE: PEF007431; TBAE: BR 2673



scale
horiz
1"=20'
vert
n/a
date
Sep 2020



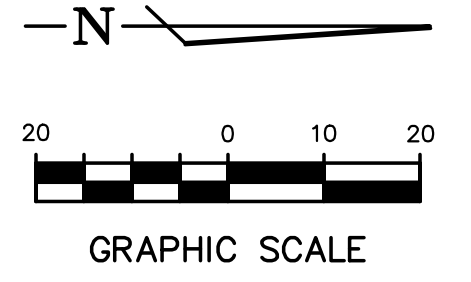
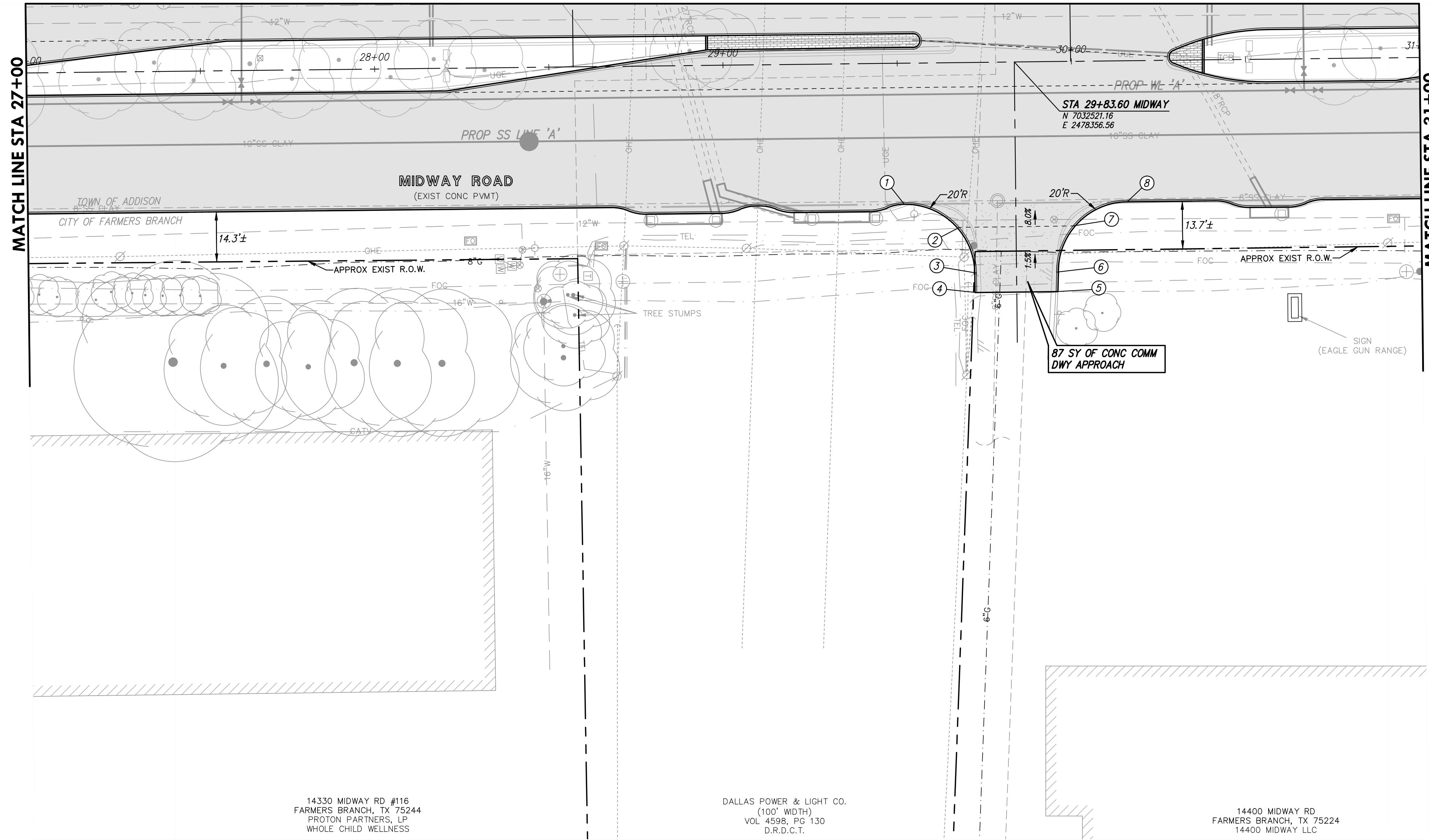
Professional Engineer Seal for Chris A. Edwards, License No. 118947, State of Texas. Signature of Chris A. Edwards, P.E., dated 9/29/2020.

Town of Addison, Texas
 Construction Plans for
Midway Road Revitalization
 East Parkway Plan
 (Sta 7+50 to Sta 12+50)

tnp project
ADD12615
sheet
151
of
373

RELEASED FOR CONSTRUCTION

MATCH LINE SHEET 132



14330 MIDWAY RD #116
FARMERS BRANCH, TX 75244
PROTON PARTNERS, LP
WHOLE CHILD WELLNESS

DALLAS POWER & LIGHT CO.
(100' WIDTH)
VOL 4598, PG 130
D.R.D.C.T.

14400 MIDWAY RD
FARMERS BRANCH, TX 75224
14400 MIDWAY LLC

POINT DATA						
#	DESC	STA	OFFSET	ELEV	TC/TP	COMMENT
1	PCR	29+51.60	40.50' RT	605.36	T/C	Ø B/C
2	GB	29+67.30	47.32' RT	605.72	T/P	-
3	PCR	29+72.10	60.50' RT	605.99	T/P	-
4	PI	29+72.10	66.07' RT	606.09	T/P	MATCH EXIST
5	PI	29+94.90	66.07' RT	606.42	T/P	MATCH EXIST
6	PCR	29+95.10	60.48' RT	606.35	T/P	-
7	GB	29+99.94	47.27' RT	606.24	T/P	-
8	PCR	30+15.60	40.50' RT	606.36	T/C	Ø B/C

- NOTES:
- ALL DIMENSIONS AND RADII LABELS ARE TO BACK OF CURB, UNLESS OTHERWISE NOTED.
 - ALL DATA POINTS DRIVEWAYS, RAMPS, AND SIDEWALKS ARE TO FACE OF CURB OR WALL, UNLESS OTHERWISE NOTED.
 - SEE SHEETS 85-107 FOR ROADWAY AND MEDIAN DESIGN INFORMATION.
 - SEE SHEETS 173-178 FOR INTERSECTION AND SIDE STREET DESIGN INFORMATION.
 - SEE SHEETS 17-22 FOR LIMITS OF PAVEMENT, SIDEWALK, RET WALL, TREE, AND OTHER MISCELLANEOUS REMOVALS.
 - SEE SHEETS 17-22 FOR A DETAILED INVENTORY OF UTILITIES AND APPURTENANCES TO BE RELOCATED BY OTHERS.
 - SEE SHEET 220 FOR DETAILS OF PROPOSED SIDEWALK TRAIL WALL, SIDEWALK WALL, AND RETAINING WALLS, WITH STONE VENEER.

Drawing: C:\PROJECTS\ADD12615\145-167 EAST PARKWAY SHEETS.dwg at Nov 04, 2020 - 6:10pm by cedwards
Layout: Layout(20) - 145-167 EAST PARKWAY SHEETS.dwg - XCD-BASE - XCD-WATER-BASE - XCD-PAVING-BASE - XCD-STRIPING - XCD-SS LINE 'A' - XCD-SS LINE 'B' - XCD-SS LINE 'C' - XCD-SS LINE 'D' - XCD-SS LINE 'E' - XCD-SS LINE 'F' - XCD-SS LINE 'G' - XCD-SS LINE 'H' - XCD-SS LINE 'I' - XCD-SS LINE 'J' - XCD-SS LINE 'K' - XCD-SS LINE 'L' - XCD-SS LINE 'M' - XCD-SS LINE 'N' - XCD-SS LINE 'O' - XCD-SS LINE 'P' - XCD-SS LINE 'Q' - XCD-SS LINE 'R' - XCD-SS LINE 'S' - XCD-SS LINE 'T' - XCD-SS LINE 'U' - XCD-SS LINE 'V' - XCD-SS LINE 'W' - XCD-SS LINE 'X' - XCD-SS LINE 'Y' - XCD-SS LINE 'Z'

no.	revision	by	date

teague nall and perkins, inc
5237 N. Riverside Drive, Suite 100
Fort Worth, Texas 76137
817.336.5773 ph 817.336.2813 fx
www.tnpsc.com
TBP/ELS: ENGR F-230; SURV 10011600, 10011601, 10194381
GBPE: PEF007431; TBAE: BR 2673



scale
horiz
1"=20'
vert
n/a
date
Sep 2020



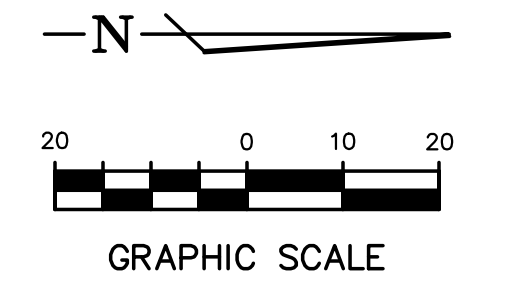
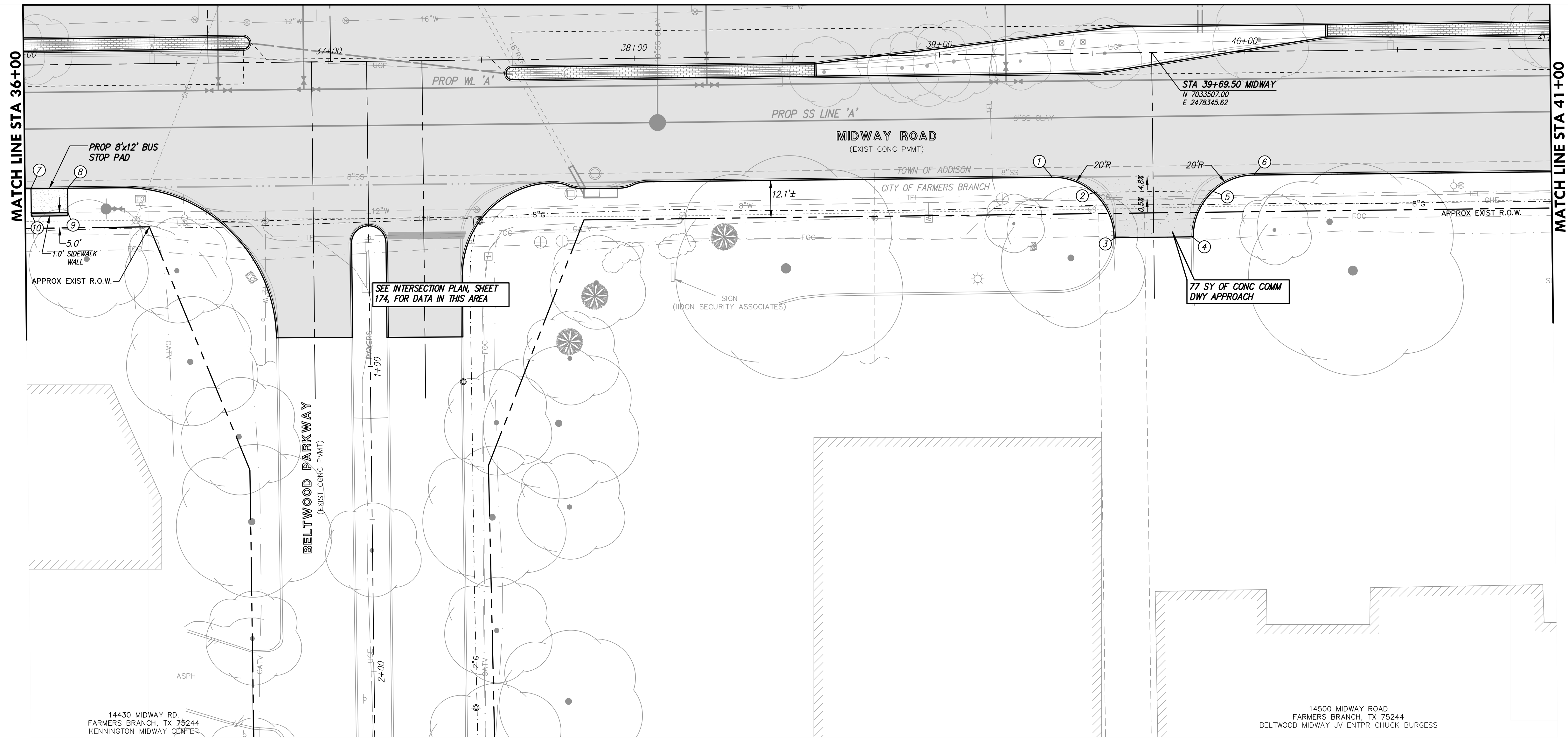
Professional Engineer Seal for Chris A. Edwards, License No. 118947, State of Texas. Signature of Chris A. Edwards, P.E., dated 9/29/2020.

Town of Addison, Texas
Construction Plans for
Midway Road Revitalization
East Parkway Plan
(Sta 27+00 to Sta 31+00)

tnp project
ADD12615
sheet
155
of
373

RELEASED FOR CONSTRUCTION

MATCH LINE SHEET 134



MATCH LINE STA 36+00

MATCH LINE STA 41+00

SEE INTERSECTION PLAN, SHEET 174, FOR DATA IN THIS AREA

77 SY OF CONC COMM DWY APPROACH

POINT DATA						
#	DESC	STA	OFFSET	ELEV	TC/TP	COMMENT
1	PCR	39+36.50	40.50' RT	616.40	T/C	Ø B/C
2	GB	39+50.53	45.56' RT	616.25	T/P	GRADE BREAK
3	PCR	39+57.00	60.50' RT	616.32	T/P	MATCH EXIST
4	PCR	39+82.00	60.50' RT	616.67	T/P	MATCH EXIST
5	GB	39+88.52	45.51' RT	616.56	T/P	GRADE BREAK
6	PCR	40+02.50	40.50' RT	616.90	T/C	Ø B/C
7	PI	36+01.99	40.50' RT	613.48	T/C	Ø B/C
8	PI	36+13.99	40.50' RT	613.62	T/C	Ø B/C
9	PI	36+11.99	48.50' RT	613.74	B/W	-
10	PI	36+01.99	48.50' RT	613.60	B/W	-

- NOTES:
- ALL DIMENSIONS AND RADII LABELS ARE TO BACK OF CURB, UNLESS OTHERWISE NOTED.
 - ALL DATA POINTS DRIVEWAYS, RAMPS, AND SIDEWALKS ARE TO FACE OF CURB OR WALL, UNLESS OTHERWISE NOTED.
 - SEE SHEETS 85-107 FOR ROADWAY AND MEDIAN DESIGN INFORMATION.
 - SEE SHEETS 173-178 FOR INTERSECTION AND SIDE STREET DESIGN INFORMATION.
 - SEE SHEETS 17-22 FOR LIMITS OF PAVEMENT, SIDEWALK, RET WALL, TREE, AND OTHER MISCELLANEOUS REMOVALS.
 - SEE SHEETS 17-22 FOR A DETAILED INVENTORY OF UTILITIES AND APPURTENANCES TO BE RELOCATED BY OTHERS.
 - SEE SHEET 220 FOR DETAILS OF PROPOSED SIDEWALK TRAIL WALL, SIDEWALK WALL, AND RETAINING WALLS, WITH STONE VENEER.

Drawing: C:\PROJECTS\ADD12615\cadd\plans\145-167 EAST PARKWAY SHEETS.dwg, 11/04/2020, 6:12pm, by cedwards
 Layout: Layout(3) - Area: 300-300.dwg - XDP-BASE.DWG - XDP-PAVING-BASE.DWG - XDP-SEWER-BASE.DWG - XDP-WATER-BASE.DWG - XDP-STRIPING.DWG - XDP-STORM-BASE.DWG - XDP-WATER-BASE.DWG - XDP-IR.dwg - SEAL-WKS.dwg

no.	revision	by	date

teague nall and perkins, inc
 5237 N. Riverside Drive, Suite 100
 Fort Worth, Texas 76137
 817.336.5773 ph 817.336.2813 fx
 www.tnpsc.com
 TBPELS: ENGR F-230; SURV 10011600, 10011601, 10194381
 GBPE: PE007431; TBAE: BR 2673



scale
 horiz
1"=20'
 vert
 n/a
 date
Sep 2020



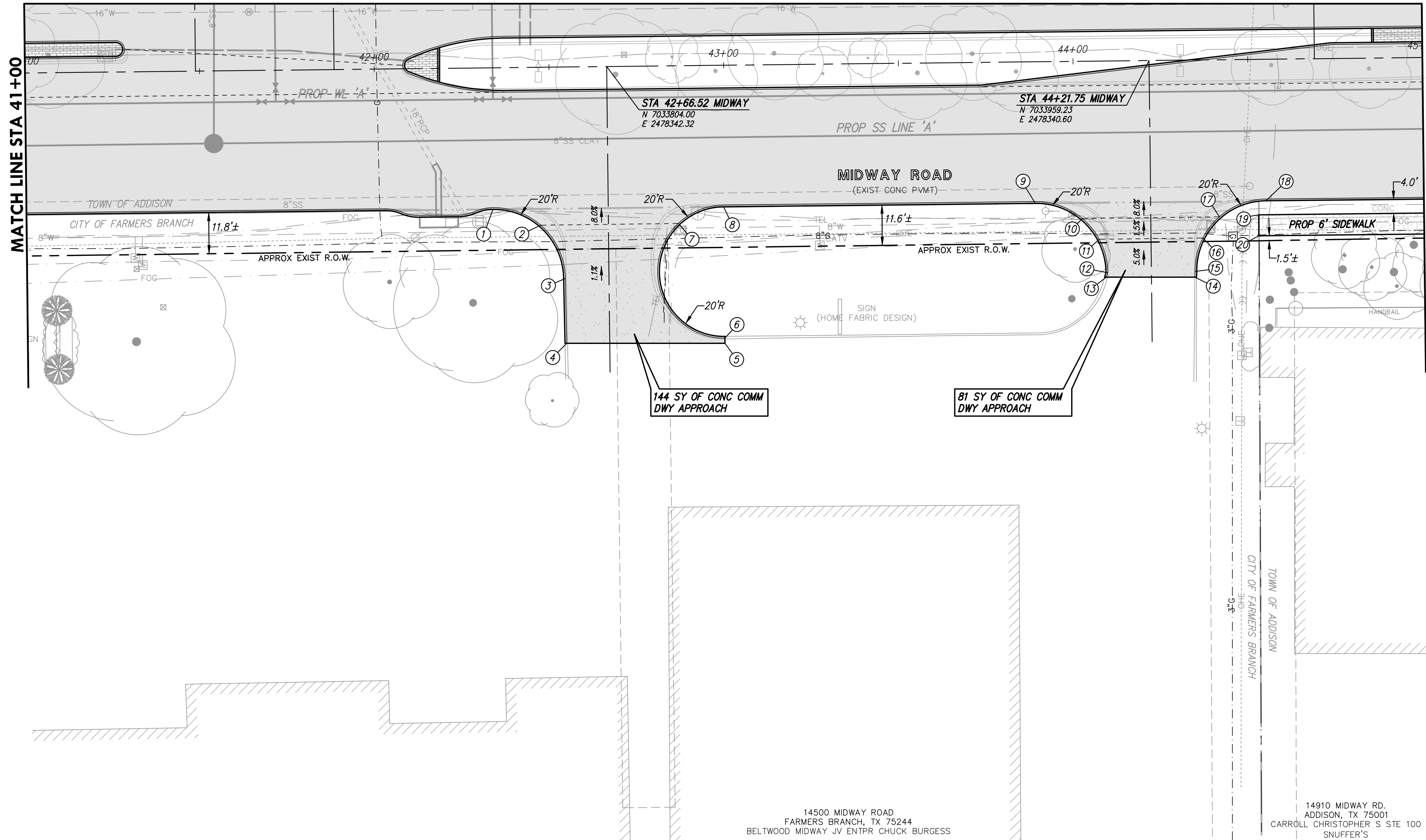
Professional Engineer Seal for Chris A. Edwards, License No. 118947, State of Texas. Signature of Chris A. Edwards, P.E., dated 9/29/2020.

Town of Addison, Texas
 Construction Plans for
Midway Road Revitalization
 East Parkway Plan
 (Sta 36+00 to Sta 41+00)

tnp project
ADD12615
 sheet
157
 of
373

RELEASED FOR CONSTRUCTION

MATCH LINE SHEET 135



14500 MIDWAY ROAD
FARMERS BRANCH, TX 75244
BELTWOOD MIDWAY JV ENTRR. CHUCK BURGESS

14910 MIDWAY RD.
ADDISON, TX 75001
CARROLL CHRISTOPHER S STE 100
SNUFFER'S

POINT DATA						
#	DESC	STA	OFFSET	ELEV	TC/TP	COMMENT
1	PCR	42+33.52	40.50' RT	618.54	T/C	● B/C
2	GB	42+47.14	45.18' RT	618.69	T/P	-
3	PCR	42+54.02	60.49' RT	618.90	T/P	-
4	PI	42+54.23	79.07' RT	619.10	T/P	MATCH EXIST
5	PI	42+99.49	79.57' RT	619.51	T/P	MATCH EXIST
6	PC	42+99.50	78.07' RT	619.49	T/P	MATCH EXIST
7	GB	42+86.52	45.13' RT	619.00	T/P	-
8	PCR	42+99.52	40.50' RT	619.18	T/C	● B/C
9	PCR	43+08.75	40.50' RT	619.86	T/C	● B/C
10	GB	44+02.15	44.98' RT	619.86	T/P	-
11	GB	44+06.91	50.98' RT	619.99	T/P	-
12	PCR	44+09.25	60.57' RT	620.64	T/P	-
13	PI	44+08.97	61.86' RT	620.73	T/P	MATCH EXIST
14	PI	44+34.14	62.14' RT	620.86	T/P	MATCH EXIST
15	PCR	44+34.25	60.48' RT	620.76	T/P	-
16	GB	44+36.62	50.94' RT	620.23	T/P	-
17	GB	44+41.41	44.94' RT	620.18	T/P	-
18	PCR	44+54.75	40.50' RT	620.37	T/C	● B/C
19	S/W	44+52.69	44.50' RT	620.42	T/P	-
20	S/W	44+52.63	50.50' RT	620.51	T/P	-

- NOTES:
1. ALL DIMENSIONS AND RADII LABELS ARE TO BACK OF CURB, UNLESS OTHERWISE NOTED.
 2. ALL DATA POINTS DRIVEWAYS, RAMPS, AND SIDEWALKS ARE TO FACE OF CURB OR WALL, UNLESS OTHERWISE NOTED.
 3. SEE SHEETS 85-107 FOR ROADWAY AND MEDIAN DESIGN INFORMATION.
 4. SEE SHEETS 173-178 FOR INTERSECTION AND SIDE STREET DESIGN INFORMATION.
 5. SEE SHEETS 17-22 FOR LIMITS OF PAVEMENT, SIDEWALK, RET WALL, TREE, AND OTHER MISCELLANEOUS REMOVALS.
 6. SEE SHEETS 17-22 FOR A DETAILED INVENTORY OF UTILITIES AND APPURTENANCES TO BE RELOCATED BY OTHERS.
 7. SEE SHEET 220 FOR DETAILS OF PROPOSED SIDEWALK TRAIL WALL, SIDEWALK WALL, AND RETAINING WALLS, WITH STONE VENEER.

Drawing: C:\PROJECTS\ADD12615\145-167 EAST PARKWAY SHEETS.dwg at Nov 04, 2020 - 6:13pm by cedwards
Layout: Layout135 - XCD-BASE.dwg - XCD-PAVING-BASE.dwg - XCD-WATER-BASE.dwg - XCD-STRIPING.dwg - XCD-STORM-BASE.dwg - XCD-WATER-BASE.dwg - XCD-STRIPING.dwg - XCD-SS.dwg - XCD-SS.dwg - XCD-SS.dwg

no.	revision	by	date

teague nall and perkins, inc
5237 N. Riverside Drive, Suite 100
Fort Worth, Texas 76137
817.336.5773 ph 817.336.2813 fx
www.tnpsc.com
TBPELS: ENGR F-230; SURV 10011600, 10011601, 10194381
GBPE: PEF007431; TBAE: BR 2673



scale
horiz
1"=20'
vert
n/a
date
Sep 2020

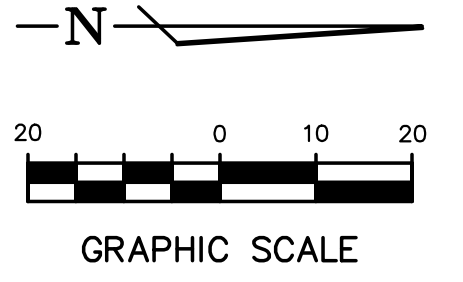
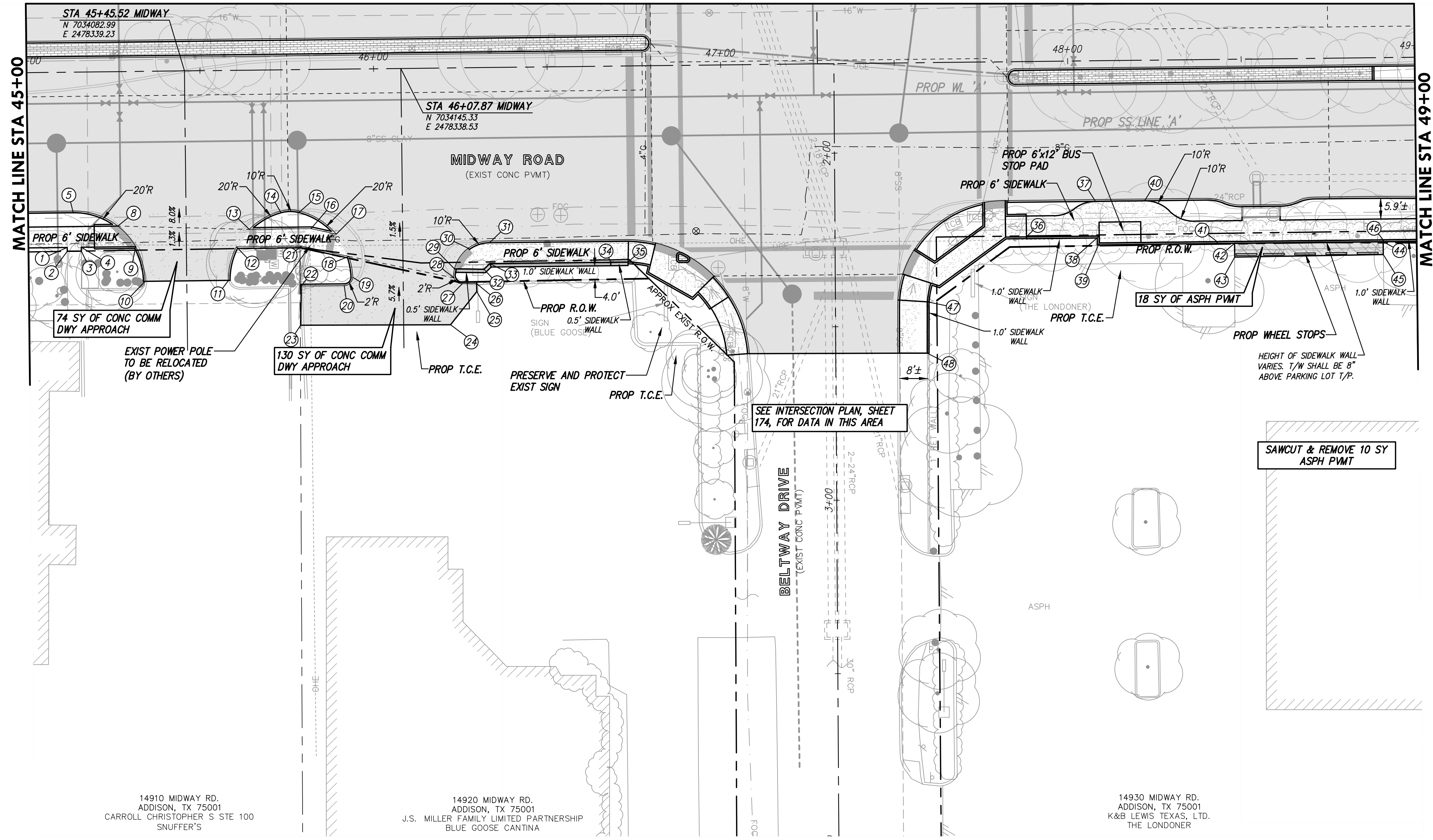


Town of Addison, Texas
Construction Plans for
Midway Road Revitalization
East Parkway Plan
(Sta 41+00 to Sta 45+00)

tnp project
ADD12615
sheet
158
of
373

RELEASED FOR CONSTRUCTION

MATCH LINE SHEET 136



MATCH LINE STA 45+00

MATCH LINE STA 49+00

14910 MIDWAY RD.
ADDISON, TX 75001
CARROLL CHRISTOPHER S STE 100
SNUFFER'S

14920 MIDWAY RD.
ADDISON, TX 75001
J.S. MILLER FAMILY LIMITED PARTNERSHIP
BLUE GOOSE CANTINA

14930 MIDWAY RD.
ADDISON, TX 75001
K&B LEWIS TEXAS, LTD.
THE LONDONER

POINT DATA						
#	DESC	STA	OFFSET	ELEV	TC/TP	COMMENT
1	S/W	45+11.17	50.50' RT	621.49	T/P	-
2	S/W	45+11.17	51.62' RT	621.51	T/P	MATCH EXIST
3	S/W	45+15.22	51.60' RT	621.51	T/P	MATCH EXIST
4	S/W	45+15.22	50.50' RT	621.49	T/P	-
5	PDR	45+13.02	40.50' RT	620.87	T/C	Ø B/C
8	S/W	45+25.84	44.50' RT	620.90	T/P	GRADE BREAK
9	S/W	45+30.92	50.50' RT	621.13	T/P	-
10	PDR	45+33.52	60.50' RT	621.45	T/P	MATCH EXIST
11	PDR	45+57.52	60.50' RT	621.64	T/P	MATCH EXIST
12	S/W	45+59.93	50.86' RT	621.43	T/P	-
13	S/W	45+63.67	45.86' RT	621.45	T/P	GRADE BREAK
14	PDR	45+72.88	41.17' RT	621.60	T/C	Ø B/C
15	PDR	45+78.03	41.18' RT	621.66	T/C	Ø B/C
16	S/W	45+81.49	45.86' RT	621.29	T/P	-
17	S/W	45+88.74	47.53' RT	621.40	T/P	-
18	S/W	45+92.31	53.99' RT	621.54	T/P	GRADE BREAK

POINT DATA						
#	DESC	STA	OFFSET	ELEV	TC/TP	COMMENT
19	PC	45+93.36	60.00' RT	622.01	T/P	-
20	PT	45+90.87	62.35' RT	622.13	T/P	-
21	S/W	45+78.69	50.86' RT	621.32	T/P	-
22	PI	45+78.44	62.35' RT	621.98	T/P	-
23	PDR	45+78.18	73.66' RT	622.88	T/P	MATCH EXIST
24	PI	46+21.38	73.98' RT	623.24	T/P	MATCH EXIST
25	PI	46+29.04	64.53' RT	623.18	T/P	MATCH EXIST
26	PI	46+29.01	62.21' RT	623.16	T/P	MATCH EXIST
27	PC	46+24.91	62.21' RT	622.40	T/P	-
28	S/W	46+22.53	60.49' RT	621.96	T/P	GRADE BREAK
29	S/W	46+22.69	57.91' RT	621.92	T/P	BEGIN SIDEWALK WALL
30	S/W	46+26.69	52.00' RT	621.87	T/P	-
31	PDR	46+32.87	50.49' RT	621.53	T/C	Ø B/C
32	S/W	46+31.19	58.10' RT	621.99	B/W	-
33	S/W	46+32.87	58.49' RT	621.62	B/W	SIDEWALK WALL TRANSITION
34	S/W	46+47.73	56.51' RT	622.42	B/W	SIDEWALK WALL TRANSITION

POINT DATA						
#	DESC	STA	OFFSET	ELEV	TC/TP	COMMENT
35	S/W	46+72.73	56.51' RT	622.46	B/W	END SIDEWALK WALL
36	S/W	47+87.57	50.50' RT	623.70	B/W	BEGIN SIDEWALK WALL
37	S/W	48+07.57	40.50' RT	623.72	T/C	Ø B/C
38	S/W	48+08.52	50.50' RT	623.88	T/P	-
39	S/W	48+08.52	52.50' RT	623.91	B/W	-
40	S/W	48+21.73	40.50' RT	623.84	T/C	Ø B/C
41	S/W	48+42.50	52.50' RT	624.19	B/W	SIDEWALK WALL TRANSITION
42	PI	48+47.50	53.05' RT	625.90	T/P	PARKING LOT
43	PI	48+47.50	57.01' RT	625.84	T/P	MATCH EXIST
44	PI	48+90.33	53.05' RT	625.89	T/P	PARKING LOT
45	PI	48+90.33	56.73' RT	625.83	T/P	MATCH EXIST
46	S/W	48+90.33	52.50' RT	624.60	B/W	SIDEWALK WALL TRANSITION
47	S/W	47+58.84	68.92' RT	623.39	B/W	BEGIN SIDEWALK WALL
48	S/W	47+58.62	83.71' RT	623.69	B/W	MATCH EXIST

- NOTES:
- ALL DIMENSIONS AND RADII LABELS ARE TO BACK OF CURB, UNLESS OTHERWISE NOTED.
 - ALL DATA POINTS DRIVEWAYS, RAMPS, AND SIDEWALKS ARE TO FACE OF CURB OR WALL, UNLESS OTHERWISE NOTED.
 - SEE SHEETS 85-107 FOR ROADWAY AND MEDIAN DESIGN INFORMATION.
 - SEE SHEETS 173-178 FOR INTERSECTION AND SIDE STREET DESIGN INFORMATION.
 - SEE SHEETS 17-22 FOR LIMITS OF PAVEMENT, SIDEWALK, RET WALL, TREE, AND OTHER MISCELLANEOUS REMOVALS.
 - SEE SHEETS 17-22 FOR A DETAILED INVENTORY OF UTILITIES AND APPURTENANCES TO BE RELOCATED BY OTHERS.
 - SEE SHEET 220 FOR DETAILS OF PROPOSED SIDEWALK TRAIL WALL, SIDEWALK WALL, AND RETAINING WALLS, WITH STONE VENEER.

Drawing: C:\PROJECTS\ADD12615\145-167 EAST PARKWAY SHEETS.dwg of Nov 04, 2020 - 6:15pm by cadwards
 Layout: Layout136 - X:\B-P\145-167 EAST PARKWAY SHEETS.dwg - X:\B-P\145-167 EAST PARKWAY SHEETS.dwg - X:\B-P\145-167 EAST PARKWAY SHEETS.dwg - X:\B-P\145-167 EAST PARKWAY SHEETS.dwg - X:\B-P\145-167 EAST PARKWAY SHEETS.dwg
 X:\B-P\145-167 EAST PARKWAY SHEETS.dwg - X:\B-P\145-167 EAST PARKWAY SHEETS.dwg - X:\B-P\145-167 EAST PARKWAY SHEETS.dwg - X:\B-P\145-167 EAST PARKWAY SHEETS.dwg - X:\B-P\145-167 EAST PARKWAY SHEETS.dwg

no.	revision	by	date

teague nall and perkins, inc
 5237 N. Riverside Drive, Suite 100
 Fort Worth, Texas 76137
 817.336.5773 ph 817.336.2813 fx
 www.tnppinc.com
 TBPELS: ENGR F-230; SURV 10011600, 10011601, 10194381
 GBPE: PEFO07431; TBAE: BR 2673



scale
 horiz
1"=20'
 vert
 n/a
 date
Sep 2020

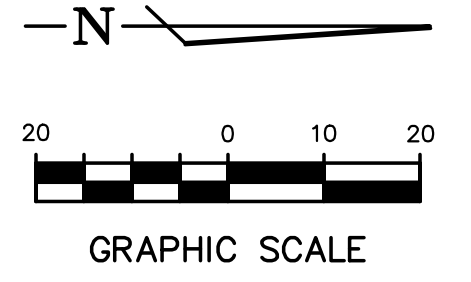
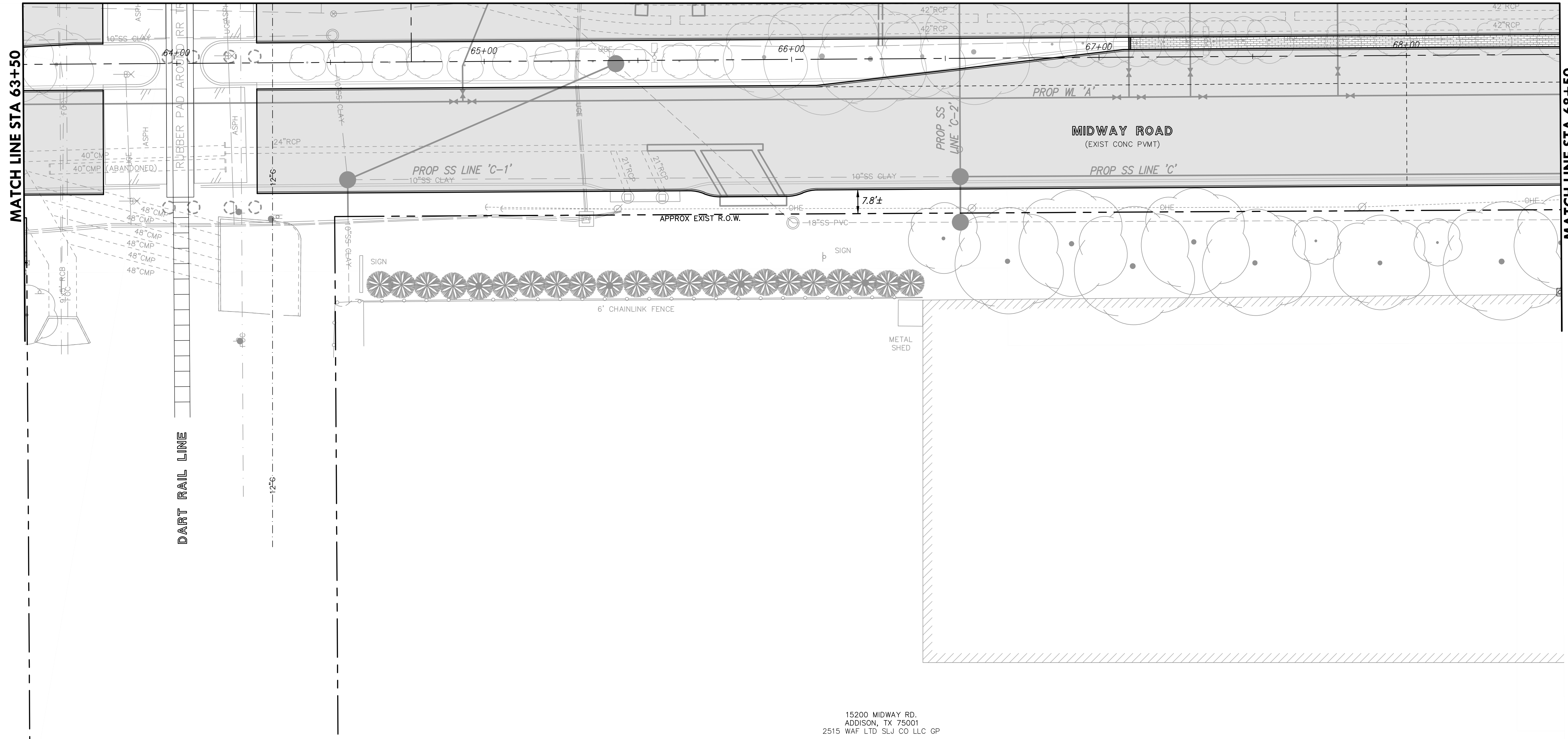


Town of Addison, Texas
 Construction Plans for
Midway Road Revitalization
 East Parkway Plan
 (Sta 45+00 to Sta 49+00)

tnp project
ADD12615
 sheet
159
 of
373

RELEASED FOR CONSTRUCTION

MATCH LINE SHEET 140



15200 MIDWAY RD.
ADDISON, TX 75001
2515 WAF LTD SLU CO LLC GP

- NOTES:
1. ALL DIMENSIONS AND RADII LABELS ARE TO BACK OF CURB, UNLESS OTHERWISE NOTED.
 2. ALL DATA POINTS DRIVEWAYS, RAMPS, AND SIDEWALKS ARE TO FACE OF CURB OR WALL, UNLESS OTHERWISE NOTED.
 3. SEE SHEETS 85-107 FOR ROADWAY AND MEDIAN DESIGN INFORMATION.
 4. SEE SHEETS 173-178 FOR INTERSECTION AND SIDE STREET DESIGN INFORMATION.
 5. SEE SHEETS 17-22 FOR LIMITS OF PAVEMENT, SIDEWALK, RET WALL, TREE, AND OTHER MISCELLANEOUS REMOVALS.
 6. SEE SHEETS 17-22 FOR A DETAILED INVENTORY OF UTILITIES AND APPURTENANCES TO BE RELOCATED BY OTHERS.
 7. SEE SHEET 220 FOR DETAILS OF PROPOSED SIDEWALK TRAIL WALL, SIDEWALK WALL, AND RETAINING WALLS, WITH STONE VENEER.

Drawing: C:\PROJECTS\ADD12615\cadd\sheet\145-167 EAST PARKWAY SHEETS.dwg at Nov 04, 2020 - 6:20pm by cedwards
Layout: Layout(37) - xcd - border.dwg - xcd-base.dwg - xcd-paving-base.dwg - xcd-water-base.dwg - xcd-storm-base.dwg - xcd-stripping.dwg - xcd-seal-w/s.dwg

no.	revision	by	date

teague nall and perkins, inc
5237 N. Riverside Drive, Suite 100
Fort Worth, Texas 76137
817.336.5773 ph 817.336.2813 fx
www.tnpsc.com
TBPELS: ENGR F-230; SURV 10011600, 10011601, 10194381
GBPE: PEF007431; TBAE: BR 2673



scale
horiz
1"=20'
vert
n/a
date
Sep 2020

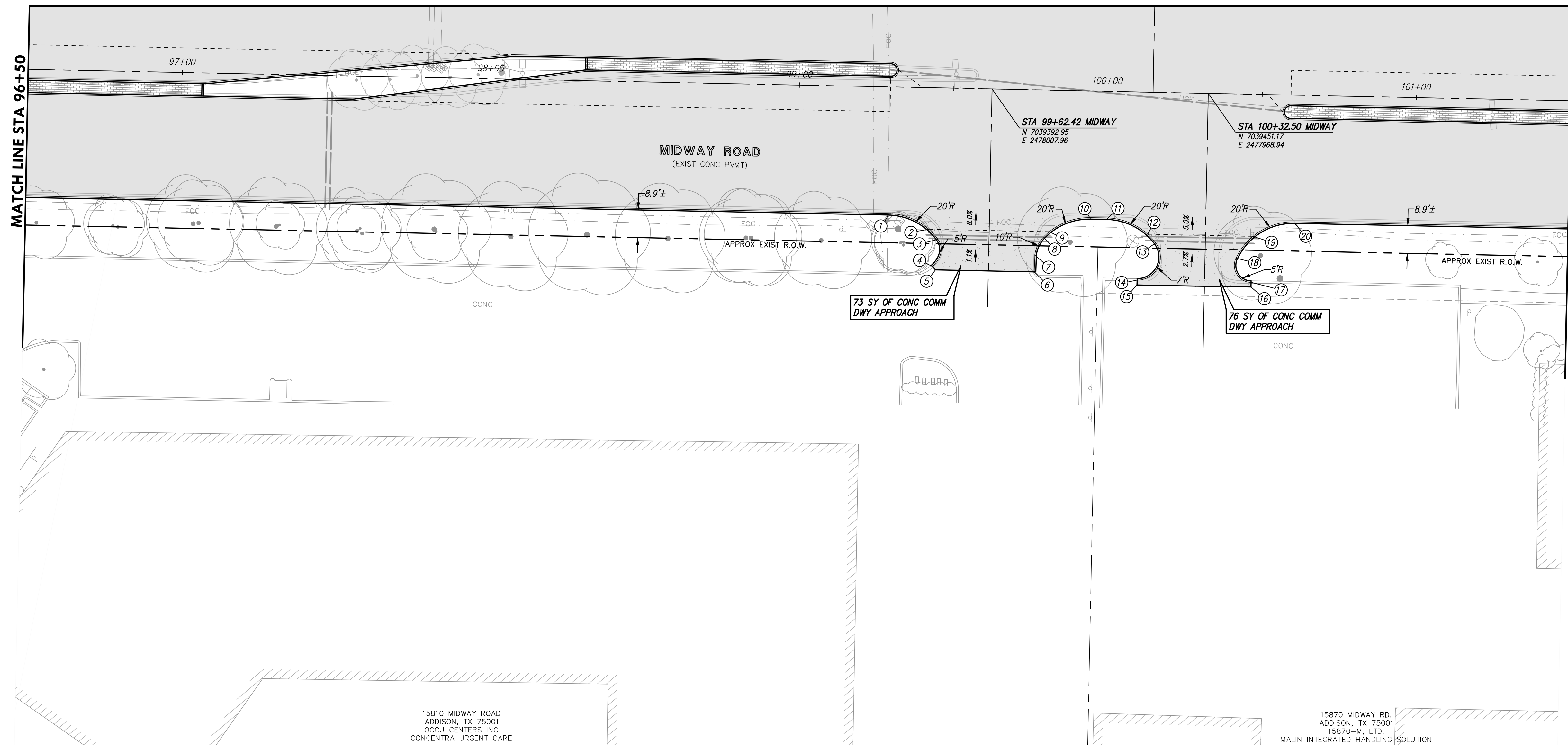


Town of Addison, Texas
Construction Plans for
Midway Road Revitalization
East Parkway Plan
(Sta 63+50 to Sta 68+50)

tnp project
ADD12615
sheet
163
of
373

RELEASED FOR CONSTRUCTION

MATCH LINE SHEET 147



POINT DATA						
#	DESC	STA	OFFSET	ELEV	TC/TP	COMMENT
1	POR	99+29.62	41.50' RT	646.28	T/C	Ø B/C
2	GB	99+42.85	45.84' RT	646.10	T/P	-
3	PCC	99+45.90	49.04' RT	646.13	T/P	-
4	PT	99+44.23	57.85' RT	646.34	T/P	MATCH EXIST
5	PI	99+45.27	58.94' RT	646.36	T/P	MATCH EXIST
6	PI	99+77.30	58.93' RT	645.94	T/P	MATCH EXIST
7	PC	99+77.37	53.54' RT	645.91	T/P	-
8	PCC	99+80.09	47.59' RT	645.87	T/P	-
9	GB	99+81.92	45.84' RT	645.84	T/P	-
10	POR	99+95.16	41.50' RT	645.87	T/C	Ø B/C
11	POR	100+00.39	41.50' RT	645.84	T/C	Ø B/C
12	GB	100+13.81	46.00' RT	645.52	T/P	-
13	PCC	100+16.47	48.77' RT	645.59	T/P	-
14	PT	100+10.68	60.93' RT	646.06	T/P	MATCH EXIST
15	PI	100+10.68	62.50' RT	646.06	T/P	MATCH EXIST
16	PI	100+47.61	62.40' RT	645.73	T/P	MATCH EXIST
17	PC	100+47.60	60.90' RT	645.72	T/P	MATCH EXIST
18	PCC	100+42.58	53.16' RT	645.67	T/P	-
19	GB	100+47.89	46.00' RT	645.35	T/P	-
20	POR	100+61.31	41.50' RT	645.53	T/C	Ø B/C

- NOTES:
- ALL DIMENSIONS AND RADII LABELS ARE TO BACK OF CURB, UNLESS OTHERWISE NOTED.
 - ALL DATA POINTS DRIVEWAYS, RAMPS, AND SIDEWALKS ARE TO FACE OF CURB OR WALL, UNLESS OTHERWISE NOTED.
 - SEE SHEETS 85-107 FOR ROADWAY AND MEDIAN DESIGN INFORMATION.
 - SEE SHEETS 173-178 FOR INTERSECTION AND SIDE STREET DESIGN INFORMATION.
 - SEE SHEETS 17-22 FOR LIMITS OF PAVEMENT, SIDEWALK, RET WALL, TREE, AND OTHER MISCELLANEOUS REMOVALS.
 - SEE SHEETS 17-22 FOR A DETAILED INVENTORY OF UTILITIES AND APPURTENANCES TO BE RELOCATED BY OTHERS.
 - SEE SHEET 220 FOR DETAILS OF PROPOSED SIDEWALK TRAIL WALL, SIDEWALK WALL, AND RETAINING WALLS, WITH STONE VENEER.

Drawing: C:\PROJECTS\ADD12615\cadd\sheet\145-167 EAST PARKWAY SHEETS.dwg at Nov 04, 2020 - 6:28pm by celward
 Layout: Layout1.dwg - XCD-BASE.dwg - XCD-PAVING-BASE.dwg - XCD-WATER-BASE.dwg - XCD-STORM-BASE.dwg - XCD-STRIPING.dwg - XCD-SEAL-WHIS.dwg
 User: celward
 Title: 145-167 EAST PARKWAY SHEETS.dwg

no.	revision	by	date

teague nall and perkins, inc
 5237 N. Riverside Drive, Suite 100
 Fort Worth, Texas 76137
 817.336.5773 ph 817.336.2813 fx
 www.tnpsc.com
 TBPELS: ENGR F-230; SURV 10011600, 10011601, 10194381
 GBPE: PEF007431; TBAE: BR 2673



scale
horiz
1"=20'
vert
n/a
date
Sep 2020



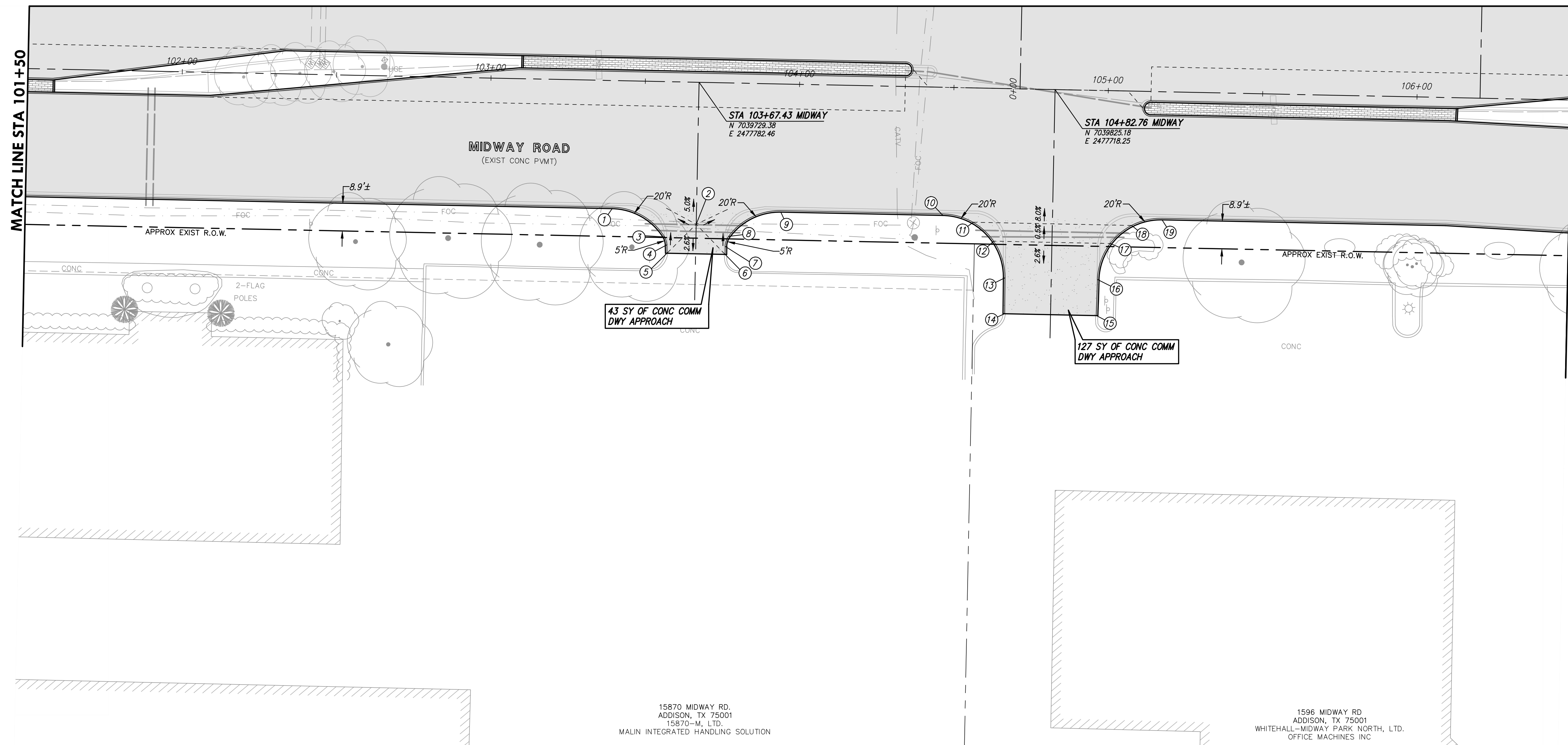
Professional Engineer
 Chris A. Edwards
 118947
 Date: 9/29/2020

Town of Addison, Texas
 Construction Plans for
Midway Road Revitalization
 East Parkway Plan
 (Sta 96+50 to Sta 101+50)

tnp project
ADD12615
sheet
170
of
373

RELEASED FOR CONSTRUCTION

MATCH LINE SHEET 148



15870 MIDWAY RD.
ADDISON, TX 75001
15870-M, LTD.
MALIN INTEGRATED HANDLING SOLUTION

1596 MIDWAY RD.
ADDISON, TX 75001
WHITEHALL-MIDWAY PARK NORTH, LTD.
OFFICE MACHINES INC

POINT DATA						
#	DESC	STA	OFFSET	ELEV	TC/TP	COMMENT
1	PCR	103+40.11	41.50' RT	644.14	T/C	● B/C
2	HP	103+67.43	46.00' RT	643.75	T/P	-
3	PCC	103+57.38	50.32' RT	643.66	T/P	-
4	PT	103+58.04	52.86' RT	643.69	T/P	-
5	PI	103+58.16	55.55' RT	643.71	T/P	MATCH EXIST
6	PI	103+77.01	55.58' RT	643.71	T/P	MATCH EXIST
7	PC	103+76.97	52.98' RT	643.67	T/P	-
8	PCC	103+77.96	49.74' RT	643.61	T/P	-
9	PCR	103+94.75	41.50' RT	643.87	T/C	● B/C
10	PCR	104+47.27	41.50' RT	643.61	T/C	● B/C
11	QB	104+57.09	43.51' RT	643.26	T/P	-
12	QB	104+63.90	49.51' RT	643.26	T/P	-
13	PCR	104+67.77	61.30' RT	643.07	T/P	-
14	PI	104+67.88	72.93' RT	642.91	T/P	MATCH EXIST
15	PI	104+97.61	72.92' RT	641.82	T/P	MATCH EXIST
16	PCR	104+97.75	61.26' RT	642.45	T/P	-
17	QB	105+01.62	49.51' RT	643.06	T/P	-
18	QB	105+08.43	43.51' RT	643.00	T/P	-
19	PCR	105+18.25	41.50' RT	643.25	T/C	● B/C

- NOTES:
1. ALL DIMENSIONS AND RADII LABELS ARE TO BACK OF CURB, UNLESS OTHERWISE NOTED.
 2. ALL DATA POINTS DRIVEWAYS, RAMPS, AND SIDEWALKS ARE TO FACE OF CURB OR WALL, UNLESS OTHERWISE NOTED.
 3. SEE SHEETS 85-107 FOR ROADWAY AND MEDIAN DESIGN INFORMATION.
 4. SEE SHEETS 173-178 FOR INTERSECTION AND SIDE STREET DESIGN INFORMATION.
 5. SEE SHEETS 17-22 FOR LIMITS OF PAVEMENT, SIDEWALK, RET WALL, TREE, AND OTHER MISCELLANEOUS REMOVALS.
 6. SEE SHEETS 17-22 FOR A DETAILED INVENTORY OF UTILITIES AND APPURTENANCES TO BE RELOCATED BY OTHERS.
 7. SEE SHEET 220 FOR DETAILS OF PROPOSED SIDEWALK TRAIL WALL, SIDEWALK WALL, AND RETAINING WALLS, WITH STONE VENEER.

Drawing: C:\PROJECTS\ADD12615\148-167 EAST PARKWAY SHEETS.dwg at Nov 04, 2020 - 6:29pm by cedwards
 Layout: Layout1.dwg - XCD-BASE.DWG - XCD-PAVING-BASE.DWG - XCD-WATER-BASE.DWG - XCD-STORM-BASE.DWG - XCD-STRIPING.DWG - XCD-SEAL-PAVING.DWG - XCD-STRIPING.DWG - XCD-SEAL-PAVING.DWG - XCD-STRIPING.DWG - XCD-SEAL-PAVING.DWG

no.	revision	by	date

teague nall and perkins, inc
 5237 N. Riverside Drive, Suite 100
 Fort Worth, Texas 76137
 817.336.5773 ph 817.336.2813 fx
 www.tnpsc.com
 TBPELS: ENGR F-230; SURV 10011600, 10011601, 10194381
 GBPE: PEF007431; TBAE: BR 2673



scale
horiz
1"=20'
vert
n/a
date
Sep 2020



STATE OF TEXAS
 LICENSED PROFESSIONAL ENGINEER
 CHRIS A. EDWARDS
 118947
 Chris A. Edwards, P.E.
 Date: 9/29/2020

Town of Addison, Texas
 Construction Plans for
Midway Road Revitalization
 East Parkway Plan
 (Sta 101+50 to Sta 106+50)

tnp project
ADD12615
sheet
171
of
373

RELEASED FOR CONSTRUCTION

