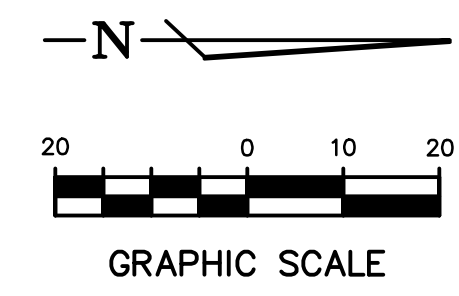
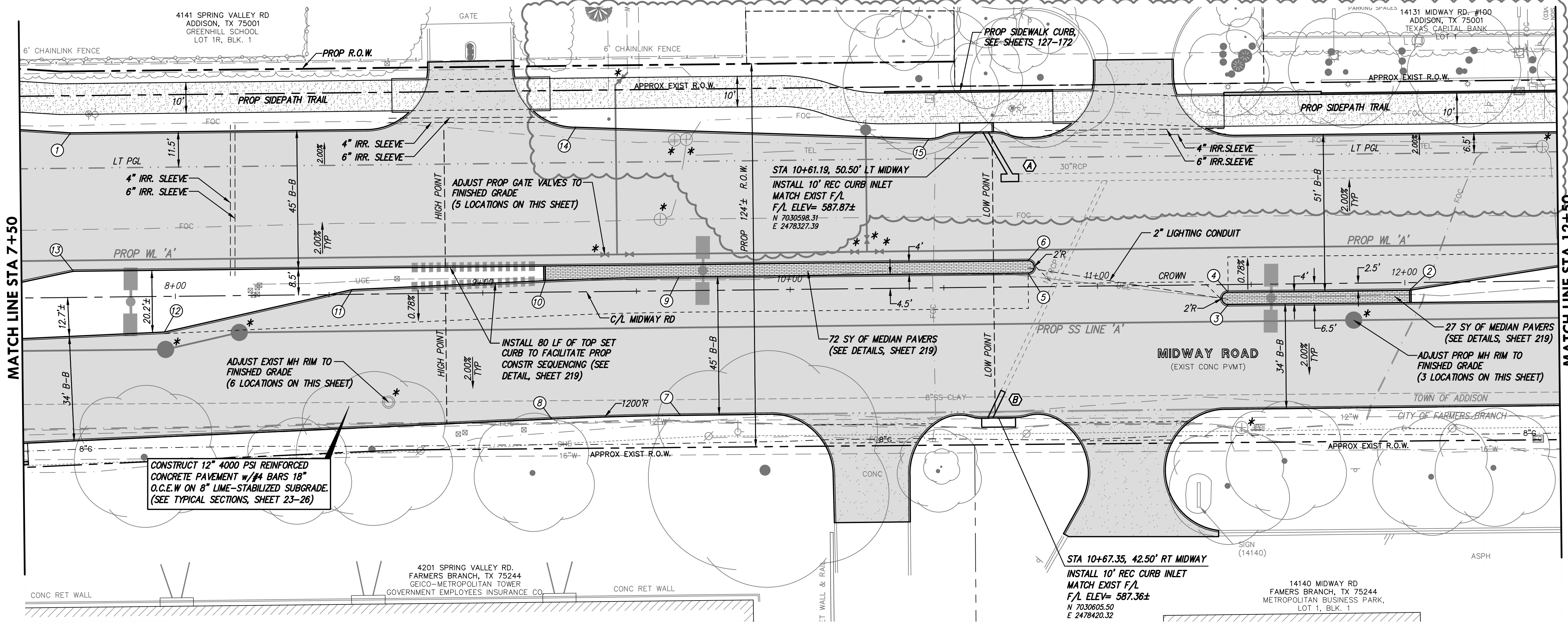


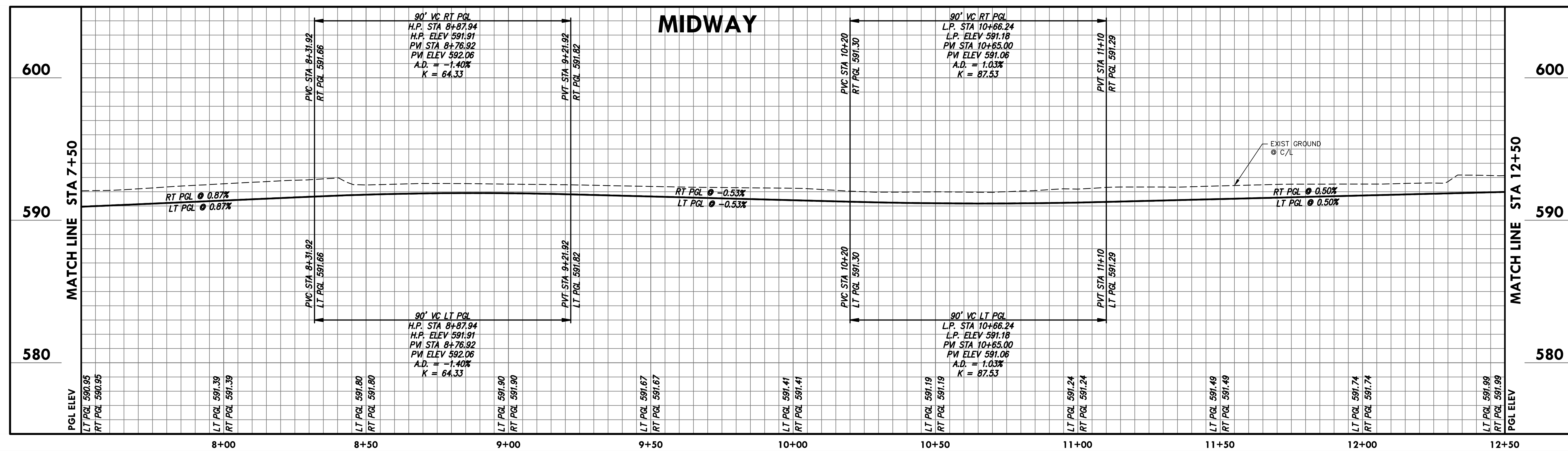
Drawing: C:\PROJECTS\ADD12615\add12615.dwg (Sheet) P&P SHEETS.dwg at Aug 06, 2021 - 2:50pm by jrgroves
 Layout: Layout(2) - Area: Add-Boarding - XID=BASE.dwg - XID=PAVING-BASE.dwg - XID=STRIPING.DWG - XID=SEWER-BASE.dwg - XID=WATER-BASE.dwg - XID=TRAFFIC.dwg - XID=UTIL.dwg - XID=HIS.dwg
 Drawing: C:\PROJECTS\ADD12615\add12615.dwg (Sheet) P&P SHEETS.dwg at Aug 06, 2021 - 2:50pm by jrgroves
 Layout: Layout(2) - Area: Add-Boarding - XID=BASE.dwg - XID=PAVING-BASE.dwg - XID=STRIPING.DWG - XID=SEWER-BASE.dwg - XID=WATER-BASE.dwg - XID=TRAFFIC.dwg - XID=UTIL.dwg - XID=HIS.dwg



POINT DATA						
#	DESC	STA	OFFSET	ELEV	TC/TP	COMMENT
1	PI	7+66.52	53.50' LT	591.38	1/C	-
2	PI	12+01.47	2.50' RT	592.99	1/C	-
3	PDR	11+42.47	6.50' RT	592.61	1/C	-
4	PDR	11+42.47	2.50' RT	592.70	1/C	-
5	PDR	10+77.49	4.50' LT	592.43	1/C	-
6	PDR	10+77.47	8.50' LT	592.35	1/C	-
7	PT	9+63.85	40.50' RT	592.10	1/C	-
8	PC	9+21.97	41.23' RT	592.32	1/C	-
9	PI	9+63.87	4.50' LT	592.84	1/C	-
10	PI	9+20.40	3.74' LT	593.07	1/C	-
11	PI	8+57.56	1.55' LT	593.08	1/C	-
12	PI	7+96.32	11.60' RT	592.51	1/C	-
13	PI	7+66.93	8.50' LT	592.26	1/C	-
14	PI	9+30.88	53.50' LT	592.05	1/C	-
15	PI	10+45.69	48.50' LT	591.58	1/C	-

- NOTE:**
* FEATURES TO BE ADJUSTED TO FINISHED GRADE.
- NOTES:**
- ALL PAVEMENT DIMENSIONS AND DATA POINTS ARE TO BACK OF CURB, UNLESS OTHERWISE NOTED.
 - PROPOSED GRADE LINE (PGL) ELEVATIONS ARE AT TOP OF PAVEMENT. SEE TYPICAL SECTIONS, SHEETS 23-26, FOR PGL LOCATIONS.
 - SEE SHEETS 127-172 FOR PARKWAY AND DRIVEWAY DESIGN INFORMATION.
 - SEE SHEETS 173-178 FOR INTERSECTION AND SIDE STREET DESIGN INFORMATION.
 - FOR PLAN CLARITY, EXISTING UTILITIES BEING ABANDONED AND/OR REMOVED AS PART OF THIS PROJECT ARE NOT SHOWN ON PAVING PLANS. SEE UTILITY PLANS FOR REMOVALS THAT ARE TO OCCUR DURING PAVING OPERATION.
 - EXISTING FEATURES TO BE REMOVED ARE NOT SHOWN ON THESE SHEETS FOR CLARITY. (SEE PARKWAY PLAN SHEETS 127-172)

- (A) STA 10+61.19, 50.50' LT MIDWAY
INSTALL:
1-30"x18" 60" WYE
1-30" PLUG
16 LF OF 18" RCP LATERAL
CONNECT TO EXIST 30" RCP
WITH CONC COLLAR
N 7030598.31
E 2478327.39
- (B) STA 10+67.35, 42.50' RT MIDWAY
INSTALL:
10 LF OF 18" RCP LATERAL
CONNECT TO EXIST 18" RCP
WITH CONC COLLAR
N 7030605.50
E 2478420.32



no.	revision	by	date
	REISSUED FOR GREENHILL ROW NEGOTIATION	CAE	07/09/21

teague nall and perkins, inc
 5237 N. Riverside Drive, Suite 100
 Fort Worth, Texas 76137
 817.336.5773 ph 817.336.2813 fx
 www.tnpsc.com
 TBPELS: ENGR F-230; SURV 10011600, 10011601, 10194381
 GBPE: PEF007431; TBAE: BR 2673



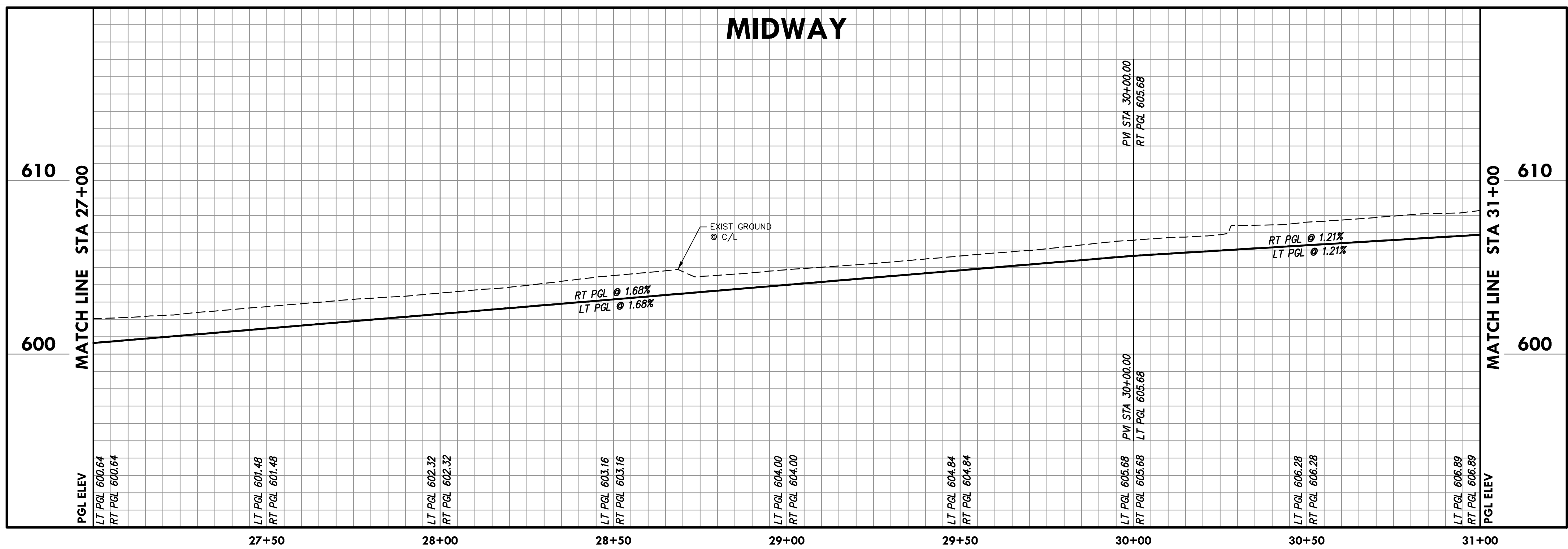
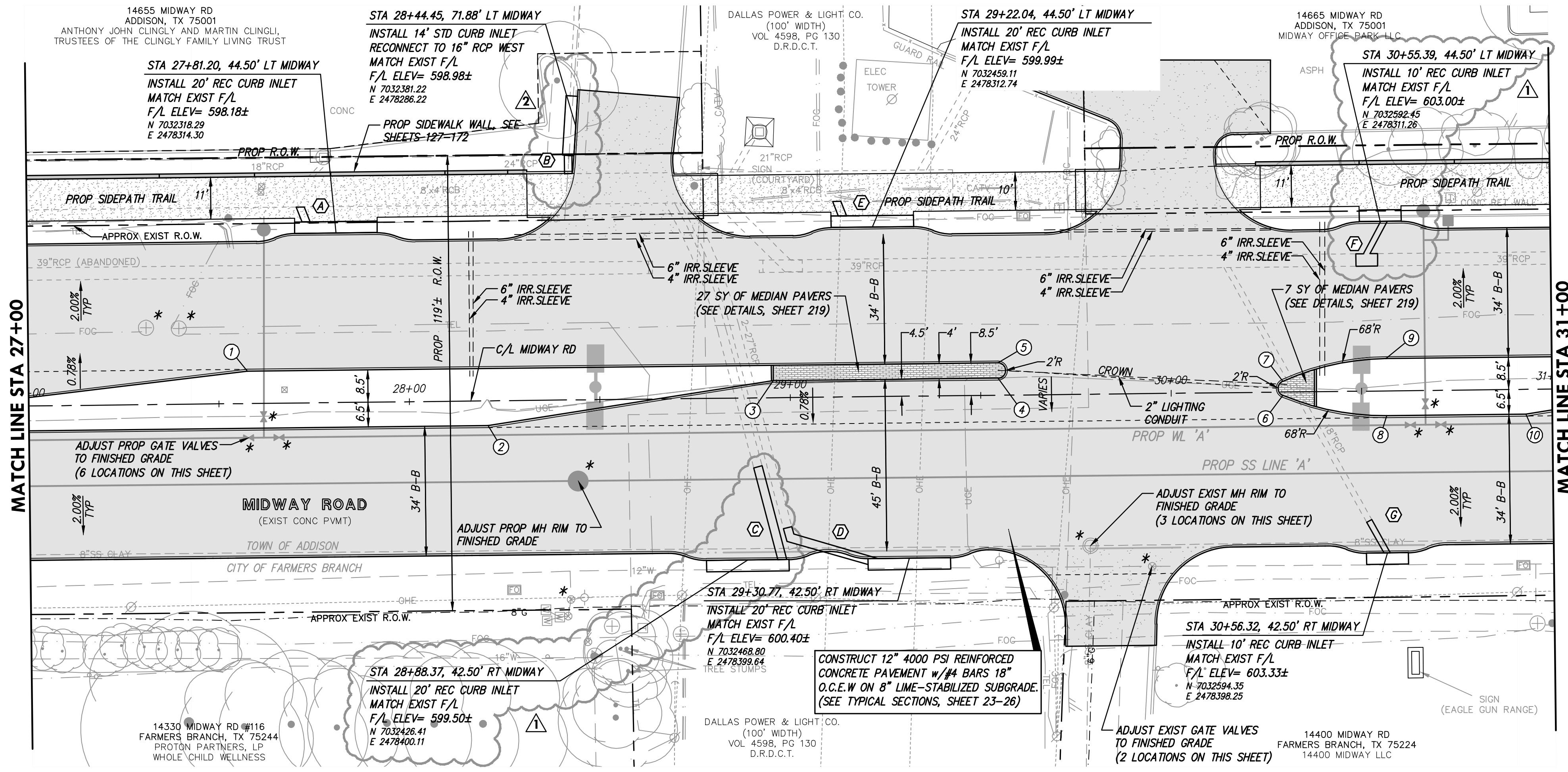
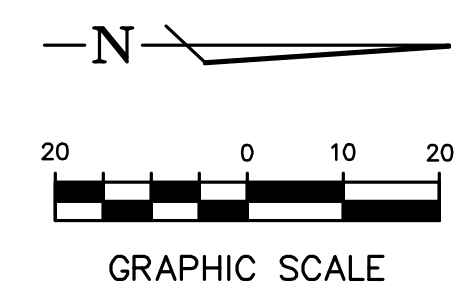
scale
horiz
1"=20'
vert
1"=4'
date
Aug 2021



Town of Addison, Texas
 Construction Plans for
Midway Road Revitalization
 Paving Plan & Profile
 (Sta 7+50 to Sta 12+50)

tnp project
ADD12615
sheet
86
of
373

RELEASED FOR CONSTRUCTION



- (A) STA 27+81.20, 44.50' LT MIDWAY
INSTALL:
4 LF OF 24" RCP LATERAL
CONNECT TO EXIST 8'x4' RCB
N 7032381.22
E 2478314.30
- (B) STA 28+44.59, 73.78' LT MIDWAY
INSTALL:
7 LF OF 24" RCP LATERAL
CONNECT TO EXIST 8'x4' RCB
N 7032381.34
E 2478284.32
- (C) STA 28+88.37, 42.50' RT MIDWAY
INSTALL:
25 LF OF 27" RCP LATERAL
CONNECT TO EXIST 27" RCP
WITH CONC COLLAR
N 7032426.41
E 2478400.11
- (D) STA 29+30.77, 42.50' RT MIDWAY
INSTALL:
1-27" 60" BEND
23 LF OF 27" RCP LATERAL
CONNECT TO EXIST 27" RCP
WITH CONC COLLAR
N 7032468.80
E 2478399.64
- (E) STA 29+22.04, 44.50' LT MIDWAY
INSTALL:
4 LF OF 24" RCP LATERAL
CONNECT TO EXIST 8'x4' RCB
N 7032459.11
E 2478312.74
- (F) STA 30+55.39, 44.50' LT MIDWAY
INSTALL:
1-39"x18" 60" WYE
12 LF OF 18" RCP LATERAL
CONNECT TO EXIST 39" RCP
WITH CONC COLLAR
N 7032392.45
E 2478311.28
- (G) STA 30+56.32, 42.50' RT MIDWAY
INSTALL:
8 LF OF 18" RCP LATERAL
CONNECT TO EXIST 18" RCP
WITH CONC COLLAR
N 7032594.35
E 2478398.25

- NOTE:
* FEATURES TO BE ADJUSTED TO FINISHED GRADE.
- NOTES:
1. ALL PAVEMENT DIMENSIONS AND DATA POINTS ARE TO BACK OF CURB, UNLESS OTHERWISE NOTED.
2. PROPOSED GRADE LINE (PGL) ELEVATIONS ARE AT TOP OF PAVEMENT. SEE TYPICAL SECTIONS, SHEETS 23-26, FOR PGL LOCATIONS.
3. SEE SHEETS 127-172 FOR PARKWAY AND DRIVEWAY DESIGN INFORMATION.
4. SEE SHEETS 173-178 FOR INTERSECTION AND SIDE STREET DESIGN INFORMATION.
5. FOR PLAN CLARITY, EXISTING UTILITIES BEING ABANDONED AND/OR REMOVED AS PART OF THIS PROJECT ARE NOT SHOWN ON THESE PLANS. SEE UTILITY PLANS FOR REMOVALS THAT ARE TO OCCUR DURING PAVING OPERATION.
6. EXISTING FEATURES TO BE REMOVED ARE NOT SHOWN ON THESE SHEETS FOR CLARITY.(SEE PARKWAY PLAN SHEETS 127-172)

POINT DATA						
#	DESC	STA	OFFSET	ELEV	IC/TP	COMMENT
1	PI	27+57.58	8.50' LT	602.77	T/C	-
2	PI	28+20.60	6.50' RT	603.82	T/C	-
3	PI	28+95.60	4.50' LT	605.17	T/C	-
4	PI	29+54.60	4.50' LT	606.16	T/C	-
5	PC	29+54.60	8.50' LT	606.07	T/C	-
6	PCC	30+29.34	0.83' RT	607.19	T/C	-
7	PCC	30+29.34	2.83' LT	607.19	T/C	-
8	PI	30+98.51	6.50' RT	607.52	T/C	-
9	PC	30+56.51	8.50' LT	607.52	T/C	-
10	PI	30+81.06	6.50' RT	607.96	T/C	-

no.	revision	by	date
1	SHEET REISSUED FOR SUBMITTAL #073.1	CAE	06/29/21
2	SHEET REISSUED FOR RFI #021	CAE	06/29/21

teague nall and perkins, inc
 5237 N. Riverside Drive, Suite 100
 Fort Worth, Texas 76137
 817.336.5773 ph 817.336.2813 fx
 www.tnpsc.com
 TBPELS: ENGR F-230; SURV 10011600, 10011601, 10194381
 GBPE: PEF007431; TBAE: BR 2673



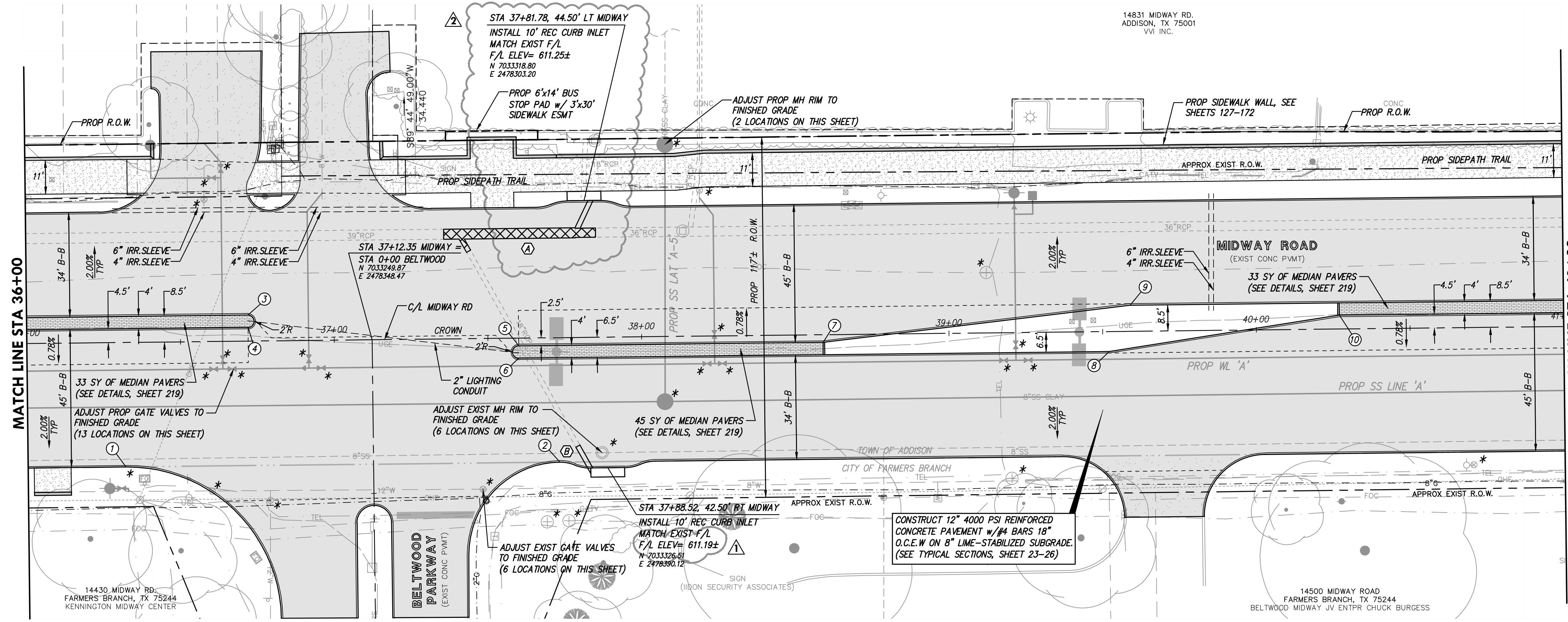
scale
 horiz
 1"=20'
 vert
 1"=4'
 date
 Sep 2020



Town of Addison, Texas
 Construction Plans for
Midway Road Revitalization
 Paving Plan & Profile
 (Sta 27+00 to Sta 31+00)

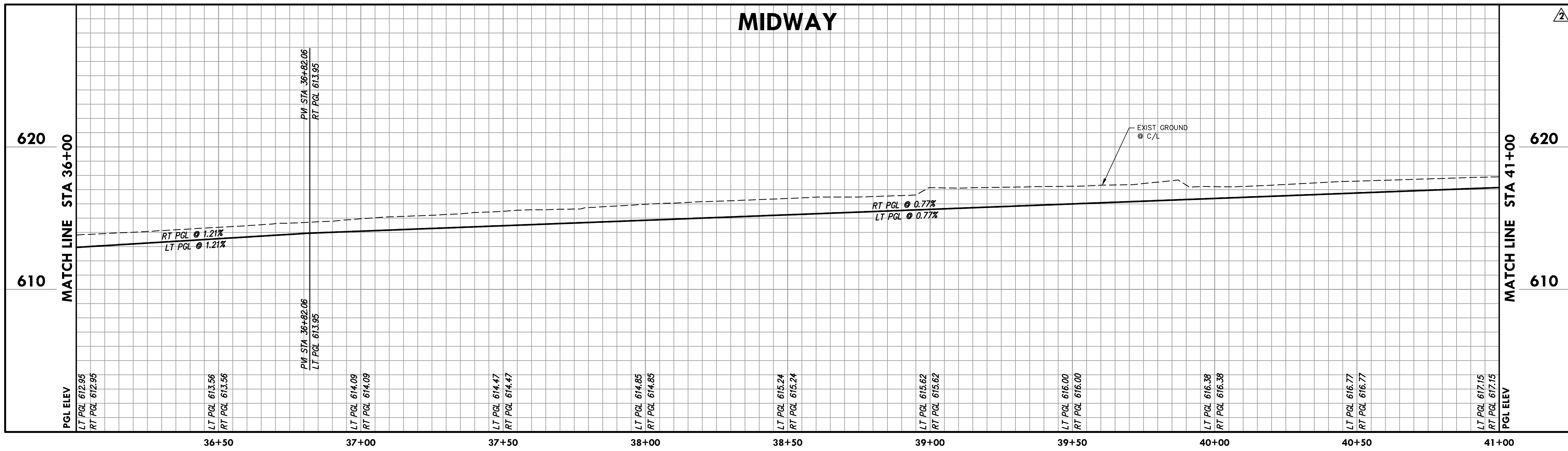
tnp project
 ADD12615
 sheet
90
 of
373

Drawing: O:\PROJECTS\ADD12615\cadd\sheet\00-102 PAVING P&P SHEETS.dwg at Jun 30, 2021 8:56am by towntruf
 Copy: Layout(3) Area: 00-warding.dwg - XCD-PAVING-BASELINE.dwg - XCD-PAVING-BASELINE.dwg - XCD-SEWER-BASE.dwg - XCD-WATER-BASE.dwg - XCD-STRIPING.dwg - XCD-Traffic.dwg - seal-JLM.dwg - SEAL-HHS.dwg



- NOTE:**
* FEATURES TO BE ADJUSTED TO FINISHED GRADE.
- NOTES:**
- ALL PAVEMENT DIMENSIONS AND DATA POINTS ARE TO BACK OF CURB, UNLESS OTHERWISE NOTED.
 - PROPOSED GRADE LINE (PGL) ELEVATIONS ARE AT TOP OF PAVEMENT. SEE TYPICAL SECTIONS, SHEETS 23-26, FOR PGL LOCATIONS.
 - SEE SHEETS 127-172 FOR PARKWAY AND DRIVEWAY DESIGN INFORMATION.
 - SEE SHEETS 173-178 FOR INTERSECTION AND SIDE STREET DESIGN INFORMATION.
 - FOR PLAN CLARITY, EXISTING UTILITIES BEING ABANDONED AND/OR REMOVED AS PART OF THIS PROJECT ARE NOT SHOWN ON PAVING PLANS. SEE UTILITY PLANS FOR REMOVALS THAT ARE TO OCCUR DURING PAVING OPERATION.
 - EXISTING FEATURES TO BE REMOVED ARE NOT SHOWN ON THESE SHEETS FOR CLARITY. (SEE PARKWAY PLAN SHEETS 127-172)

POINT DATA						
#	DESC	STA	OFFSET	ELEV	TC/TYP	COMMENT
1	PCR	36+31.84	40.50' RT	613.57	T/C	-
2	PCR	37+23.02	40.50' RT	614.99	T/C	-
3	PC	36+72.03	8.50' LT	614.99	T/C	-
4	PT	36+72.03	4.50' LT	615.07	T/C	-
5	PC	37+60.03	2.50' RT	615.79	T/C	-
6	PT	37+60.03	6.50' RT	615.71	T/C	-
7	PI	38+59.03	2.50' RT	616.55	T/C	-
8	PI	39+52.05	6.50' RT	617.18	T/C	-
9	PI	39+59.03	8.50' LT	617.23	T/C	-
10	PI	40+27.05	4.50' LT	617.84	T/C	-



- (A)** STA 37+81.78, 44.50' LT MIDWAY
INSTALL:
2-39"x18" 60" WYE
25 LF OF 18" RCP LATERALS
RECONSTRUCT 43 LF OF 39" RCP
AND 7 LF OF 36" RCP
(APPROX. STA 37+36 TO STA 37+85)
CONNECT TO EXIST 39" AND 36" RCP
WITH CONC COLLARS
N 7033318.80
E 2478303.20
- (B)** STA 37+88.52, 42.50' RT MIDWAY
INSTALL:
10 LF OF 18" RCP LATERAL
CONNECT TO EXIST 18" RCP
WITH CONC COLLAR
N 7033326.51
E 2478390.12

no.	revision	by	date
1	SHEET REISSUED FOR RFI #021	CAE	06/29/21
2	SHEET REISSUED FOR RFI #4	CAE	02/08/21

teague nall and perkins, inc
 5237 N. Riverside Drive, Suite 100
 Fort Worth, Texas 76137
 817.336.5773 ph 817.336.2813 fx
 www.tnpsc.com
 TBPELS: ENGR F-230; SURV 10011600, 10011601, 10194381
 GBPE: PEF007431; TBAE: BR 2673



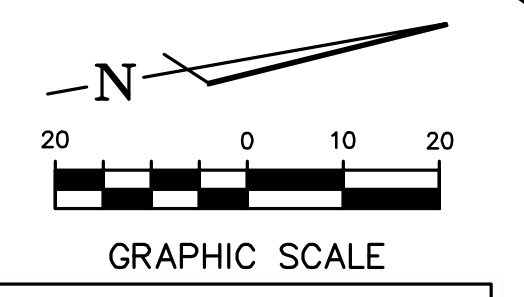
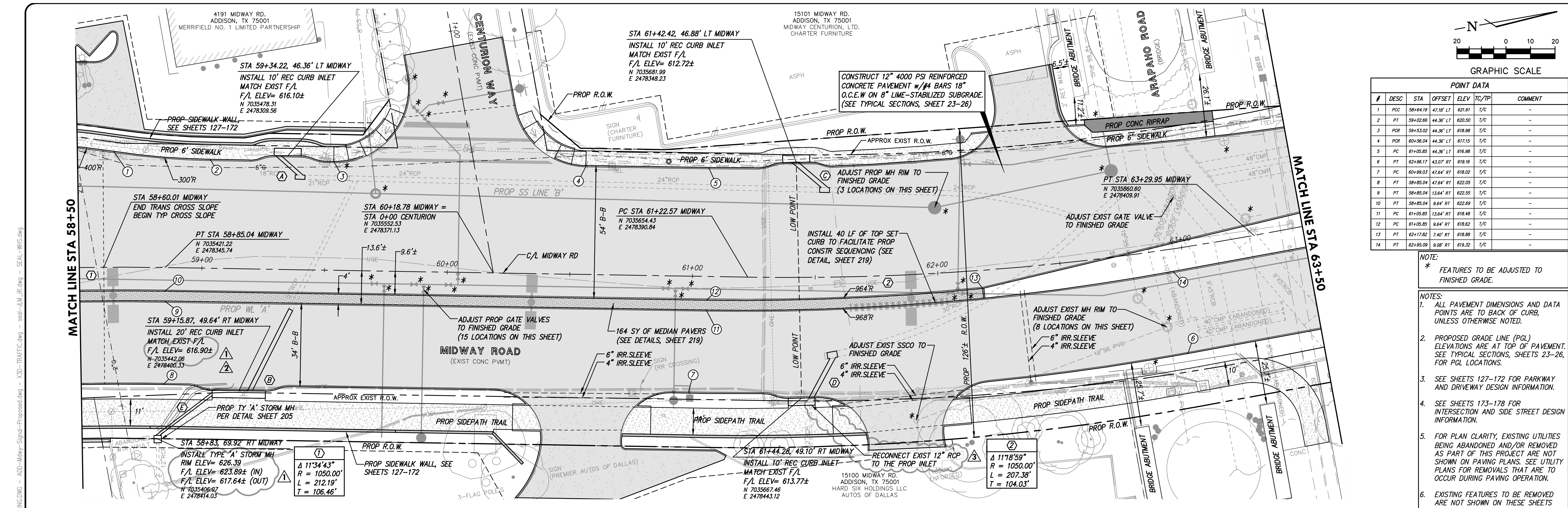
scale
horiz 1"=20'
vert 1"=4'
date
Sep 2020



Town of Addison, Texas
 Construction Plans for
Midway Road Revitalization
 Paving Plan & Profile
 (Sta 36+00 to Sta 41+00)

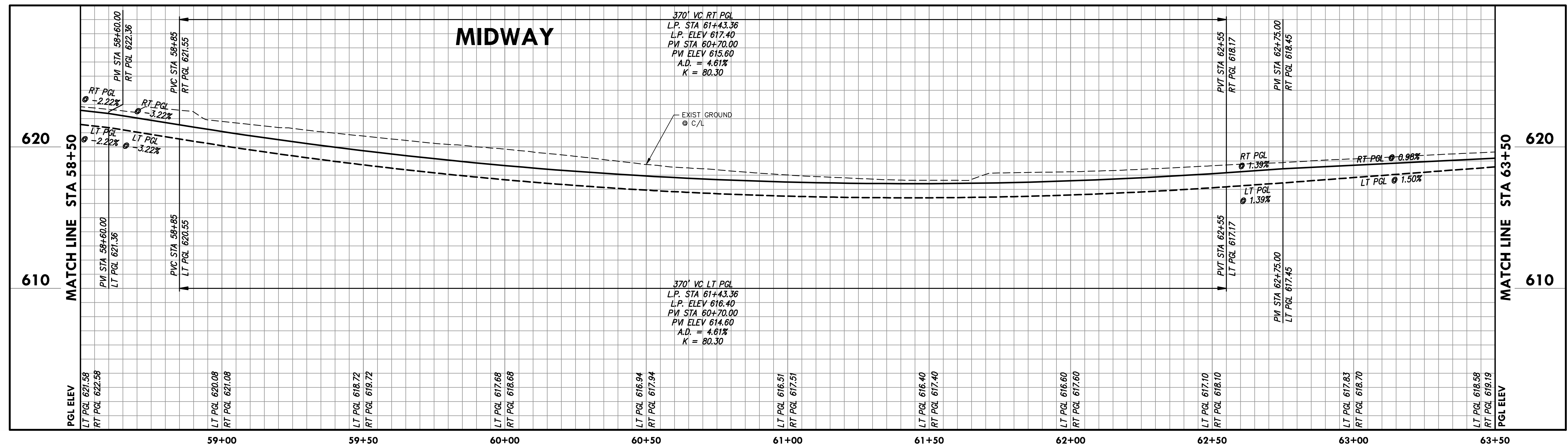
tnp project
ADD12615
sheet
92
of
373

RELEASED FOR CONSTRUCTION



POINT DATA						
#	DESC	STA	OFFSET	ELEV	TC/TP	COMMENT
1	POC	58+64.19	47.18' LT	621.61	T/C	-
2	PT	59+02.66	44.36' LT	620.50	T/C	-
3	PCR	59+53.02	44.36' LT	618.98	T/C	-
4	PCR	60+96.04	44.36' LT	617.15	T/C	-
5	PT	61+05.85	44.36' LT	616.98	T/C	-
6	PT	62+96.17	43.07' RT	618.16	T/C	-
7	PC	60+99.03	47.64' RT	618.02	T/C	-
8	PT	58+85.04	47.64' RT	622.05	T/C	-
9	PT	58+85.04	13.64' RT	622.55	T/C	-
10	PT	58+85.04	9.64' RT	622.89	T/C	-
11	PC	61+05.85	13.64' RT	618.48	T/C	-
12	PC	61+05.85	9.64' RT	618.82	T/C	-
13	PT	62+17.62	7.40' RT	618.88	T/C	-
14	PT	62+95.09	9.08' RT	619.32	T/C	-

- NOTES:
- * FEATURES TO BE ADJUSTED TO FINISHED GRADE.
- NOTES:
- ALL PAVEMENT DIMENSIONS AND DATA POINTS ARE TO BACK OF CURB, UNLESS OTHERWISE NOTED.
 - PROPOSED GRADE LINE (PGL) ELEVATIONS ARE AT TOP OF PAVEMENT. SEE TYPICAL SECTIONS, SHEETS 23-26, FOR PGL LOCATIONS.
 - SEE SHEETS 127-172 FOR PARKWAY AND DRIVEWAY DESIGN INFORMATION.
 - SEE SHEETS 173-178 FOR INTERSECTION AND SIDE STREET DESIGN INFORMATION.
 - FOR PLAN CLARITY, EXISTING UTILITIES BEING ABANDONED AND/OR REMOVED AS PART OF THIS PROJECT ARE NOT SHOWN ON PAVING PLANS. SEE UTILITY PLANS FOR REMOVALS THAT ARE TO OCCUR DURING PAVING OPERATION.
 - EXISTING FEATURES TO BE REMOVED ARE NOT SHOWN ON THESE SHEETS FOR CLARITY. (SEE PARKWAY PLAN SHEETS 127-172)



- (A) STA 59+34.22, 46.36' LT MIDWAY
INSTALL:
1-21"x18" 60" WYE
1-21" PLUG
12 LF OF 18" RCP LATERAL CONNECT TO EXIST 21" RCP WITH CONC COLLAR
N 7035478.31
E 2478309.56
- (B) STA 59+15.87, 49.64' RT MIDWAY
INSTALL:
37 LF OF 21" RCP LATERAL CONNECT TO EXIST 21" RCP WITH CONC COLLAR
N 7035442.06
E 2478400.33
- (C) STA 61+42.42, 46.88' LT MIDWAY
INSTALL:
1-24"x21" 60" WYE
16 LF OF 21" RCP LATERAL CONNECT TO EXIST 24" RCP WITH CONC COLLARS
N 7035681.99
E 2478348.23
- (D) STA 61+44.28, 49.10' RT MIDWAY
INSTALL:
1-30"x21" 60" WYE
1-30" PLUG
19 LF OF 21" RCP LATERAL CONNECT TO EXIST 30" RCP WITH CONC COLLAR
N 7035667.46
E 2478443.12
- (E) STA 58+82.99, 69.85' RT MIDWAY
INSTALL:
28 LF OF 12" RCP LATERAL CONNECT EXIST 12" RCP TO PROP TYPE 'A' STORM SEWER MH
N 7035406.09
E 2478413.97

REVISION	DATE	BY
1	06/29/21	CAE
2	06/29/21	CAE
3	02/08/21	CAE

teague nall and perkins, inc
 5237 N. Riverside Drive, Suite 100
 Fort Worth, Texas 76137
 817.336.5773 ph 817.336.2813 fx
 www.tnpsc.com
 TBPELS: ENGR F-230; SURV 10011600, 10011601, 10194381
 GBPE: PEF007431; TBAE: BR 2673



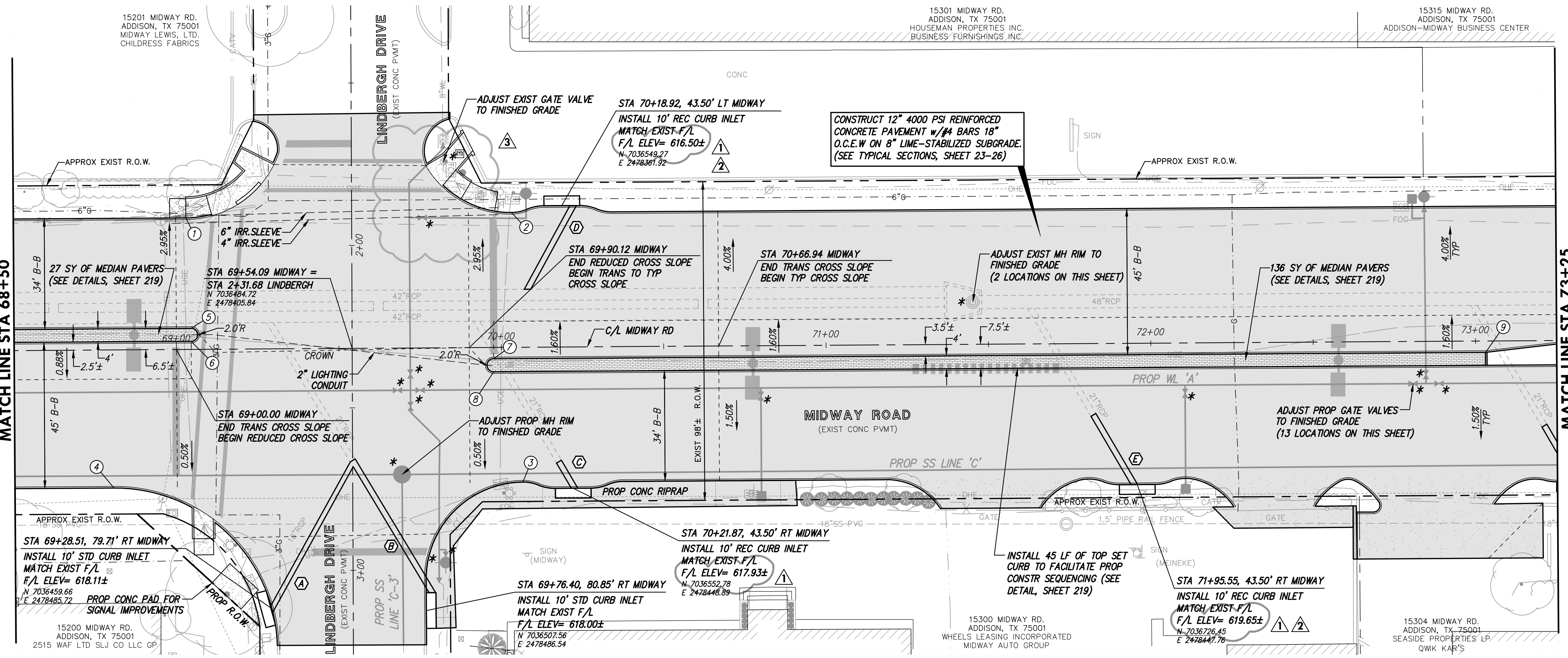
scale
 horiz
 1"=20'
 vert
 1"=4'
 date
 Sep 2020



Professional Engineer
 CHRIS A. EDWARDS
 118947
 LICENSED PROFESSIONAL ENGINEER
 Date: 6/29/2021

Town of Addison, Texas
 Construction Plans for
Midway Road Revitalization
 Paving Plan & Profile
 (Sta 58+50 to Sta 63+50)

tnp project
 ADD12615
 sheet
97
 of
373

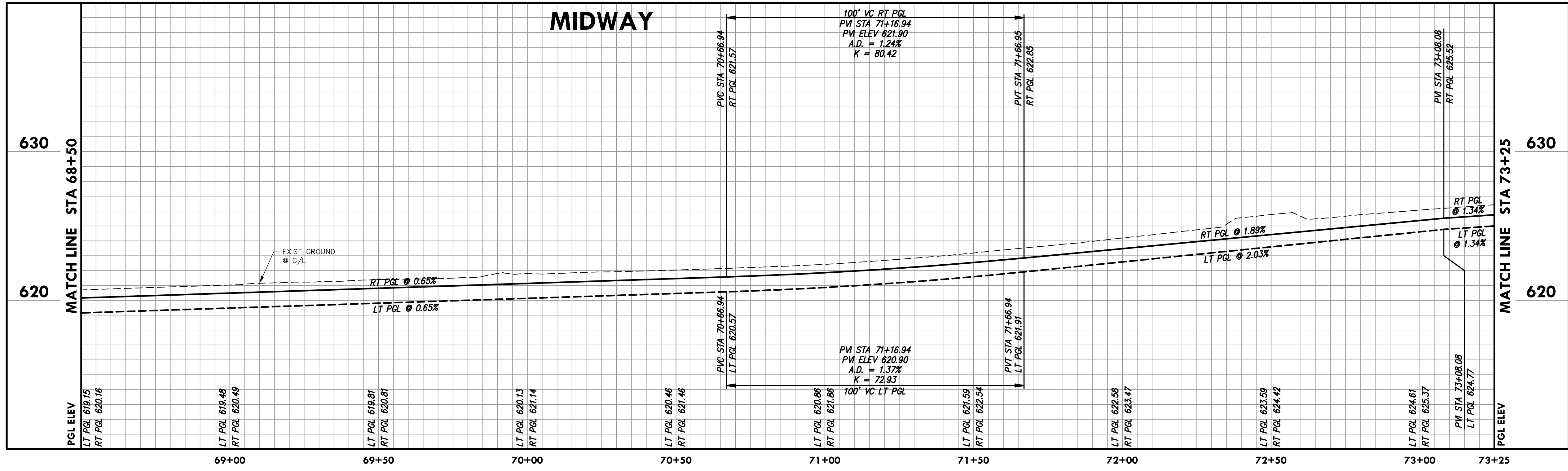


NOTE:
* FEATURES TO BE ADJUSTED TO FINISHED GRADE.

NOTES:
1. ALL PAVEMENT DIMENSIONS AND DATA POINTS ARE TO BACK OF CURB, UNLESS OTHERWISE NOTED.
2. PROPOSED GRADE LINE (PGL) ELEVATIONS ARE AT TOP OF PAVEMENT. SEE TYPICAL SECTIONS, SHEETS 23-26, FOR PGL LOCATIONS.
3. SEE SHEETS 127-172 FOR PARKWAY AND DRIVEWAY DESIGN INFORMATION.
4. SEE SHEETS 173-178 FOR INTERSECTION AND SIDE STREET DESIGN INFORMATION.
5. FOR PLAN CLARITY, EXISTING UTILITIES BEING ABANDONED AND/OR REMOVED AS PART OF THIS PROJECT ARE NOT SHOWN ON PAVING PLANS. SEE UTILITY PLANS FOR REMOVALS THAT ARE TO OCCUR DURING PAVING OPERATION.
6. EXISTING FEATURES TO BE REMOVED ARE NOT SHOWN ON THESE SHEETS FOR CLARITY. (SEE PARKWAY PLAN SHEETS 127-172)

POINT DATA

#	DESC	STA	OFFSET	ELEV	TC/TP	COMMENT
1	PCR	69+03.14	40.50' LT	619.81	1/C	-
2	PCR	70+03.42	41.50' LT	620.44	1/C	-
3	PCR	70+06.37	41.50' RT	621.38	1/C	-
4	PCR	68+80.49	42.50' RT	620.60	1/C	-
5	PC	69+04.57	6.50' LT	621.18	1/C	-
6	PT	69+04.54	2.50' LT	621.08	1/C	-
7	PC	69+97.62	3.50' RT	621.98	1/C	-
8	PT	69+97.62	7.50' RT	621.82	1/C	-
9	PI	73+03.05	3.50' RT	626.66	1/C	-



- (A) STA 69+28.51, 79.71' RT MIDWAY
INSTALL:
52 LF OF 18" RCP LATERAL
CONNECT TO PROPOSED 21"x18"
60" WYE
N 7036459.66
E 2478485.72
- (B) STA 69+76.40, 80.85' RT MIDWAY
INSTALL:
1-21"x18" 60" WYE
48 LF OF 21" RCP LATERAL
CONNECT TO EXIST 21" RCP
WITH CONC COLLAR
N 7036507.56
E 2478486.54
- (C) STA 70+21.87, 43.50' RT MIDWAY
INSTALL:
10 LF OF 21" RCP LATERAL
CONNECT TO EXIST 21" RCP
WITH CONC COLLAR
N 7036552.78
E 2478448.89
- (D) STA 70+18.92, 43.50' LT MIDWAY
INSTALL:
30 LF OF 21" RCP LATERAL
CONNECT TO EXIST 21" RCP
WITH CONC COLLAR
N 7036549.27
E 2478361.92
- (E) STA 71+95.55, 43.50' RT MIDWAY
INSTALL:
25 LF OF 21" RCP LATERAL
CONNECT TO EXIST 21" RCP
WITH CONC COLLAR
N 7036726.45
E 2478447.76

Drawing: C:\PROJECTS\ADD12615\Drawings\102_PAVING_P&P_SHEETS.dwg at Aug 30, 2021 11:15am by gromes
 Layout: 102_PAVING_P&P_SHEETS.dwg - XDP-PAVING-BASE.DWG - XDP-WATER-BASE.DWG - XDP-SEWER-BASE.DWG - XDP-STRIPING.DWG - XDP-TRAFFIC.dwg - XDP-UTIL-DR.dwg - XDP-UTILS.dwg
 User: gromes
 Title: 102_PAVING_P&P_SHEETS.dwg - XDP-PAVING-BASE.DWG - XDP-WATER-BASE.DWG - XDP-SEWER-BASE.DWG - XDP-STRIPING.DWG - XDP-TRAFFIC.dwg - XDP-UTIL-DR.dwg - XDP-UTILS.dwg

no.	revision	by	date
3	LINDBERGH WATER LINE REVISIONS	CAE	08/10/21
2	SHEET REISSUED FOR RFI #021	CAE	06/29/21
1	SHEET REISSUED FOR RFI #4	CAE	02/08/21

teague nall and perkins, inc
 5237 N. Riverside Drive, Suite 100
 Fort Worth, Texas 76137
 817.336.5773 ph 817.336.2813 fx
 www.tninc.com
 TBPELS: ENGR F-230; SURV 10011600, 10011601, 10194381
 GBPE: PEF007431; TBAE: BR 2673

ADDISON
 SM

scale
 horiz
 1"=20'
 vert
 1"=4'
 date
 Sep 2020

tnp

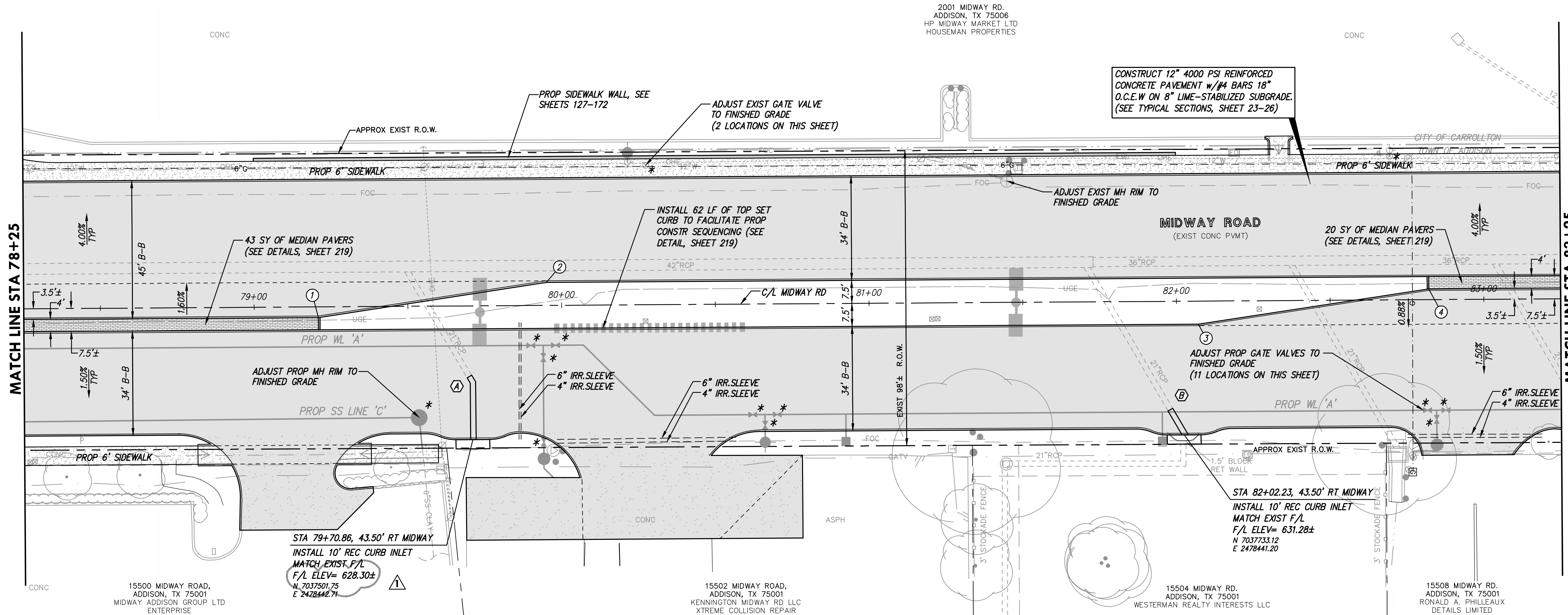
STATE OF TEXAS
 PROFESSIONAL ENGINEER
 CHRIS A. EDWARDS
 118947
 Date: 8/10/2021

Town of Addison, Texas
 Construction Plans for
Midway Road Revitalization
 Paving Plan & Profile
 (Sta 68+50 to Sta 73+25)

fnp project
 ADD12615
 sheet
99
 of
 373

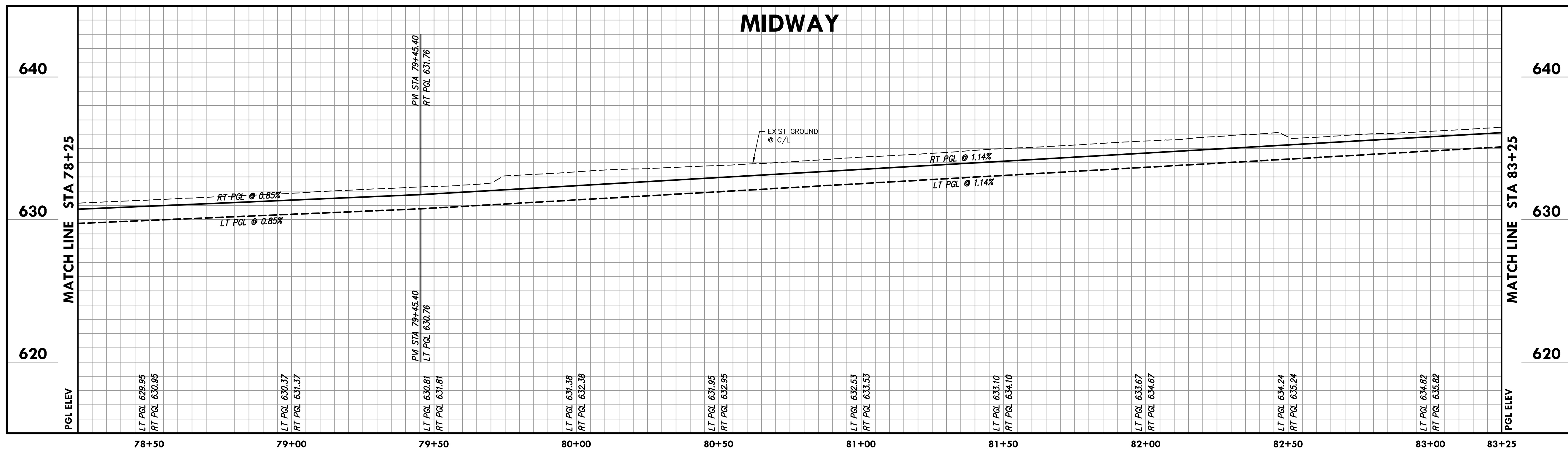
RELEASED FOR CONSTRUCTION

Drawing: O:\PROJECTS\ADD12615\add12615\00-102 PAVING P&P SHEETS.dwg at Jun 30, 2021 9:52am by townofadd
 Layout: Layout1.rvt
 User: x3d-traffic.dwg -- X3D-TRAFFIC.dwg -- X3D-STRIPING.dwg -- X3D-SEWER-BASE.dwg -- X3D-WATER-BASE.dwg -- X3D-PAVING-BASE.dwg -- X3D-STORM-BASE.dwg -- X3D-BASE.dwg -- X3D-BORDER.dwg -- X3D-PAVING-BASE.dwg -- X3D-SEWER-BASE.dwg -- X3D-WATER-BASE.dwg -- X3D-PAVING-BASE.dwg -- X3D-STORM-BASE.dwg -- X3D-BASE.dwg -- X3D-BORDER.dwg



- NOTE:**
* FEATURES TO BE ADJUSTED TO FINISHED GRADE.
- NOTES:**
- ALL PAVEMENT DIMENSIONS AND DATA POINTS ARE TO BACK OF CURB, UNLESS OTHERWISE NOTED.
 - PROPOSED GRADE LINE (PGL) ELEVATIONS ARE AT TOP OF PAVEMENT. SEE TYPICAL SECTIONS, SHEETS 23-26, FOR PGL LOCATIONS.
 - SEE SHEETS 127-172 FOR PARKWAY AND DRIVEWAY DESIGN INFORMATION.
 - SEE SHEETS 173-178 FOR INTERSECTION AND SIDE STREET DESIGN INFORMATION.
 - FOR PLAN CLARITY, EXISTING UTILITIES BEING ABANDONED AND/OR REMOVED AS PART OF THIS PROJECT ARE NOT SHOWN ON PAVING PLANS. SEE UTILITY PLANS FOR REMOVALS THAT ARE TO OCCUR DURING PAVING OPERATION.
 - EXISTING FEATURES TO BE REMOVED ARE NOT SHOWN ON THESE SHEETS FOR CLARITY (SEE PARKWAY PLAN SHEETS 127-172)

POINT DATA						
#	DESC	STA	OFFSET	ELEV	TC/TP	COMMENT
1	PI	79+20.89	3.50' RT	632.54	T/C	-
2	PI	79+95.07	7.50' LT	632.65	T/C	-
3	PI	82+07.08	7.50' RT	633.75	T/C	-
4	PI	82+82.08	3.50' LT	636.51	T/C	-



- (A)** STA 79+70.86, 43.50' RT MIDWAY
INSTALL:
1-21" 60" BEND
20 LF OF 21" RCP LATERAL
CONNECT TO EXIST 21" RCP
WITH CONC COLLAR
N 7037501.75
E 2478442.71
- (B)** STA 82+02.23, 43.50' RT MIDWAY
INSTALL:
10 LF OF 21" RCP LATERAL
CONNECT TO EXIST 21" RCP
WITH CONC COLLAR
N 7037733.12
E 2478441.20

no.	revision	by	date
1	SHEET REISSUED FOR RFI #021	CAE	06/29/21

teague nall and perkins, inc
 5237 N. Riverside Drive, Suite 100
 Fort Worth, Texas 76137
 817.336.5773 ph 817.336.2813 fx
 www.tninc.com
 TBPELS: ENGR F-230; SURV 10011600, 10011601, 10194381
 GBPE: PEF007431; TBAE: BR 2673



scale
 horiz
 1"=20'
 vert
 1"=4'
 date
 Sep 2020



Town of Addison, Texas
 Construction Plans for
Midway Road Revitalization
 Paving Plan & Profile
 (Sta 78+25 to Sta 83+25)

Imp project
 ADD12615
 sheet
101
 of
 373

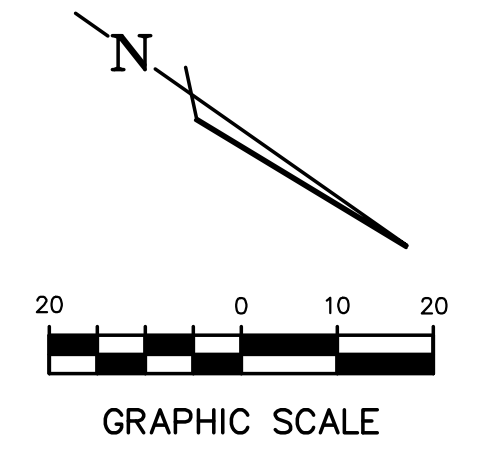
RELEASED FOR CONSTRUCTION

2101 MIDWAY RD.
CARROLLTON, TX 75006
G&I VII MIDWAY LP
NESLON WONG DDS

2121 MIDWAY RD.
CARROLLTON, TX 75006
JMTY GROUP, LP
BEAUTICONTROL, INC.

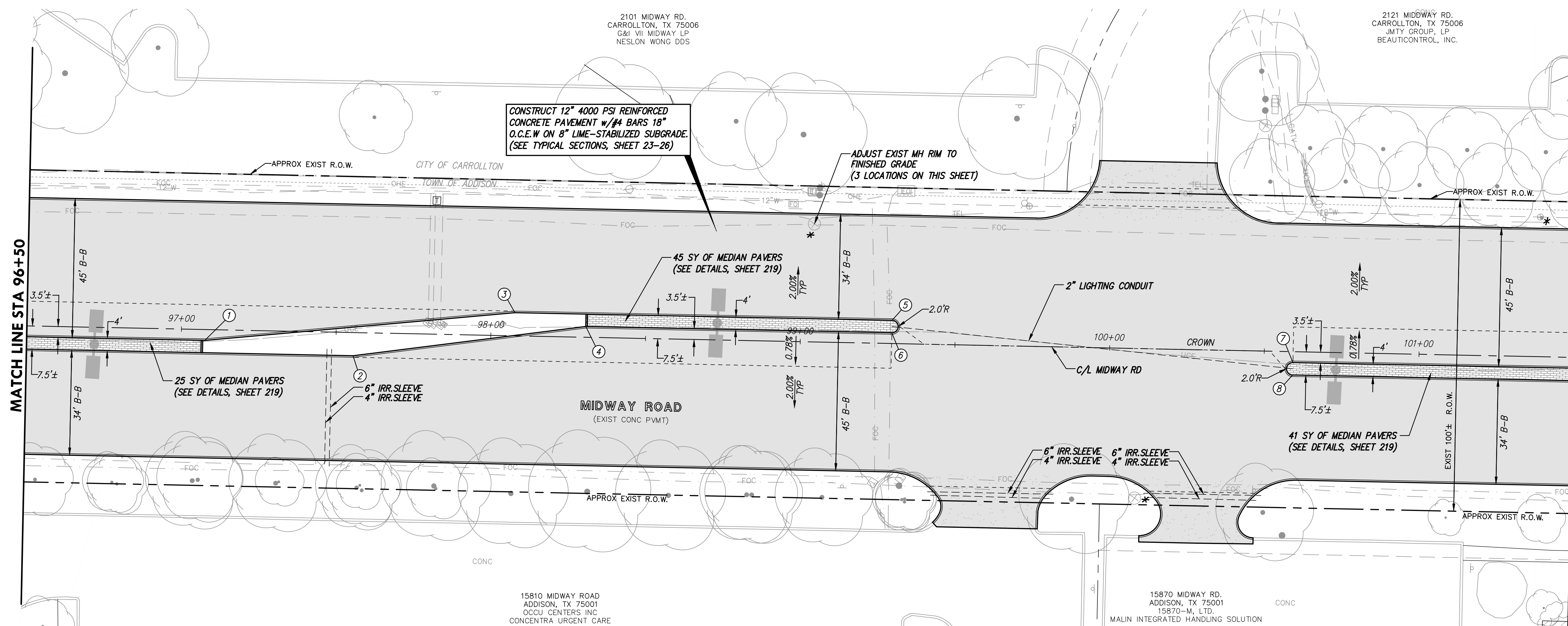
CONSTRUCT 12" 4000 PSI REINFORCED
CONCRETE PAVEMENT w/ #4 BARS 18"
O.C.E.W ON 8" LIME-STABILIZED SUBGRADE.
(SEE TYPICAL SECTIONS, SHEET 23-26)

ADJUST EXIST MH RIM TO
FINISHED GRADE
(3 LOCATIONS ON THIS SHEET)



MATCH LINE STA 96+50

MATCH LINE STA 101+50

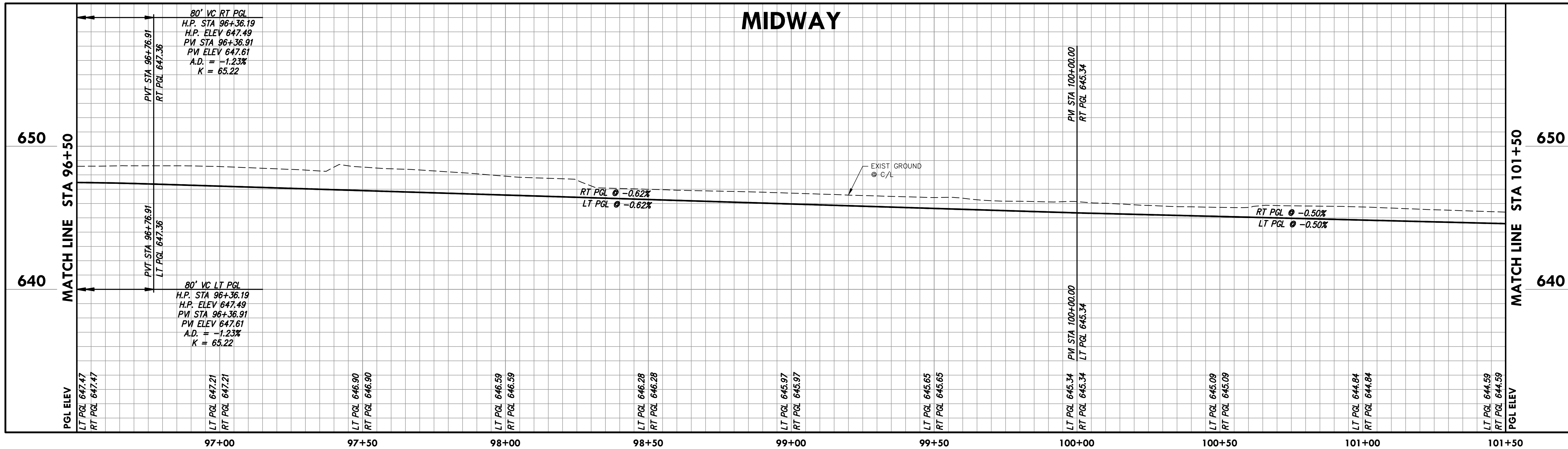


POINT DATA						
#	DESC	STA	OFFSET	ELEV	TC/TP	COMMENT
1	PI	97+07.61	3.50' RT	648.41	T/C	-
2	PI	97+55.60	7.50' RT	648.03	T/C	-
3	PI	98+07.61	7.50' LT	647.70	T/C	-
4	PI	98+30.60	3.50' LT	647.64	T/C	-
5	PC	99+29.53	7.50' LT	646.94	T/C	-
6	PT	99+29.53	3.50' LT	647.03	T/C	-
7	PC	100+59.32	3.50' RT	646.29	T/C	-
8	PT	100+59.32	7.50' RT	646.20	T/C	-

15810 MIDWAY ROAD
ADDISON, TX 75001
OCU CENTERS INC
CONCENTRA URGENT CARE

15870 MIDWAY RD.
ADDISON, TX 75001
15870-M, LTD.
MALIN INTEGRATED HANDLING SOLUTION

MIDWAY



NOTE:
* FEATURES TO BE ADJUSTED TO FINISHED GRADE.

- NOTES:
- ALL PAVEMENT DIMENSIONS AND DATA POINTS ARE TO BACK OF CURB, UNLESS OTHERWISE NOTED.
 - PROPOSED GRADE LINE (PGL) ELEVATIONS ARE AT TOP OF PAVEMENT. SEE TYPICAL SECTIONS, SHEETS 23-26, FOR PGL LOCATIONS.
 - SEE SHEETS 127-172 FOR PARKWAY AND DRIVEWAY DESIGN INFORMATION.
 - SEE SHEETS 173-178 FOR INTERSECTION AND SIDE STREET DESIGN INFORMATION.
 - FOR PLAN CLARITY, EXISTING UTILITIES BEING ABANDONED AND/OR REMOVED AS PART OF THIS PROJECT ARE NOT SHOWN ON PAVING PLANS. SEE UTILITY PLANS FOR REMOVALS THAT ARE TO OCCUR DURING PAVING OPERATION.
 - EXISTING FEATURES TO BE REMOVED ARE NOT SHOWN ON THESE SHEETS FOR CLARITY. (SEE PARKWAY PLAN SHEETS 127-172)

Drawing: C:\PROJECTS\ADD12615\add\plans\p&p SHEETS.dwg at Nov 04, 2020 - 4:19pm by ceedwards
Layout: Layout(21) - Area: 230-PAVING-BASE.dwg - X3D-PAVING-BASE.dwg - X3D-WATER-BASE.dwg - X3D-SEWER-BASE.dwg - X3D-STRIPING.dwg - X3D-TRAFFIC.dwg - seal-JLM_IR.dwg - SEAL-MKS.dwg

no.	revision	by	date

teague nall and perkins, inc
5237 N. Riverside Drive, Suite 100
Fort Worth, Texas 76137
817.336.5773 ph 817.336.2813 fx
www.tnppinc.com
TBPELS: ENGR F-230; SURV 10011600, 10011601, 10194381
GBPE: PEF007431; TBAE: BR 2673

scale
horiz
1"=20'
vert
1"=4'
date
Sep 2020

Town of Addison, Texas
Construction Plans for
Midway Road Revitalization
Paving Plan & Profile
(Sta 96+50 to Sta 101+50)

tnp project
ADD12615
sheet
105
of
373

RELEASED FOR CONSTRUCTION

