

MATCH LINE SHEET 158

POINT DATA						
#	DESC	STA	OFFSET	ELEV	TC/TP	COMMENT
1	PCR	41+18.82	42.50' LT	618.30	T/C	Ø B/C
2	S/W	41+34.81	49.66' LT	618.05	T/P	GRADE BREAK
3	S/W	41+39.27	61.04' LT	618.26	T/P	GRADE BREAK
4	PCR	41+39.32	62.50' LT	618.29	T/P	-
5	PI	41+39.37	67.08' LT	618.39	T/P	-
6	PI	41+38.70	70.11' LT	618.46	T/P	MATCH EXIST
7	S/W	41+19.78	48.50' LT	617.94	T/P	-
8	S/W	41+19.35	59.50' LT	618.11	T/P	-
9	PI	41+32.05	60.48' LT	618.18	B/W	SIDEWALK WALL TRANSITION
10	PI	41+32.10	64.70' LT	618.30	B/W	END SIDEWALK WALL
11	PI	41+58.40	69.89' LT	618.56	T/P	MATCH EXIST
12	S/W	41+58.32	61.51' LT	618.51	T/P	GRADE BREAK
13	PCR	41+58.32	62.50' LT	618.37	T/P	-
14	S/W	41+58.37	51.49' LT	618.36	T/P	GRADE BREAK
15	PCR	41+68.95	42.50' LT	618.19	T/C	Ø B/C
16	PCR	41+78.45	52.50' LT	618.05	T/P	-
17	S/W	41+78.45	53.12' LT	618.07	T/P	GRADE BREAK
18	PCR	41+78.45	61.22' LT	618.19	T/P	-
19	S/W	41+79.36	63.14' LT	618.22	T/P	GRADE BREAK
20	PI	41+75.98	72.65' LT	618.78	T/P	MATCH EXIST

POINT DATA						
#	DESC	STA	OFFSET	ELEV	TC/TP	COMMENT
21	PCR	42+14.10	52.50' LT	618.33	T/C	Ø B/C
22	S/W	42+01.25	58.50' LT	618.40	T/P	GRADE BREAK
23	PI	41+98.37	67.65' LT	618.51	T/P	-
24	S/W	41+98.39	69.50' LT	618.54	T/P	-
25	PI	41+97.42	72.65' LT	618.60	T/P	MATCH EXIST
26	PC	41+98.54	84.33' LT	618.91	T/P	PROP 6" CURB
27	PI	41+97.57	87.85' LT	618.95	T/P	MATCH EXIST
28	PT	42+01.04	86.85' LT	619.05	T/P	PROP 6" CURB
29	PC	42+01.85	86.65' LT	619.16	T/P	PROP 6" CURB
30	PI	42+05.35	87.85' LT	619.28	T/P	MATCH EXIST
31	PT	42+04.35	84.35' LT	619.44	T/P	PROP 6" CURB
32	PI	42+04.35	75.00' LT	619.65	T/P	PROP 6" CURB
33	S/W	42+00.93	73.50' LT	618.65	B/W	BEGIN SIDEWALK WALL
34	S/W	42+00.89	69.50' LT	618.56	B/W	SIDEWALK WALL TRANSITION
35	S/W	43+42.48	69.50' LT	619.57	B/W	-
36	S/W	43+41.88	58.50' LT	619.40	T/P	-
37	PI	43+57.73	75.00' LT	621.11	T/P	PROP 6" CURB
38	PI	44+35.58	43.10' LT	620.22	T/C	Ø B/C
39	PCR	44+36.58	43.10' LT	620.23	T/C	Ø B/C
40	S/W	44+51.55	49.10' LT	620.40	T/P	GRADE BREAK

POINT DATA						
#	DESC	STA	OFFSET	ELEV	TC/TP	COMMENT
41	S/W	44+56.68	59.09' LT	620.59	T/P	GRADE BREAK
42	PI	44+54.64	60.10' LT	620.67	B/W	SIDEWALK WALL TRANSITION
43	PCR	44+57.08	63.10' LT	620.94	T/P	-
44	PI	44+57.72	75.83' LT	621.89	T/P	MATCH EXIST
45	S/W	44+58.88	49.10' LT	620.28	T/P	-
46	S/W	44+56.43	60.10' LT	620.45	B/W	-
47	PI	44+56.83	67.09' LT	622.30	T/P	PROP 6" CURB
48	PI	44+52.21	66.60' LT	623.13	T/C	END PROP 6" CURB; Ø B/C
49	PI	44+54.71	66.59' LT	621.23	B/W	END SIDEWALK WALL
50	PI	44+81.45	75.83' LT	622.10	T/P	MATCH EXIST
51	PCR	44+81.08	62.50' LT	621.06	T/P	-
52	S/W	44+83.50	58.50' LT	620.83	B/W	-
53	S/W	44+81.80	59.50' LT	620.82	T/P	-
54	S/W	44+81.47	58.51' LT	620.74	T/P	GRADE BREAK
55	S/W	44+86.60	48.50' LT	620.63	T/P	GRADE BREAK
56	PI	44+83.64	64.53' LT	621.23	B/W	BEGIN SIDEWALK WALL
57	PI	44+86.77	64.50' LT	622.45	T/C	BEGIN PROP 6" CURB; Ø B/C

- NOTES:
- ALL DIMENSIONS AND RADII LABELS ARE TO BACK OF CURB, UNLESS OTHERWISE NOTED.
 - ALL DATA POINTS DRIVEWAYS, RAMPS, AND SIDEWALKS ARE TO FACE OF CURB OR WALL, UNLESS OTHERWISE NOTED.
 - SEE SHEETS 85-107 FOR ROADWAY AND MEDIAN DESIGN INFORMATION.
 - SEE SHEETS 173-178 FOR INTERSECTION AND SIDE STREET DESIGN INFORMATION.
 - SEE SHEETS 17-22 FOR LIMITS OF PAVEMENT, SIDEWALK, RET WALL, TREE, AND OTHER MISCELLANEOUS REMOVALS.
 - SEE SHEETS 17-22 FOR A DETAILED INVENTORY OF UTILITIES AND APPURTENANCES TO BE RELOCATED BY OTHERS.
 - SEE SHEET 220 FOR DETAILS OF PROPOSED SIDEWALK TRAIL WALL, SIDEWALK WALL, AND RETAINING WALLS, WITH STONE VENEER.

Drawing: C:\PROJECTS\ADD12615\cad\sheet\172-144\WEST PARKWAY SHEETS.dwg at Nov 04, 2020 - 5:19pm by cedwards
Layout: Layout(3) - Add-Paving-Base.dwg - Add-Paving-Base.dwg - Add-Storm-Base.dwg - Add-Storm-Base.dwg - Add-Striping.dwg - Add-Striping.dwg - Seal-UM.dwg - Seal-UM.dwg

no.	revision	by	date

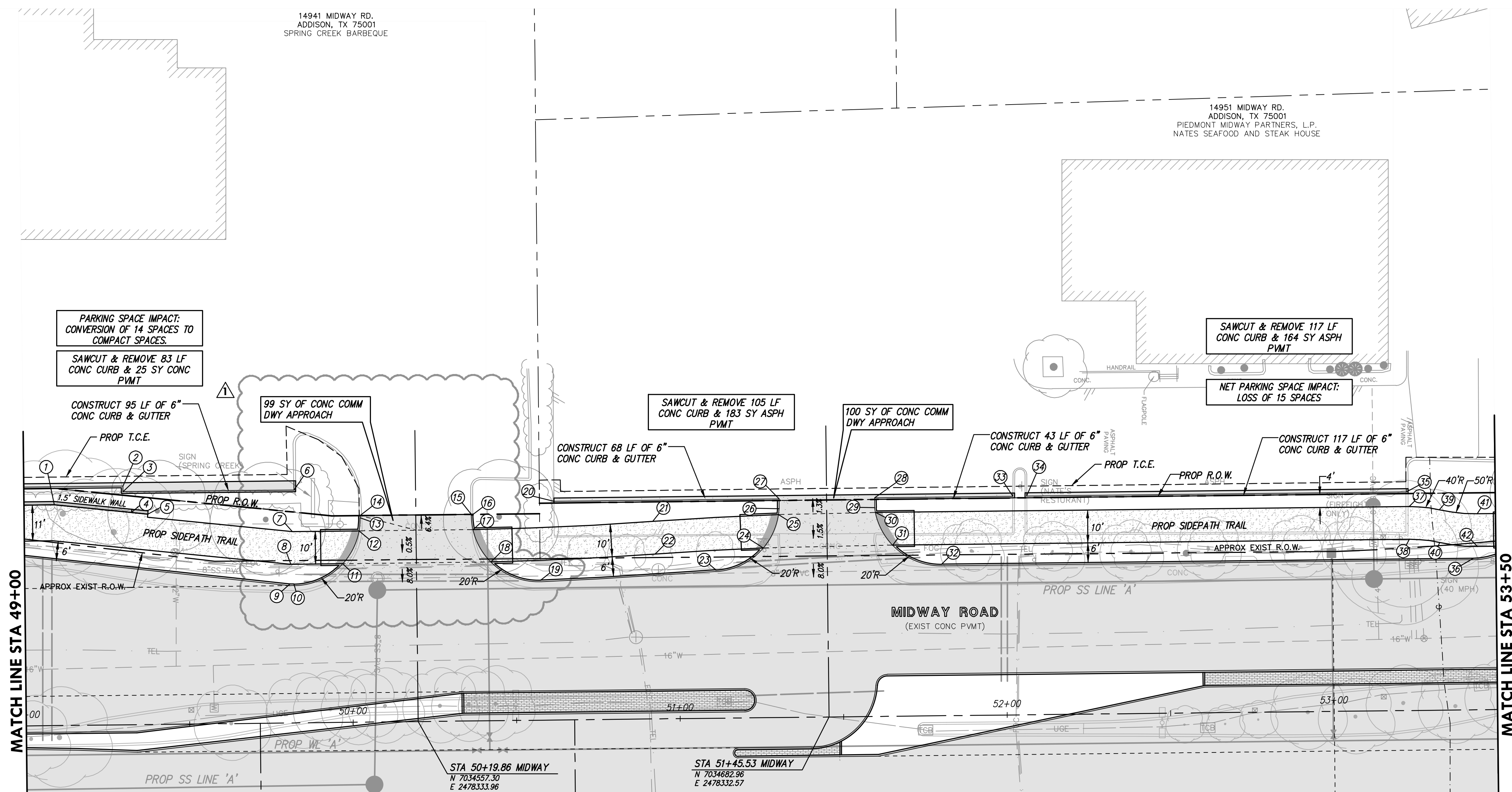
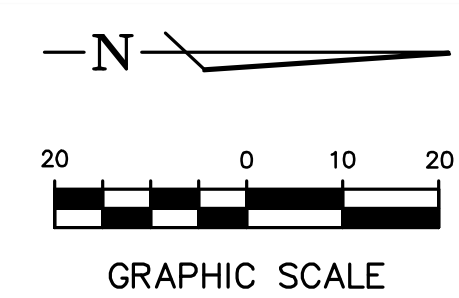
teague nall and perkins, inc
5237 N. Riverside Drive, Suite 100
Fort Worth, Texas 76137
817.336.5773 ph 817.336.2813 fx
www.tnppinc.com
TBPELS: ENGR F-230; SURV 10011600, 10011601, 10194381
GBPE: PEF007431; TBAE: BR 2673

scale
horiz
1"=20'
vert
n/a
date
Sep 2020

CHRIS A. EDWARDS
118947
LICENSED PROFESSIONAL ENGINEER
Date: 9/29/2020

Town of Addison, Texas
Construction Plans for
Midway Road Revitalization
West Parkway Plan
(Sta 41+00 to Sta 45+00)

tnp project
ADD12615
sheet
135
of
373



MATCH LINE SHEET 160

POINT DATA						
#	DESC	STA	OFFSET	ELEV	TC/TP	COMMENT
1	S/W	49+09.35	67.50' LT	624.65	B/W	-
2	PI	49+30.39	73.00' LT	625.88	T/P	PROP 6" CURB
3	PI	49+30.39	71.27' LT	625.90	T/P	PROP 6" CURB
4	S/W	49+32.94	64.91' LT	624.91	B/W	SIDEWALK WALL TRANSITION
5	S/W	49+37.91	64.36' LT	624.98	B/W	END SIDEWALK WALL
6	PI	49+82.66	71.19' LT	625.65	T/P	END PROP 6" CURB
7	S/W	49+82.02	58.50' LT	625.43	T/P	-
8	S/W	49+81.47	48.50' LT	625.28	T/P	-
9	PI	49+81.14	42.50' LT	625.19	T/C	Ø B/C
10	PCR	49+82.36	42.50' LT	625.20	T/C	Ø B/C
11	S/W	49+97.33	48.50' LT	625.32	T/P	GRADE BREAK
12	S/W	50+02.47	58.50' LT	625.42	T/P	GRADE BREAK
13	PCR	50+02.86	62.50' LT	625.55	T/P	-
14	PI	50+02.84	63.19' LT	625.57	T/P	MATCH EXIST
15	PI	50+36.86	63.16' LT	625.37	T/P	MATCH EXIST

POINT DATA						
#	DESC	STA	OFFSET	ELEV	TC/TP	COMMENT
16	PCR	50+36.86	62.86' LT	625.39	T/P	-
17	S/W	50+37.32	38.52' LT	625.72	T/P	GRADE BREAK
18	S/W	50+42.66	48.57' LT	625.72	T/P	GRADE BREAK
19	PCR	50+57.89	42.86' LT	625.83	T/C	Ø B/C
20	PI	50+62.14	66.86' LT	625.29	T/P	BEGIN PROP 6" CURB
21	S/W	50+92.28	60.40' LT	626.36	T/P	-
22	S/W	50+92.90	50.42' LT	626.22	T/P	-
23	PCR	51+11.39	45.40' LT	626.25	T/C	Ø B/C
24	S/W	51+25.99	51.93' LT	626.36	T/P	GRADE BREAK
25	S/W	51+30.74	62.06' LT	626.54	T/P	GRADE BREAK
26	PI	51+30.95	63.86' LT	626.49	T/P	PROP 6" CURB
27	PI	51+30.98	66.86' LT	626.41	T/P	-
28	PI	51+60.17	66.86' LT	626.63	T/P	-
29	PI	51+60.17	63.83' LT	626.16	T/P	PROP 6" CURB
30	S/W	51+60.40	62.36' LT	626.68	T/P	GRADE BREAK

POINT DATA						
#	DESC	STA	OFFSET	ELEV	TC/TP	COMMENT
31	S/W	51+65.54	52.36' LT	626.56	T/P	GRADE BREAK
32	PCR	51+80.51	46.36' LT	626.61	T/C	Ø B/C
33	PI	52+02.46	66.86' LT	626.56	T/P	END PROP 6" CURB
34	PI	52+06.69	66.86' LT	626.56	T/P	BEGIN PROP 6" CURB
35	PI	53+22.81	66.86' LT	625.42	T/P	END PROP 6" CURB
36	PCR	53+43.09	46.36' LT	627.44	T/C	Ø B/C
37	PC	53+23.58	52.36' LT	627.58	T/P	-
38	PC	53+23.58	52.36' LT	627.43	T/P	-
39	PRC	53+32.81	61.28' LT	627.40	T/P	-
40	PRC	53+32.81	51.28' LT	627.47	T/P	-
41	PT	53+44.35	59.94' LT	627.64	T/P	-
42	PT	53+44.35	49.94' LT	627.49	T/P	-

- NOTES:
- ALL DIMENSIONS AND RADI LABELS ARE TO BACK OF CURB, UNLESS OTHERWISE NOTED.
 - ALL DATA POINTS DRIVEWAYS, RAMPS, AND SIDEWALKS ARE TO FACE OF CURB OR WALL, UNLESS OTHERWISE NOTED.
 - SEE SHEETS 85-107 FOR ROADWAY AND MEDIAN DESIGN INFORMATION.
 - SEE SHEETS 173-178 FOR INTERSECTION AND SIDE STREET DESIGN INFORMATION.
 - SEE SHEETS 17-22 FOR LIMITS OF PAVEMENT, SIDEWALK, RET WALL, TREE, AND OTHER MISCELLANEOUS REMOVALS.
 - SEE SHEETS 17-22 FOR A DETAILED INVENTORY OF UTILITIES AND APPURTENANCES TO BE RELOCATED BY OTHERS.
 - SEE SHEET 220 FOR DETAILS OF PROPOSED SIDEWALK TRAIL WALL, SIDEWALK WALL, AND RETAINING WALLS, WITH STONE VENEER.

Drawing: O:\PROJECTS\ADD12615\00\Drawings\122-144 WEST PARKWAY SHEETS.dwg at Jul 13, 2021 - 2:09pm by taylor.d...
 Layout: Layout(1) - 144 West Parkway.dwg - XBP-PAVING-BASE.DWG - XBP-SEWER-BASE.DWG - XBP-WATER-BASE.DWG - XBP-STORM-BASE.DWG - XBP-STRIPING.DWG - XBP-SIGNAL-WIRE.DWG
 User: taylor.d...

no.	revision	by	date
1	SHEET REISSUED FOR DRIVEWAY REDESIGN	CAE	07/13/21

teague nall and perkins, inc
 5237 N. Riverside Drive, Suite 100
 Fort Worth, Texas 76137
 817.336.5773 ph 817.336.2813 fx
 www.tnpsc.com
 TBPELS: ENGR F-230; SURV 10011600, 10011601, 10194381
 GBPE: PEF007431; TBAE: BR 2673



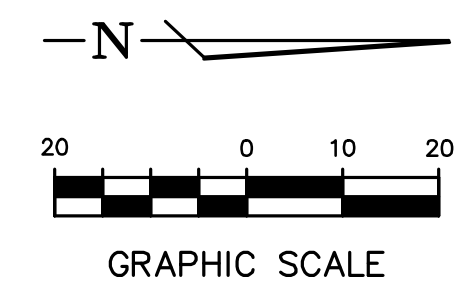
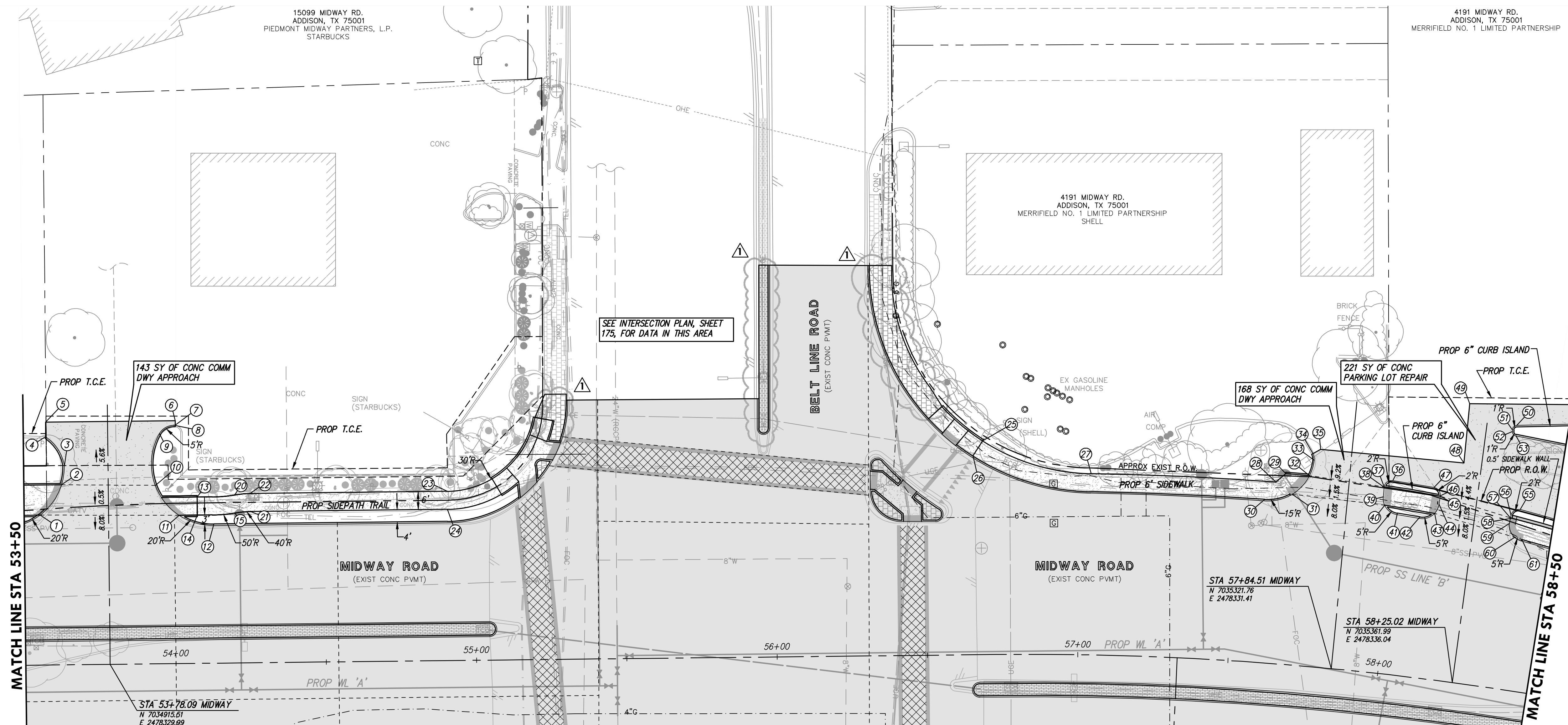
scale
 horiz
1"=20'
 vert
 n/a
 date
Sep 2020



STATE OF TEXAS
 CHRIS A. EDWARDS
 118947
 LICENSED PROFESSIONAL ENGINEER
 Date: 7/13/2021

Town of Addison, Texas
 Construction Plans for
Midway Road Revitalization
 West Parkway Plan
 (Sta 49+00 to Sta 53+50)

tnp project
 ADD12615
 sheet
137
 of
373



MATCH LINE SHEET 161

POINT DATA						
#	DESC	STA	OFFSET	ELEV	TC/TP	COMMENT
1	S/W	53+53.35	49.94' LT	627.33	T/P	GRADE BREAK
2	S/W	53+62.56	59.94' LT	627.42	T/P	GRADE BREAK
3	PCR	53+63.59	66.36' LT	627.03	T/P	-
4	PCR	53+57.45	75.99' LT	626.36	T/P	MATCH EXIST
5	PI	53+57.51	80.87' LT	626.12	T/P	MATCH EXIST
6	PI	54+00.63	80.87' LT	626.30	T/P	MATCH EXIST
7	PCR	54+00.63	79.37' LT	626.51	T/P	MATCH EXIST
8	PT	54+00.10	79.37' LT	626.46	T/P	-
9	PCR/PC	53+85.34	76.63' LT	626.62	T/P	-
10	GB	53+83.80	59.42' LT	627.52	T/P	-
11	S/W	54+01.63	49.36' LT	627.51	T/P	GRADE BREAK
12	PCR	54+13.09	46.36' LT	627.71	T/P	Ø B/C
13	PC	54+07.63	55.36' LT	627.85	T/P	-
14	PC	54+07.63	49.36' LT	627.76	T/P	-
15	PRC	54+20.07	49.92' LT	627.76	T/P	-
20	PRC	54+20.07	55.92' LT	0.00	T/P	-
21	PT	54+25.32	50.36' LT	627.75	T/P	-
22	PT	54+25.32	56.36' LT	627.84	T/P	-
23	PC	54+80.82	56.36' LT	627.37	T/P	-
24	PC	54+80.82	50.36' LT	627.28	T/P	-

POINT DATA						
#	DESC	STA	OFFSET	ELEV	TC/TP	COMMENT
25	PT	56+69.17	71.24' LT	625.01	T/P	-
26	PT	56+65.87	66.23' LT	624.79	T/P	-
27	PC	57+03.37	60.36' LT	624.63	T/P	-
28	S/W	57+61.59	60.36' LT	623.43	T/P	-
29	S/W	57+64.43	63.36' LT	623.40	T/P	-
30	PCR	57+58.49	54.36' LT	623.71	T/P	Ø B/C
31	S/W	57+66.98	56.74' LT	623.26	T/P	GRADE BREAK
32	S/W	57+71.93	63.36' LT	623.24	T/P	GRADE BREAK
33	PCR	57+73.02	68.59' LT	623.57	T/P	-
34	PCR	57+72.44	70.72' LT	623.72	T/P	MATCH EXIST
35	PI	57+74.71	72.39' LT	623.72	T/P	MATCH EXIST
36	PCR	57+98.08	64.37' LT	622.91	T/P	-
37	S/W	57+95.62	61.97' LT	622.68	T/P	GRADE BREAK
38	PCR	57+95.62	61.85' LT	622.68	T/P	-
39	PCR	57+95.65	58.67' LT	622.63	T/P	-
40	S/W	57+96.38	55.94' LT	622.57	T/P	GRADE BREAK
41	PCR	58+00.65	53.75' LT	622.79	T/P	-
42	PCR	58+07.92	53.36' LT	622.65	T/P	-
43	S/W	58+12.38	55.07' LT	622.27	T/P	GRADE BREAK
44	PCR	58+13.40	58.28' LT	622.29	T/P	-

POINT DATA						
#	DESC	STA	OFFSET	ELEV	TC/TP	COMMENT
45	S/W	58+13.43	61.02' LT	622.33	T/P	GRADE BREAK
46	PCR	58+13.43	61.14' LT	622.33	T/P	-
47	PCR	58+11.21	63.67' LT	622.56	T/P	-
48	PI	58+19.50	72.97' LT	622.91	T/P	MATCH EXIST
49	PI	58+18.90	92.77' LT	623.00	T/P	MATCH EXIST
50	PT	58+34.14	87.76' LT	622.34	T/P	PROP 6" CURB
51	PC	58+32.99	86.07' LT	622.37	T/P	PROP 6" CURB
52	PC	58+33.06	85.53' LT	622.36	T/P	PROP 6" CURB
53	PT	58+34.36	84.25' LT	622.28	T/P	PROP 6" CURB
55	PT	58+38.96	60.19' LT	621.78	T/P	-
56	PC	58+36.34	57.87' LT	621.77	T/P	-
57	S/W	58+36.29	56.97' LT	621.76	T/P	GRADE BREAK
58	S/W	58+36.76	56.92' LT	621.75	B/W	BEGIN SIDEWALK WALL
59	PCR	58+36.17	55.10' LT	621.73	T/P	-
60	S/W	58+38.56	50.76' LT	621.62	T/P	-
61	PCR	58+40.86	50.42' LT	622.04	T/P	GRADE BREAK

- NOTES:
- ALL DIMENSIONS AND RADI LABELS ARE TO BACK OF CURB, UNLESS OTHERWISE NOTED.
 - ALL DATA POINTS DRIVEWAYS, RAMPS, AND SIDEWALKS ARE TO FACE OF CURB OR WALL, UNLESS OTHERWISE NOTED.
 - SEE SHEETS 85-107 FOR ROADWAY AND MEDIAN DESIGN INFORMATION.
 - SEE SHEETS 173-178 FOR INTERSECTION AND SIDE STREET DESIGN INFORMATION.
 - SEE SHEETS 17-22 FOR LIMITS OF PAVEMENT, SIDEWALK, RET WALL, TREE, AND OTHER MISCELLANEOUS REMOVALS.
 - SEE SHEETS 17-22 FOR A DETAILED INVENTORY OF UTILITIES AND APPURTENANCES TO BE RELOCATED BY OTHERS.
 - SEE SHEET 220 FOR DETAILS OF PROPOSED SIDEWALK TRAIL WALL, SIDEWALK WALL, AND RETAINING WALLS, WITH STONE VENEER.

Drawing: O:\PROJECTS\ADD12615\ADD12615.dwg (Sheet) 12-14-2021 4:05pm by toverhuf
 Copy: Layout (1) - Date: 04/13/2021 - User: toverhuf
 XREF: PLANING-BASE.DWG - XREF: WATER-BASE.DWG - XREF: STORM-BASE.DWG - XREF: STRIPING.DWG - XREF: SIGNAGE.DWG - XREF: UTILITIES.DWG - XREF: SITEWORK.DWG - XREF: TRAFFIC.DWG - XREF: LANDSCAPE.DWG - XREF: CONSTRUCTION.DWG - XREF: GENERAL.DWG

no.	revision	by	date
1	SHEET REISSUED FOR RFI #11, 12, AND 13	CAE	04/13/21

teague nall and perkins, inc
 5237 N. Riverside Drive, Suite 100
 Fort Worth, Texas 76137
 817.336.5773 ph 817.336.2813 fx
 www.tnpsc.com
 TBPELS: ENGR F-230; SURV 10011600, 10011601, 10194381
 GBPE: PEF007431; TBAE: BR 2673



scale
 horiz
 1"=20'
 vert
 n/a
 date
 Sep 2020



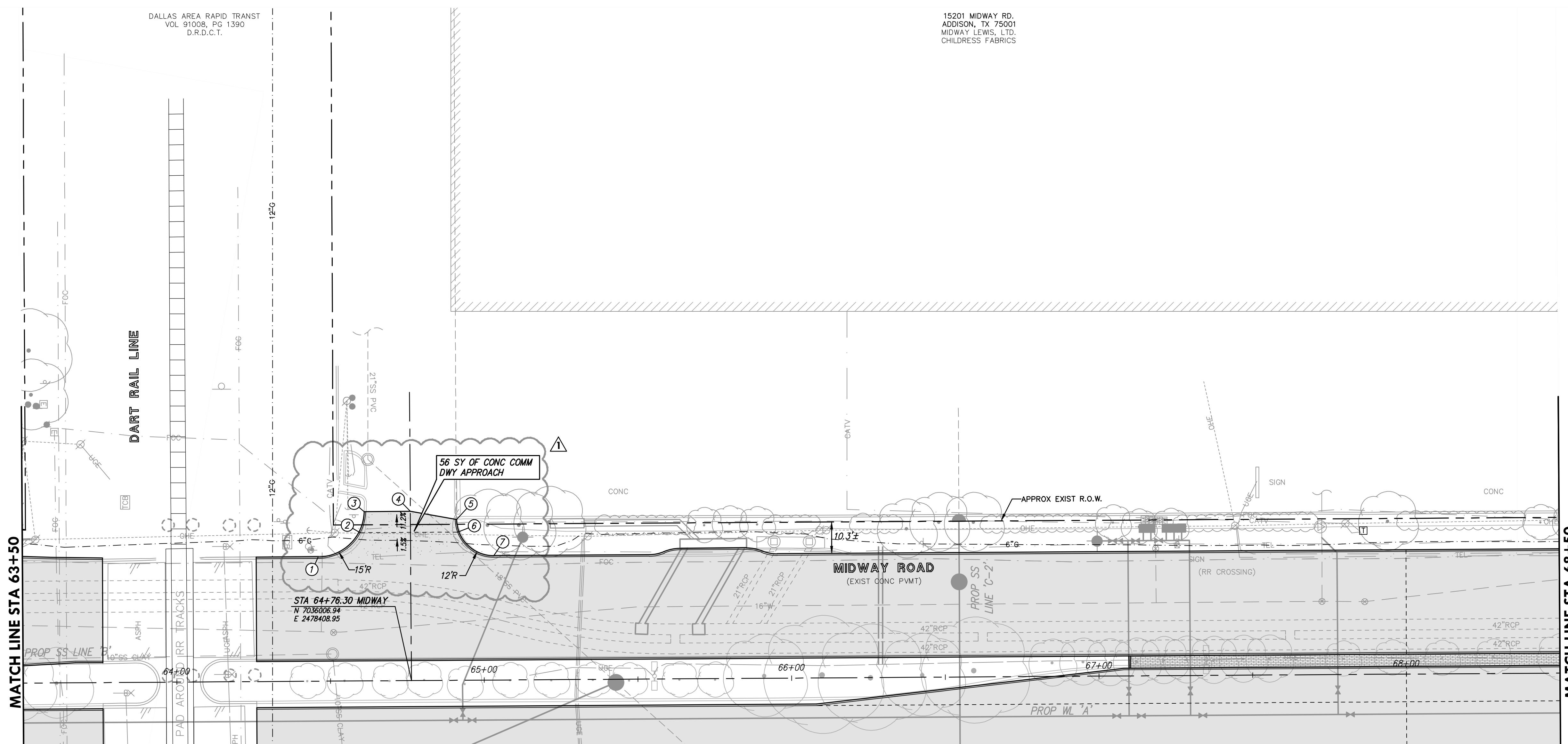
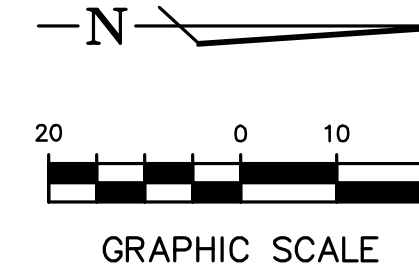
Professional Engineer
 CHRIS A. EDWARDS
 118947
 Date: 4/13/2021

Town of Addison, Texas
 Construction Plans for
Midway Road Revitalization
 West Parkway Plan
 (Sta 53+50 to Sta 58+50)

tnp project
 ADD12615
 sheet
138
 of
 373

DALLAS AREA RAPID TRANST
VOL 91008, PG 1390
D.R.D.C.T.

15201 MIDWAY RD.
ADDISON, TX 75001
MIDWAY LEWIS, LTD.
CHILDRESS FABRICS



MATCH LINE SHEET 163

#	DESC	STA	OFFSET	ELEV	T/C/TP	COMMENT
1	PCR	64+46.27	40.50' LT	618.09	T/C	Ø B/C
2	GB	64+59.95	48.23' LT	618.20	T/P	-
3	PI	64+61.26	55.09' LT	617.81	T/C	MATCH EXIST
4	PI	64+76.30	55.09' LT	617.22	T/P	MATCH EXIST
5	PI	64+91.40	52.43' LT	617.49	T/P	MATCH EXIST
6	GB	64+91.65	48.23' LT	617.83	T/P	-
7	PCR	65+03.40	40.50' LT	618.34	T/C	Ø B/C

- NOTES:
- ALL DIMENSIONS AND RADII LABELS ARE TO BACK OF CURB, UNLESS OTHERWISE NOTED.
 - ALL DATA POINTS DRIVEWAYS, RAMPS, AND SIDEWALKS ARE TO FACE OF CURB OR WALL, UNLESS OTHERWISE NOTED.
 - SEE SHEETS 85-107 FOR ROADWAY AND MEDIAN DESIGN INFORMATION.
 - SEE SHEETS 173-178 FOR INTERSECTION AND SIDE STREET DESIGN INFORMATION.
 - SEE SHEETS 17-22 FOR LIMITS OF PAVEMENT, SIDEWALK, RET WALL, TREE, AND OTHER MISCELLANEOUS REMOVALS.
 - SEE SHEETS 17-22 FOR A DETAILED INVENTORY OF UTILITIES AND APPURTENANCES TO BE RELOCATED BY OTHERS.
 - SEE SHEET 220 FOR DETAILS OF PROPOSED SIDEWALK TRAIL WALL, SIDEWALK WALL, AND RETAINING WALLS, WITH STONE VENEER.

Drawing: O:\PROJECTS\ADD12615\12-144 WEST PARKWAY SHEETS.dwg at Jun 30, 2021 10:16 am by toverburf
 Layout: Layout1(1)

no.	revision	by	date
1	SHEET REISSUED FOR DRIVEWAY REDESIGN	CAE	06/29/21

teague nall and perkins, inc
 5237 N. Riverside Drive, Suite 100
 Fort Worth, Texas 76137
 817.336.5773 ph 817.336.2813 fx
 www.tnpsc.com
 TBPELS: ENGR F-230; SURV 10011600, 10011601, 10194381
 GBPE: PEF007431; TBAE: BR 2673



scale
horiz
1"=20'
vert
n/a
date
Sep 2020



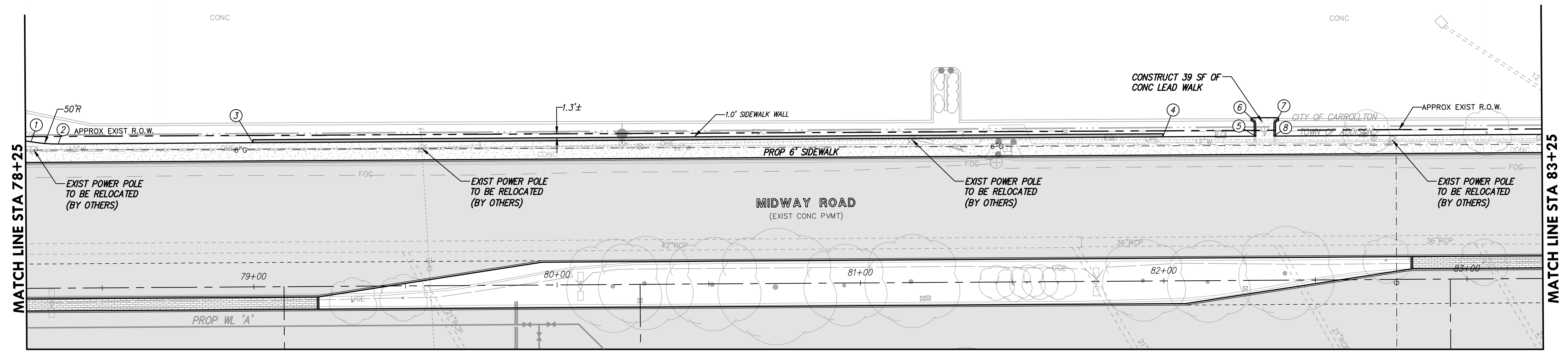
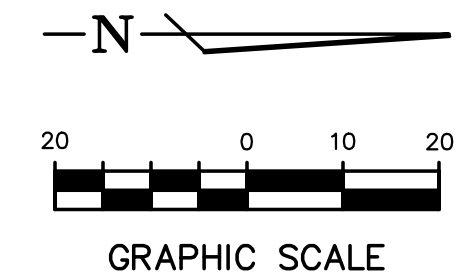
STATE OF TEXAS
 CHRIS A. EDWARDS
 118947
 LICENSED PROFESSIONAL ENGINEER
 Date: 6/29/2021

Town of Addison, Texas
 Construction Plans for
Midway Road Revitalization
 West Parkway Plan
 (Sta 63+50 to Sta 68+50)

tnp project
ADD12615
sheet
140
of
373

RELEASED FOR CONSTRUCTION

2001 MIDWAY RD.
ADDISON, TX 75006
HP MIDWAY MARKET LTD
HOUSEMAN PROPERTIES



MATCH LINE SHEET 166

POINT DATA						
#	DESC	STA	OFFSET	ELEV	TC/TP	COMMENT
1	PRC	78+26.88	48.30' LT	630.35	T/P	-
2	PT	78+35.81	47.50' LT	630.41	T/C	-
3	PI	79+00.01	47.50' LT	630.96	B/W	BEGIN SIDEWALK WALL
4	PI	82+00.00	47.50' LT	634.26	B/W	END SIDEWALK WALL
5	S/W	82+30.64	47.50' LT	634.61	T/P	-
6	S/W	82+29.16	53.56' LT	635.04	T/P	-
7	S/W	82+38.16	53.56' LT	635.01	T/P	-
8	S/W	82+36.64	47.50' LT	634.68	T/P	-

- NOTES:
- ALL DIMENSIONS AND RADI LABELS ARE TO BACK OF CURB, UNLESS OTHERWISE NOTED.
 - ALL DATA POINTS DRIVEWAYS, RAMPS, AND SIDEWALKS ARE TO FACE OF CURB OR WALL, UNLESS OTHERWISE NOTED.
 - SEE SHEETS 85-107 FOR ROADWAY AND MEDIAN DESIGN INFORMATION.
 - SEE SHEETS 173-178 FOR INTERSECTION AND SIDE STREET DESIGN INFORMATION.
 - SEE SHEETS 17-22 FOR LIMITS OF PAVEMENT, SIDEWALK, RET WALL, TREE, AND OTHER MISCELLANEOUS REMOVALS.
 - SEE SHEETS 17-22 FOR A DETAILED INVENTORY OF UTILITIES AND APPURTENANCES TO BE RELOCATED BY OTHERS.
 - SEE SHEET 220 FOR DETAILS OF PROPOSED SIDEWALK TRAIL WALL, SIDEWALK WALL, AND RETAINING WALLS, WITH STONE VENEER.

Drawing: C:\PROJECTS\ADD12615\cadd\sheet\172-144_MIDWAY PARKWAY SHEETS.dwg, Nov 04, 2020, 5:50pm by cedwards
Layout: Layout (1) - Area: 200-Base.dwg - XCP-PAVING-BASE.DWG - XCB-WATER-BASE.DWG - XCB-WATER-BASE.DWG - XCD-STORM-BASE.DWG - XCD-STORM-BASE.DWG - XCD-STRIPING.DWG - XCD-STRIPING.DWG - XCD-SEAL-PAVING.DWG - XCD-SEAL-PAVING.DWG

no.	revision	by	date

teague nall and perkins, inc
5237 N. Riverside Drive, Suite 100
Fort Worth, Texas 76137
817.336.5773 ph 817.336.2813 fx
www.tnpsc.com
TBPELS: ENGR F-230; SURV 10011600, 10011601, 10194381
GBPE: PEF007431; TBAE: BR 2673



scale
horiz
1"=20'
vert
n/a
date
Sep 2020

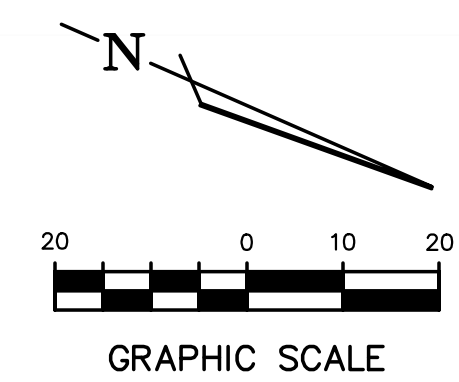


Professional Engineer Seal for Chris A. Edwards, License No. 118947, State of Texas. Signature of Chris A. Edwards, P.E., dated 9/29/2020.

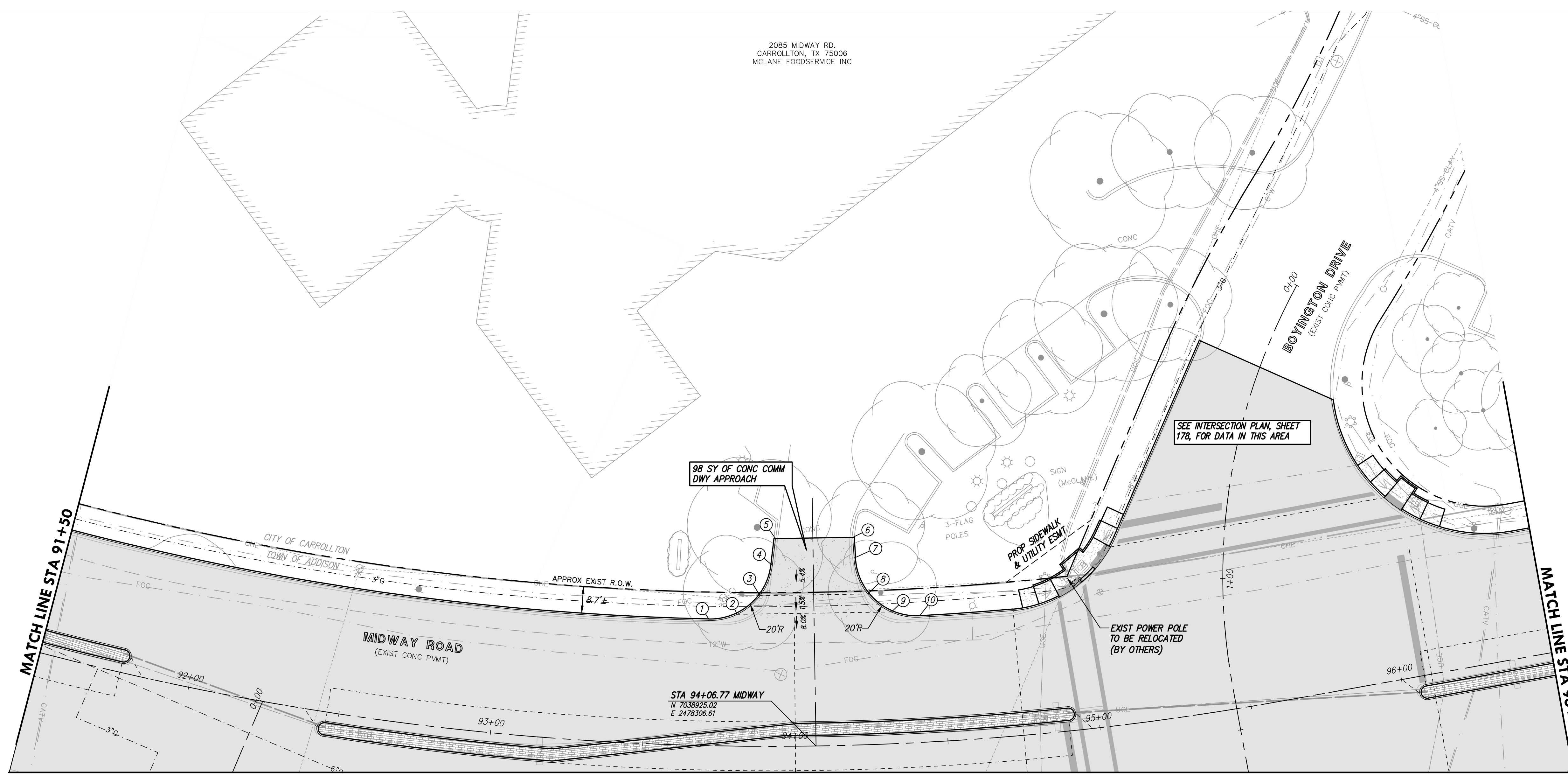
Town of Addison, Texas
Construction Plans for
Midway Road Revitalization
West Parkway Plan
(Sta 78+25 to Sta 83+25)

tnp project
ADD12615
sheet
143
of
373

RELEASED FOR CONSTRUCTION



2085 MIDWAY RD.
CARROLLTON, TX 75006
MCLANE FOODSERVICE INC



98 SY OF CONC COMM DWY APPROACH

SEE INTERSECTION PLAN, SHEET 178, FOR DATA IN THIS AREA

EXIST POWER POLE TO BE RELOCATED (BY OTHERS)

STA 94+06.77 MIDWAY
N 7038925.02
E 2478306.61

MATCH LINE SHEET 169

POINT DATA						
#	DESC	STA	OFFSET	ELEV	TC/TP	COMMENT
1	PCR	93+70.70	41.50' LT	646.50	T/C	Ø B/C
2	GB	93+80.37	43.15' LT	646.26	T/P	-
3	GB	93+88.22	49.33' LT	646.39	T/P	-
4	PCR	93+92.46	59.27' LT	646.98	T/P	-
5	PI	93+93.61	68.04' LT	647.49	T/P	MATCH EXIST
6	PI	94+20.89	68.02' LT	647.72	T/P	MATCH EXIST
7	PCR	94+21.07	61.22' LT	647.31	T/P	-
8	GB	94+25.47	49.32' LT	646.61	T/P	-
9	GB	94+33.33	43.14' LT	646.56	T/P	-
10	PCR	94+42.99	41.50' LT	646.94	T/C	Ø B/C

- NOTES:
- ALL DIMENSIONS AND RADI LABELS ARE TO BACK OF CURB, UNLESS OTHERWISE NOTED.
 - ALL DATA POINTS DRIVEWAYS, RAMPS, AND SIDEWALKS ARE TO FACE OF CURB OR WALL, UNLESS OTHERWISE NOTED.
 - SEE SHEETS 85-107 FOR ROADWAY AND MEDIAN DESIGN INFORMATION.
 - SEE SHEETS 173-178 FOR INTERSECTION AND SIDE STREET DESIGN INFORMATION.
 - SEE SHEETS 17-22 FOR LIMITS OF PAVEMENT, SIDEWALK, RET WALL, TREE, AND OTHER MISCELLANEOUS REMOVALS.
 - SEE SHEETS 17-22 FOR A DETAILED INVENTORY OF UTILITIES AND APPURTENANCES TO BE RELOCATED BY OTHERS.
 - SEE SHEET 220 FOR DETAILS OF PROPOSED SIDEWALK TRAIL WALL, SIDEWALK WALL, AND RETAINING WALLS, WITH STONE VENEER.

Drawing: C:\PROJECTS\ADD12615\cadd\sheet\172-144_MIDWAY_PARKWAY_SHEETS.dwg at Nov 04, 2020 - 5:54pm by cedwards
 Layout: Layout1.dwg - XBP-PAVING-BASE.DWG - XBP-WATER-BASE.DWG - XBP-SEWER-BASE.DWG - XBP-PAVING-BASE.DWG - XBP-WATER-BASE.DWG - XBP-SEWER-BASE.DWG - XBP-PAVING-BASE.DWG - XBP-WATER-BASE.DWG - XBP-SEWER-BASE.DWG - XBP-PAVING-BASE.DWG - XBP-WATER-BASE.DWG - XBP-SEWER-BASE.DWG

no.	revision	by	date

teague nall and perkins, inc
 5237 N. Riverside Drive, Suite 100
 Fort Worth, Texas 76137
 817.336.5773 ph 817.336.2813 fx
 www.tnpsc.com
 TBPELS: ENGR F-230; SURV 10011600, 10011601, 10194381
 GBPE: PEF007431; TBAE: BR 2673



scale
horiz
1"=20'
vert
n/a
date
Sep 2020



Professional Engineer Seal for Chris A. Edwards, License No. 118947, State of Texas. Signature of Chris A. Edwards, P.E., Date: 9/29/2020.

Town of Addison, Texas
 Construction Plans for
Midway Road Revitalization
 West Parkway Plan
 (Sta 91+50 to Sta 96+50)

tnp project
ADD12615
sheet
146
of
373

