



Town of Addison

**Network Survey
Control Manual**

February 1, 2021

INTRODUCTION

A network of 15 control points had in 2007 been established for the Town of Addison by the Texas Department of Transportation. Over time five of those monuments were destroyed.

Since that time the coordinates of those monuments have been superseded by newer adjustments/realizations and consequently, those coordinates are no longer up to date. The current Coordinate System as adopted by the National Geodetic Survey (NGS) is based on the North American Datum of 1983 (NAD83) 2011 Adjustment.

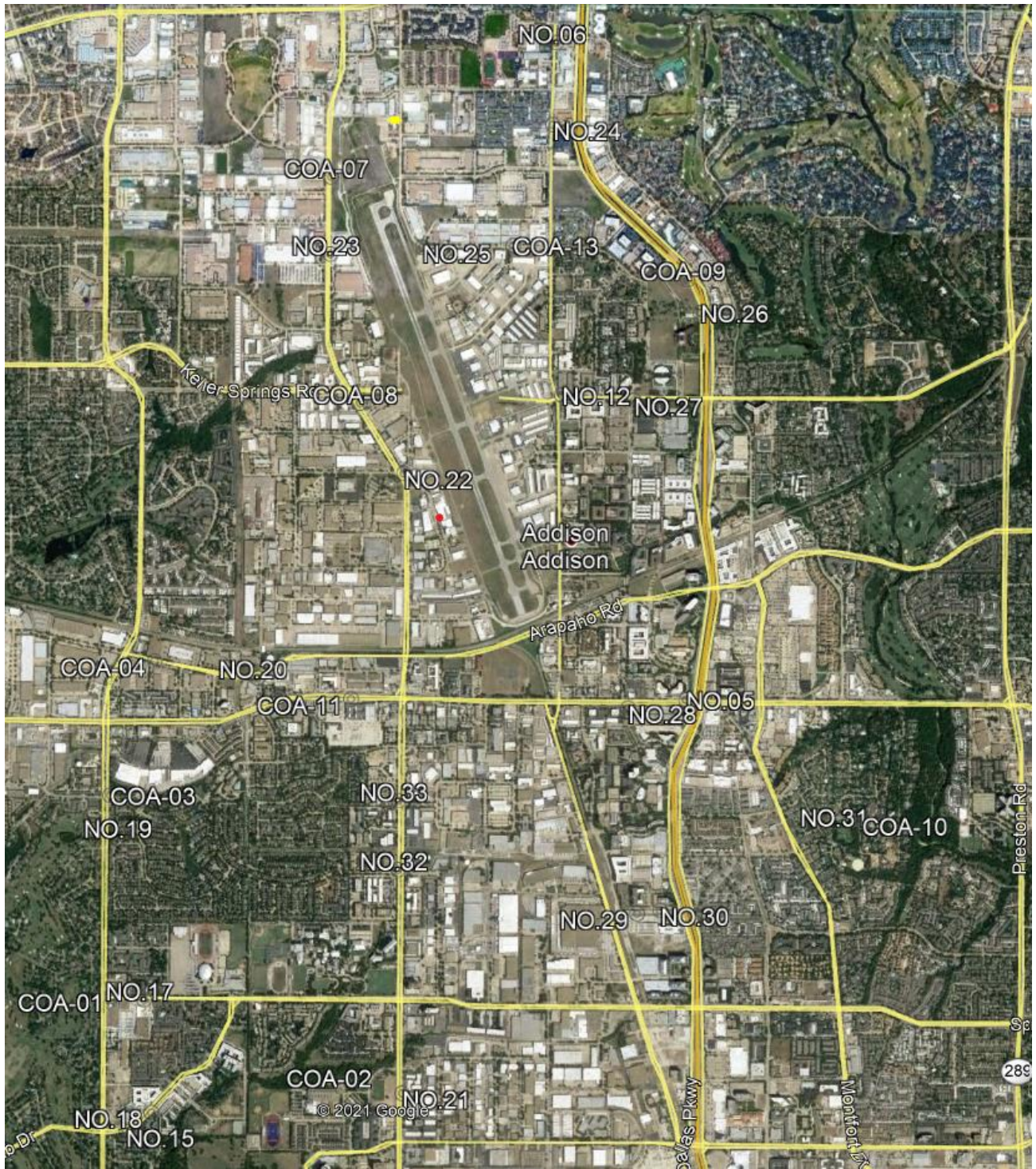
CobbFendley was retained by the Town of Addison to update the coordinates of the existing monuments to make them compatible with the latest NGS adjustment, to replace certain monuments that had been destroyed, and to add additional monuments so that each monument would be paired with another intervisible monument such that each monument would have an equally well located backsight to be used when conventional survey techniques were being utilized. In all 22 new monuments were built and surveyed, making the network a total of 32 monuments now.

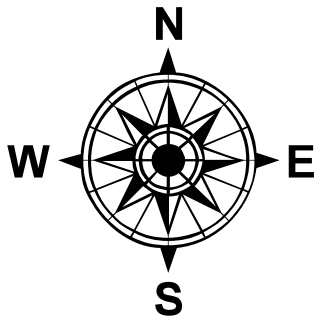
The process of establishing the precise location and coordinates of each monument was completed with the use of the Global Navigation Satellite System (GNSS) which is comprised of four different navigation satellite systems for the highest degree of accuracy possible. Standard deviations (error estimates) for each horizontal and vertical component of the monument locations were typically in the range of 0.01'. To establish these three-dimensional coordinates for each point, a Real Time Network (RTN) of precise GNSS reference stations, known as Smartnet (operated by Leica Geosystems) was used. Multiple individual observations (typically six) of five minutes duration were made over a period of several days to account for variations in the satellite orbits and atmospheric conditions, giving a more reliable weighted average of the observations.

Each Control Data Sheet is a one-page compendium of all the necessary information that a knowledgeable user (surveyor) will need to make use of these control points in day to day work. Location descriptions as well as sketches and photographs are included so that there will be no doubt as to the location of these points, and all the necessary meta data is also provided. A listing of geographic coordinates in addition to Texas Coordinate System of 1983 (State Plane Coordinates) allows the locations of these points to be easily imported into Addison's GIS.

The following tables give the coordinates of each monument in NAD83 (2011) Geographic Coordinates as well as Texas Coordinate System of 1983, North Texas Zone Grid Coordinates. Elevations are referenced to the NAVD88 Vertical Datum by applying vertical shifts calculated using Geoid 2012B to the NAD83 (2011) Ellipsoidal Heights. All values are displayed in US Survey Feet.

LOCATION MAP



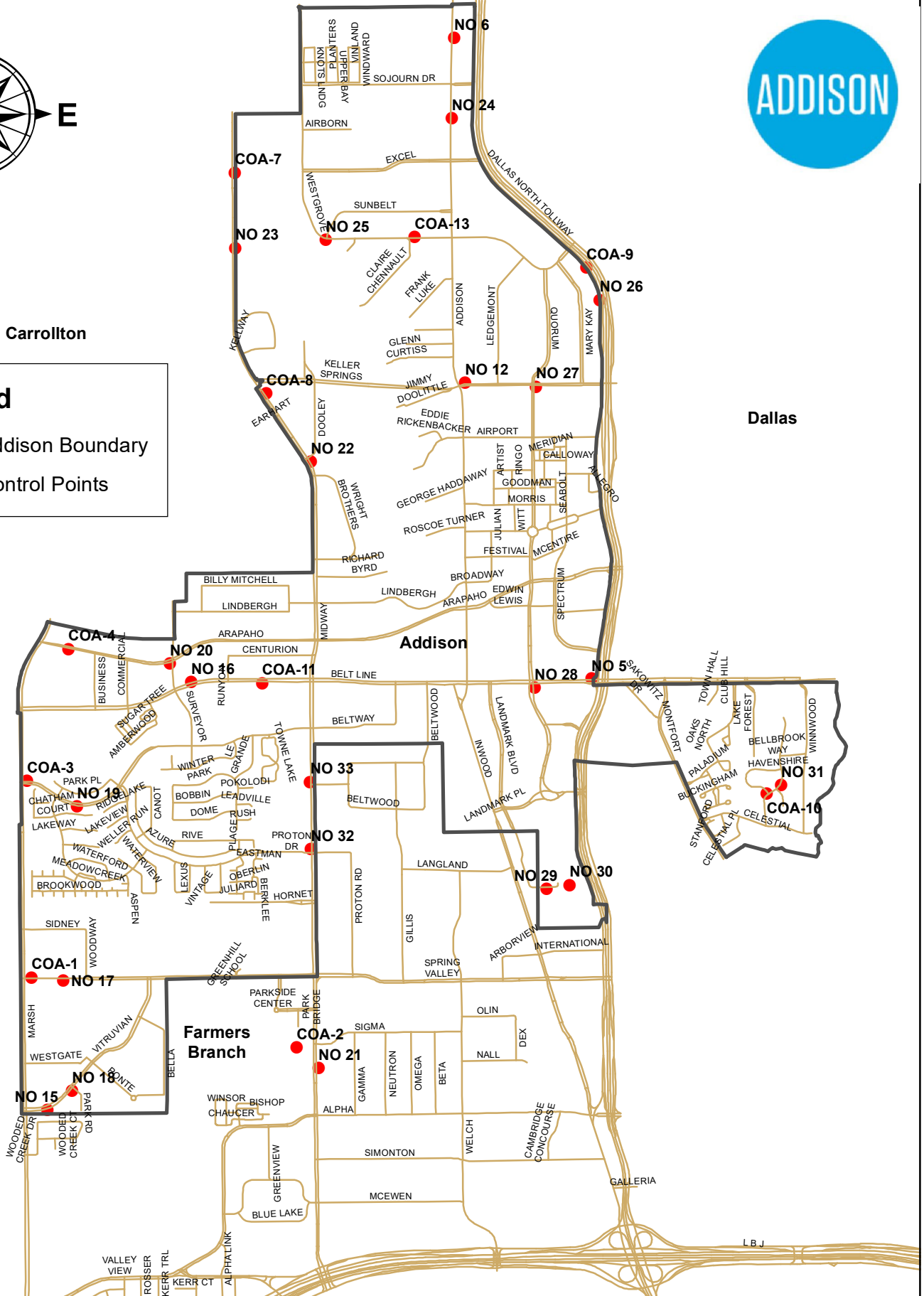


Carrollton

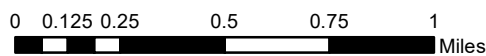
Dallas

Legend

- Addison Boundary
- Control Points



Town of Addison Control Network Map



NAD83 (2011 ADJUSTMENT) GEOGRAPHIC COORDNATES

Point Id	Latitude	Longitude	Ellip. Height	Std Deviation Lat	Std Deviation Lon	Std Deviation Ht
COA-01	32 56 24.22609 N	96 51 19.16342 W	485.70	0.004	0.006	0.007
COA-02	32 56 11.19922 N	96 50 24.15394 W	491.54	0.005	0.006	0.011
COA-03	32 56 58.73431 N	96 51 19.53985 W	497.99	0.003	0.006	0.008
COA-04	32 57 21.78957 N	96 51 10.42120 W	495.85	0.006	0.004	0.007
COA-07	32 58 44.99295 N	96 50 34.21702 W	551.95	0.007	0.002	0.005
COA-08	32 58 06.11003 N	96 50 28.37069 W	551.67	0.003	0.003	0.008
COA-09	32 58 27.29910 N	96 49 21.22236 W	528.48	0.004	0.006	0.003
COA-10	32 56 54.41283 N	96 48 45.51949 W	507.13	0.003	0.002	0.013
COA-11	32 57 15.28670 N	96 50 30.20461 W	524.62	0.003	0.001	0.005
COA-13	32 58 33.15329 N	96 49 56.94373 W	555.10	0.005	0.005	0.012
NO.05	32 57 15.10476 N	96 49 21.57029 W	547.21	0.006	0.006	0.006
NO.06	32 59 08.03958 N	96 49 48.04664 W	552.78	0.007	0.008	0.013
NO.12	32 58 07.44507 N	96 49 46.98432 W	551.88	0.003	0.006	0.019
NO.15	32 56 00.92359 N	96 51 16.35179 W	461.35	0.007	0.002	0.012
NO.16	32 57 15.66455 N	96 50 45.01057 W	509.57	0.005	0.004	0.014
NO.17	32 56 23.63199 N	96 51 12.59387 W	496.01	0.006	0.003	0.006
NO.18	32 56 04.22908 N	96 51 11.12906 W	466.60	0.002	0.004	0.009
NO.19	32 56 54.07539 N	96 51 09.15186 W	510.50	0.007	0.005	0.012
NO.20	32 57 18.93188 N	96 50 49.36568 W	508.36	0.006	0.006	0.015
NO.21	32 56 07.52082 N	96 50 19.75415 W	497.04	0.004	0.011	0.004
NO.22	32 57 54.02661 N	96 50 19.32151 W	560.96	0.008	0.007	0.007
NO.23	32 58 31.72597 N	96 50 34.36817 W	529.17	0.005	0.003	0.011
NO.24	32 58 53.92006 N	96 49 48.77379 W	559.33	0.007	0.006	0.006
NO.25	32 58 32.87693 N	96 50 15.50790 W	540.52	0.006	0.003	0.009
NO.26	32 58 21.58743 N	96 49 18.60901 W	525.75	0.003	0.003	0.007
NO.27	32 58 06.56437 N	96 49 32.20634 W	553.43	0.006	0.012	0.012
NO.28	32 57 13.69931 N	96 49 33.45613 W	563.04	0.005	0.006	0.009
NO.29	32 56 38.38256 N	96 49 31.63058 W	536.24	0.003	0.003	0.007
NO.30	32 56 38.93314 N	96 49 26.85501 W	535.63	0.005	0.003	0.010
NO.31	32 56 55.93836 N	96 48 42.38847 W	491.79	0.004	0.003	0.009
NO.32	32 56 45.95334 N	96 50 20.59281 W	512.26	0.004	0.003	0.012
NO.33	32 56 57.81785 N	96 50 20.52484 W	528.63	0.008	0.006	0.013

NAD83 (2011) TEXAS NORTH CENTRAL ZONE GRID COORDINATES

Point Id	Northing	Easting	Ortho. Height	Convergence Angle	Combined Scale Factor
COA-01	7028890.93	2473021.93	573.13	0 53 49	0.999851269
COA-02	7027648.34	2477729.77	578.79	0 54 19	0.999851114
COA-03	7032377.34	2472935.27	585.40	0 53 49	0.999850371
COA-04	7034719.16	2473675.60	583.22	0 53 54	0.999850281
COA-07	7043175.04	2476627.16	639.12	0 54 14	0.999847009
COA-08	7039253.93	2477187.12	638.86	0 54 17	0.999847277
COA-09	7041485.82	2482872.41	615.42	0 54 54	0.999848244
COA-10	7032148.78	2486064.02	594.03	0 55 13	0.999849971
COA-11	7034115.97	2477111.98	611.85	0 54 16	0.999848958
COA-13	7042028.92	2479820.59	642.16	0 54 34	0.999846932
NO.05	7034190.42	2482959.26	634.20	0 54 53	0.999847879
NO.06	7045566.08	2480522.31	639.78	0 54 39	0.999846835
NO.12	7039444.69	2480710.13	638.93	0 54 39	0.999847258
NO.15	7026540.06	2473298.38	548.79	0 53 51	0.999852659
NO.16	7034134.26	2475850.05	596.85	0 54 08	0.999849675
NO.17	7028839.66	2473582.63	583.42	0 53 53	0.999850781
NO.18	7026881.04	2473738.17	554.01	0 53 54	0.999852375
NO.19	7031920.44	2473827.66	597.88	0 53 55	0.999849813
NO.20	7034458.57	2475473.84	595.65	0 54 05	0.999849706
NO.21	7027282.58	2478110.55	584.27	0 54 22	0.999850887
NO.22	7038045.13	2477977.21	648.13	0 54 22	0.999846919
NO.23	7041834.26	2476635.44	616.36	0 54 14	0.999848182
NO.24	7044138.38	2480483.06	646.35	0 54 38	0.999846602
NO.25	7041975.94	2478239.93	627.64	0 54 24	0.999847632
NO.26	7040912.24	2483104.21	612.69	0 54 55	0.999848412
NO.27	7039375.74	2481970.29	640.43	0 54 48	0.999847190
NO.28	7034032.25	2481948.96	650.08	0 54 47	0.999847133
NO.29	7030466.13	2482161.37	623.29	0 54 48	0.999848720
NO.30	7030528.25	2482567.36	622.66	0 54 50	0.999848744
NO.31	7032307.21	2486328.29	578.67	0 55 15	0.999850691
NO.32	7031164.89	2477977.68	599.48	0 54 21	0.999849799
NO.33	7032363.84	2477964.52	615.84	0 54 21	0.999848913

In addition, new control data sheets were created for each of the 32 monuments, with sketches, color photographs and location descriptions. These data sheets and a scale able map showing these locations accompany this report.

TOWN OF ADDISON CONTROL DATA SHEET

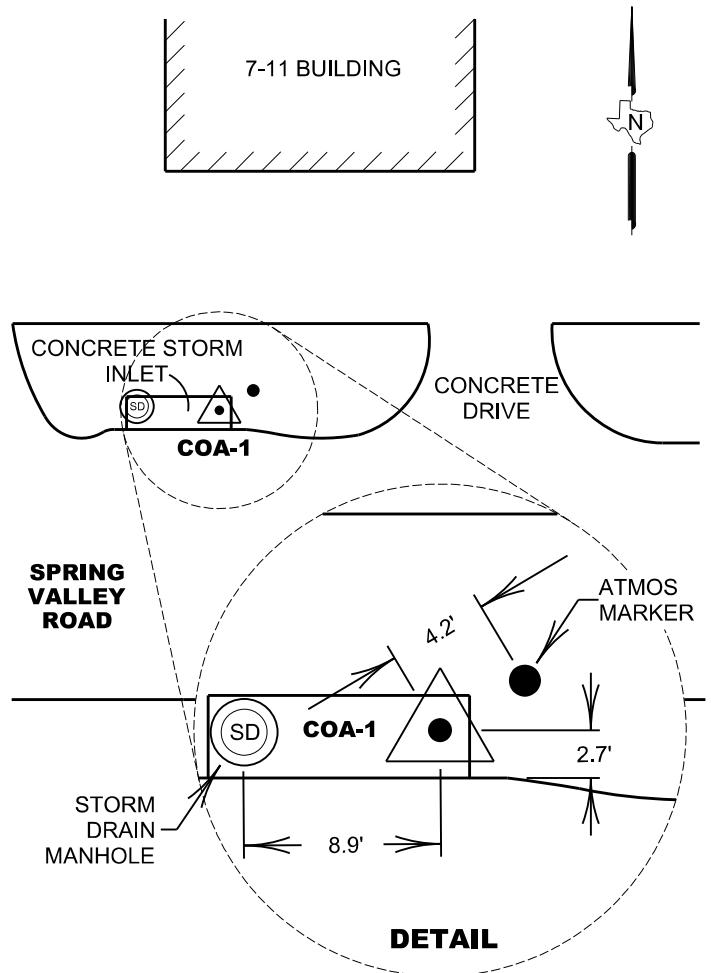
Distance & Direction to Reference & Azimuth Marks			Station Name: COA-1	Surveyor: James B. Gillis, R.P.L.S.
Reference Mark	Direction	Distance (feet)	Type: 2" Brass Disk Stamped "TXDOT COA-1 GPS"	
1) Storm Drain MH	West	8.9'	Survey Method: GNSS <input checked="" type="checkbox"/> TRAV <input type="checkbox"/> OTHER <input type="checkbox"/>	
2) Back of Curb	South	2.7'	Combined Scale Factor: 0.999851269	Date: February 1, 2021
3) ATMOS Gas Marker	East	4.2'	Coordinate System NAD83 (2011) Adjustment	Coordinates (U.S. Survey Feet)
Azimuth Mark	Grid Azimuth	Grid Distance	Elevation NAVD88 Calculated Using Geoid 12B	
NO 17	95°13'26"	563.03'	State: Texas Zone: North Central Code: 4202	N: 7028890.93 E: 2473021.93 573.13'



Geodetic Data	Position: NAD83 (2011)		Standard Deviation
	Latitude:	32°56'24.22609" North	0.004'
	Longitude:	96°51'19.16342" West	0.006'
	Ellipsoid Height:	485.70'	0.007'

Approximate Location:
 Located at the Northeast corner of a concrete Storm Inlet, 110' +/- East from the intersection of Marsh Lane and Spring Valley Road, 970' +/- West from the intersection of Woodway Drive and Spring Valley Road.

FIELD SKETCH



NOT TO SCALE



FACING EAST



FACING WEST

TOWN OF ADDISON CONTROL DATA SHEET

Distance & Direction to Reference & Azimuth Marks			Station Name: COA-2	Surveyor: James B. Gillis, R.P.L.S.
Reference Mark	Direction	Distance (feet)	Type: 2" Brass Disk Stamped "TXDOT COA-2 GPS"	
1) Storm Drain MH	Southwest	2.9'	Survey Method: GNSS <input checked="" type="checkbox"/> TRAV <input type="checkbox"/> OTHER <input type="checkbox"/>	
2) Back of Curb	Northwest	3.1'	Combined Scale Factor: 0.999851114	Date: February 1, 2021
3) Light Pole	Southwest	30.4'	Coordinate System NAD83 (2011) Adjustment	Coordinates (U.S. Survey Feet)
Azimuth Mark	Grid Azimuth	Grid Distance	Elevation NAVD88 Calculated Using Geoid 12B	
NO 21	133°50'53"	527.99'	State: Texas Zone: North Central Code: 4202	N: 7027648.34 E: 2477729.77 578.79'



Geodetic Data	Position: NAD83 (2011)		Standard Deviation
	Latitude:	32°56'11.19922" North	0.005'
	Longitude:	96°50'24.15394" West	0.006'
	Ellipsoid Height:	491.54'	0.011'

Approximate Location:

Located at the Southeast corner of a concrete Storm Inlet, within the southerly Right-of-Way line of Sigma Drive and being 269' +/- West from the intersection of Midway Road and Sigma Drive.

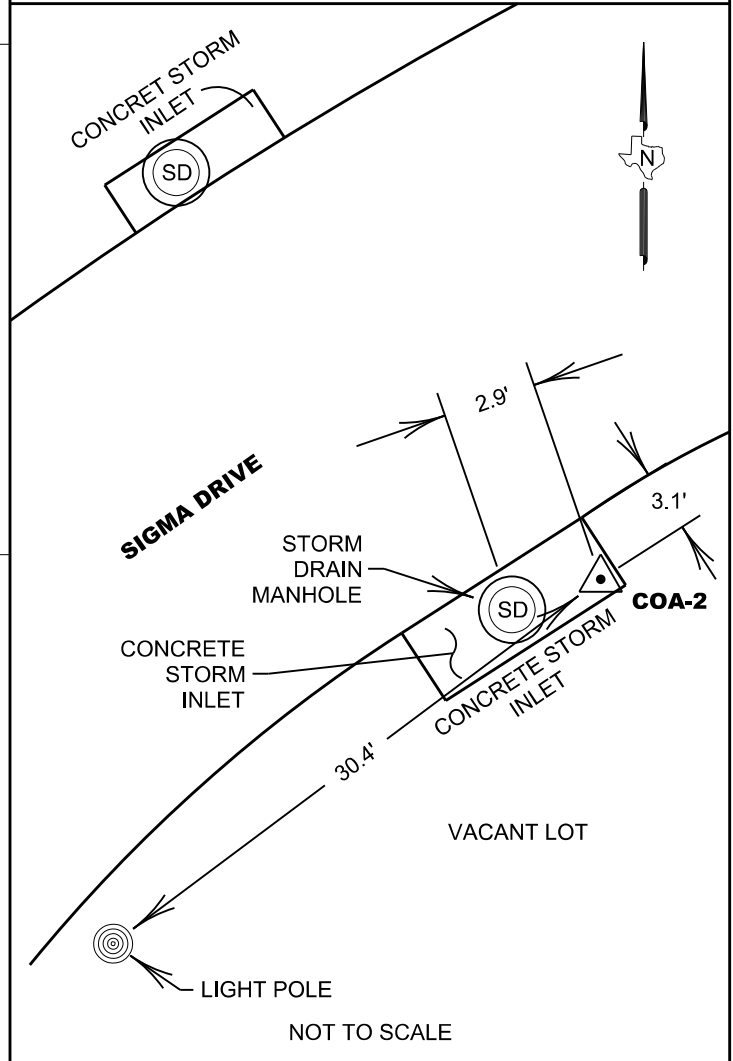


FACING EAST



FACING WEST

FIELD SKETCH



TOWN OF ADDISON CONTROL DATA SHEET

Distance & Direction to Reference & Azimuth Marks			Station Name: COA-3	Surveyor: James B. Gillis, R.P.L.S.
Reference Mark	Direction	Distance (feet)	Type: 2" Brass Disk Stamped "TXDOT COA-3 GPS"	
1) Fire Hydrant	West	31.3'	Survey Method: GNSS <input checked="" type="checkbox"/> TRAV <input type="checkbox"/> OTHER <input type="checkbox"/>	
2) Storm Drain MH	West	19.4'	Combined Scale Factor: 0.999850371	Date: February 1, 2021
3) Back of Curb	South	2.6'	Coordinate System NAD83 (2011) Adjustment	Coordinates (U.S. Survey Feet)
Azimuth Mark	Grid Azimuth	Grid Distance	Elevation NAVD88 Calculated Using Geoid 12B	
NO 19	117°06'44"	1,002.55'	State: Texas Zone: North Central Code: 4202	N: 7032377.34 E: 2472935.27 585.40'

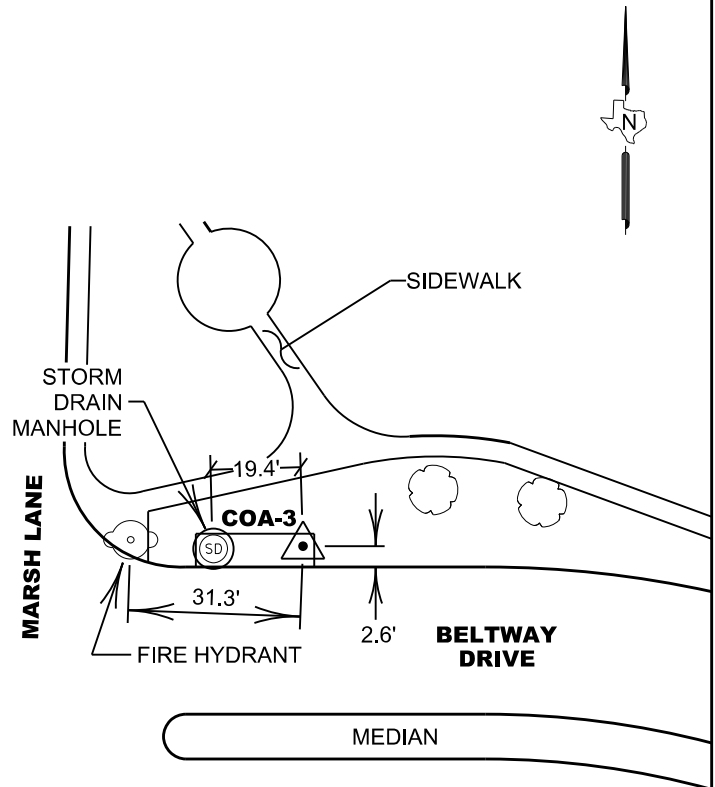


Geodetic Data	Position: NAD83 (2011)		Standard Deviation
	Latitude:	32°56'58.73431" North	0.003'
	Longitude:	96°51'19.53985" West	0.006'
Ellipsoid Height:		497.99'	0.008'

Approximate Location:

Located on the Northeast corner of a concrete Storm Inlet, 45' +/- from the intersection of Marsh Lane and Beltway Drive, 593' +/- from the intersection of Les Lacs Avenue and Beltway Drive.

FIELD SKETCH



NOT TO SCALE



COA-3
FACING EAST



COA-3
FACING WEST

TOWN OF ADDISON CONTROL DATA SHEET

Distance & Direction to Reference & Azimuth Marks			Station Name: COA-4	Surveyor: James B. Gillis, R.P.L.S.
Reference Mark	Direction	Distance (feet)	Type: 2" Brass Disk Stamped "TXDOT COA-4 GPS"	
1) Back of Curb	North	0.5'	Survey Method: GNSS <input checked="" type="checkbox"/> TRAV <input type="checkbox"/> OTHER <input type="checkbox"/>	
2) Light Pole	West	19.9'	Combined Scale Factor: 0.999850281	Date: February 1, 2021
3) Storm Drain MH	East	2.1'	Coordinate System NAD83 (2011) Adjustment	Coordinates (U.S. Survey Feet)
Azimuth Mark	Grid Azimuth	Grid Distance	Elevation NAVD88 Calculated Using Geoid 12B	
NO 20	98°14'43"	1,817.02'	State: Texas Zone: North Central Code: 4202	N: 7034719.16 E: 2473675.60 583.22'



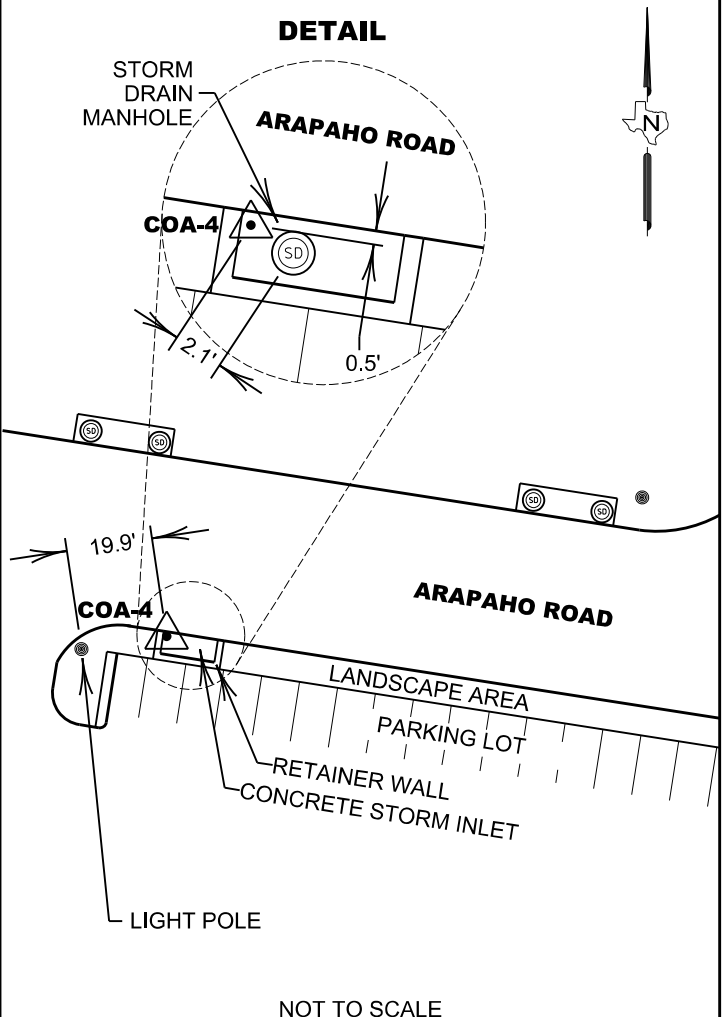
Geodetic Data	Position: NAD83 (2011)		Standard Deviation
	Latitude: 32°57'21.78957" North		0.006'
	Longitude: 96°51'10.42120" West		0.004'
	Ellipsoid Height: 495.85'		0.007'

Approximate Location:

Located at the Northwest corner of a concrete Drain Inlet along the southerly Right-of-Way line of Arapaho Road, 450' +/- East of the intersection of Marsh Lane and Arapaho Road, 458' +/- West of the intersection of Arapaho Road and Business Avenue.

FIELD SKETCH

DETAIL



NOT TO SCALE



FACING EAST



FACING WEST

TOWN OF ADDISON CONTROL DATA SHEET

Distance & Direction to Reference & Azimuth Marks			Station Name: COA-7	Surveyor: James B. Gillis, R.P.L.S.
Reference Mark	Direction	Distance (feet)	Type: 2" Brass Disk Stamped "TXDOT COA-7 GPS"	
1) 6' Chain Link Fence	East	8.2'	Survey Method: <input checked="" type="checkbox"/> GNSS <input checked="" type="checkbox"/> TRAV <input type="checkbox"/> OTHER <input type="checkbox"/>	
2) Storm Drain MH	North	3.6'	Combined Scale Factor: 0.999847009	Date: February 1, 2021
3) Back of Curb	West	2.7'	Coordinate System NAD83 (2011) Adjustment	Coordinates (U.S. Survey Feet)
Azimuth Mark	Grid Azimuth	Grid Distance	Elevation NAVD88 Calculated Using Geoid 12B	
NO 23	179°38'47"	1,340.81'	State: Texas Zone: North Central Code: 4202	N: 7043175.04 E: 2476627.16 639.12'

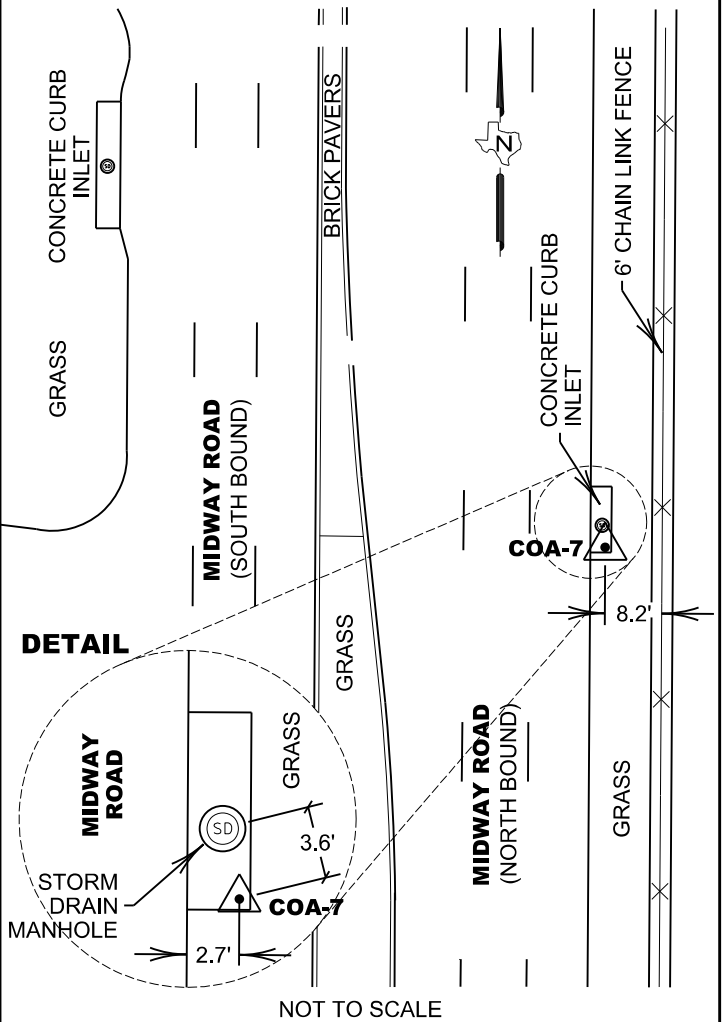


Geodetic Data	Position: NAD83 (2011)		Standard Deviation
	Latitude:	32°58'44.99295" North	0.007'
	Longitude:	96°50'34.21702" West	0.002'
	Ellipsoid Height:	551.95'	0.005'

Approximate Location:

Located at the Southeast corner of a concrete Curb Inlet, 190.0' +/- North of the intersection of Skyline Drive and Midway Road, 1,390.0' +/- South of the intersection of Belmeade Drive and Midway Road.

FIELD SKETCH



FACING NORTH



FACING SOUTH

NOT TO SCALE

TOWN OF ADDISON CONTROL DATA SHEET

Distance & Direction to Reference & Azimuth Marks			Station Name: COA-8	Surveyor: James B. Gillis, R.P.L.S.
Reference Mark	Direction	Distance (feet)	Type: 2" Brass Disk Stamped "TXDOT COA-8 GPS"	
1) Storm Drain MH	Southeast	4.9'	Survey Method: <input checked="" type="checkbox"/> GNSS <input checked="" type="checkbox"/> TRAV <input type="checkbox"/> OTHER <input type="checkbox"/>	
2) Back of Curb	Southwest	2.6'	Combined Scale Factor: 0.999847277	Date: February 1, 2021
3) Light Pole	East	18.5'	Coordinate System NAD83 (2011) Adjustment	Coordinates (U.S. Survey Feet)
Azimuth Mark	Grid Azimuth	Grid Distance	Elevation NAVD88 Calculated Using Geoid 12B	
NO 22	146°49'51"	1,444.11'	State: Texas	
			Zone: North Central	N: 7039253.93
			Code: 4202	E: 2477187.12
				638.86'

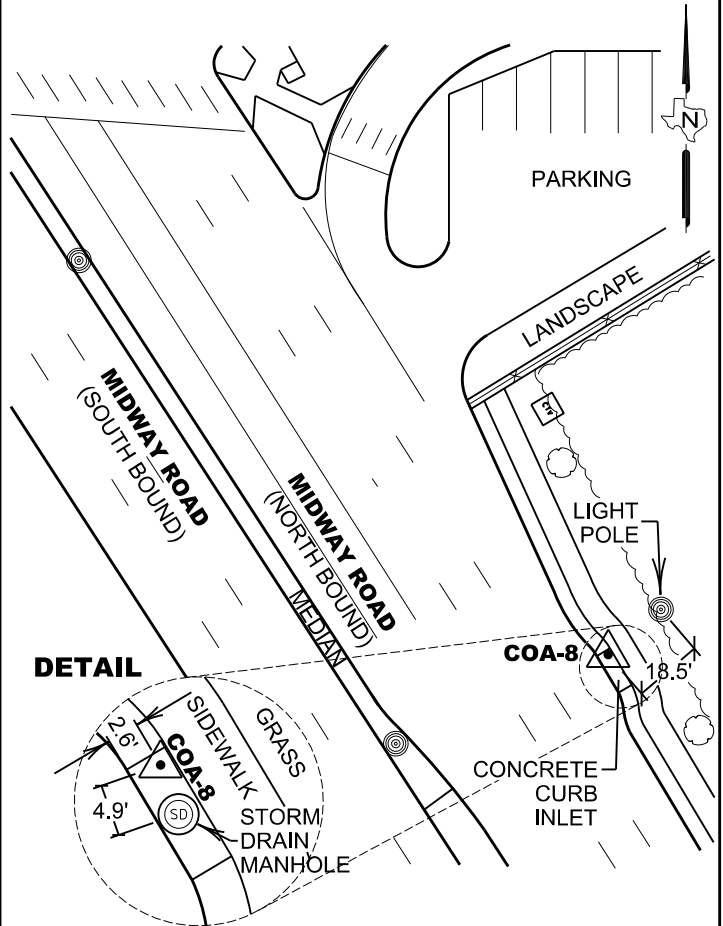


Geodetic Data	Position: NAD83 (2011)		Standard Deviation
	Latitude:	32°58'06.11003" North	0.003'
	Longitude:	96°50'28.37069" West	0.003'
	Ellipsoid Height:	551.67'	0.008'

Approximate Location:

Located at the Northeast corner of a concrete Curb Inlet, 200.0' +/- Southeast of the intersection of Keller Spring Road and Midway Road, 427' +/- Northwest of the intersection of Earhart Drive and Midway Road.

FIELD SKETCH



NOT TO SCALE



FACING NORTHWEST



FACING SOUTHEAST

TOWN OF ADDISON CONTROL DATA SHEET

Distance & Direction to Reference & Azimuth Marks			Station Name: COA-9	Surveyor: James B. Gillis, R.P.L.S.
Reference Mark	Direction	Distance (feet)	Type: 2" Brass Disk Stamped "TXDOT COA-9 GPS"	
1) Fiber Optic Marker	Northwest	26.7'	Survey Method: GNSS <input checked="" type="checkbox"/> TRAV <input type="checkbox"/> OTHER <input type="checkbox"/>	
2) Storm Drain MH	Southeast	4.5'	Combined Scale Factor: 0.999848244	Date: February 1, 2021
3) Back of Curb	Northeast	3.1'	Coordinate System NAD83 (2011) Adjustment	Coordinates (U.S. Survey Feet)
Azimuth Mark	Grid Azimuth	Grid Distance	Elevation NAVD88 Calculated Using Geoid 12B	
NO 26	157°59'42"	618.65'	State: Texas Zone: North Central Code: 4202	N: 7041485.82 E: 2482872.41 615.42

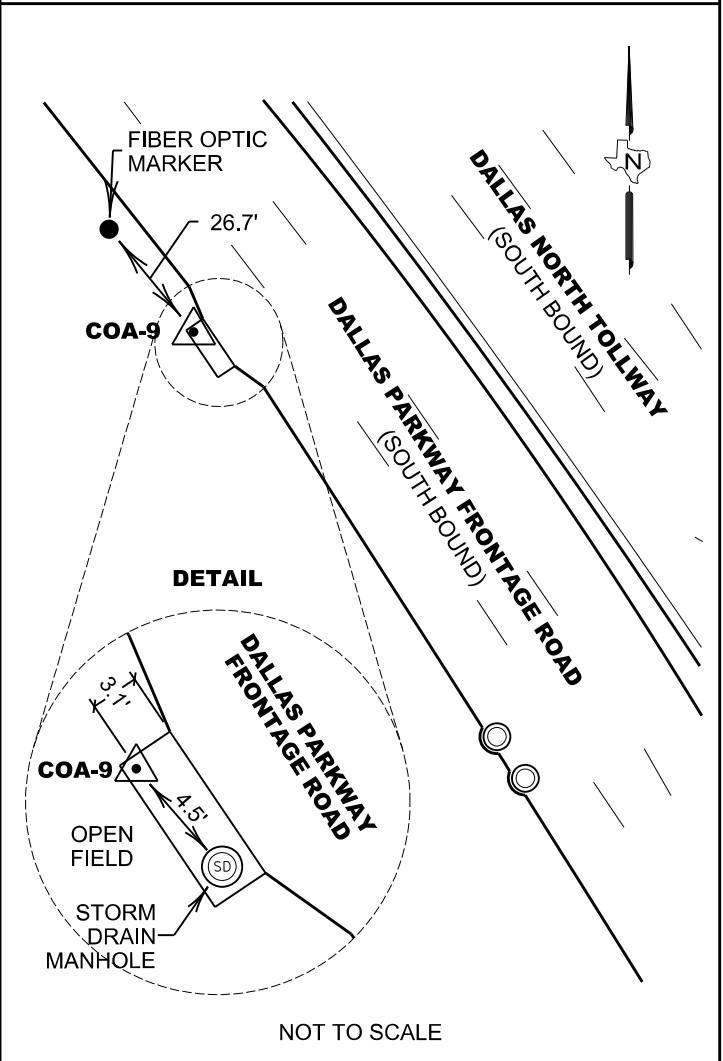


Geodetic Data	Position: NAD83 (2011)		Standard Deviation
	Latitude:	32°58'27.29910" North	0.004'
	Longitude:	96°49'21.22236" West	0.006'
	Ellipsoid Height:	528.48'	0.003'

Approximate Location:

Located at the Northeast corner of a concrete Curb Inlet, 200.0' +/- from the Southeast of the intersection of Westgrove Place and the South bound frontage road of Dallas North Tollway, 915.0' +/- from the Northeast driveway of Mary Kay Property Building.

FIELD SKETCH



FACING NORTHWEST



FACING SOUTHEAST

TOWN OF ADDISON CONTROL DATA SHEET

Distance & Direction to Reference & Azimuth Marks			Station Name: COA-10	Surveyor: James B. Gillis, R.P.L.S.
Reference Mark	Direction	Distance (feet)	Type: 2" Brass Disk Stamped "TXDOT COA-10 GPS"	
1) Storm Sewer MH	South	21.7'	Survey Method: <input checked="" type="checkbox"/> GNSS <input checked="" type="checkbox"/> TRAV <input type="checkbox"/> OTHER <input type="checkbox"/>	
2) Storm Drain MH	Northwest	7.5'	Combined Scale Factor: 0.999849971	Date: February 1, 2021
3) Stop Sign	South	11.2'	Coordinate System NAD83 (2011) Adjustment	Coordinates (U.S. Survey Feet)
Azimuth Mark	Grid Azimuth	Grid Distance	Elevation NAVD88 Calculated Using Geoid 12B	
NO 31	59°03'24"	308.12'	State: Texas Zone: North Central Code: 4202	N: 7032148.78 E: 2486064.02 594.03'

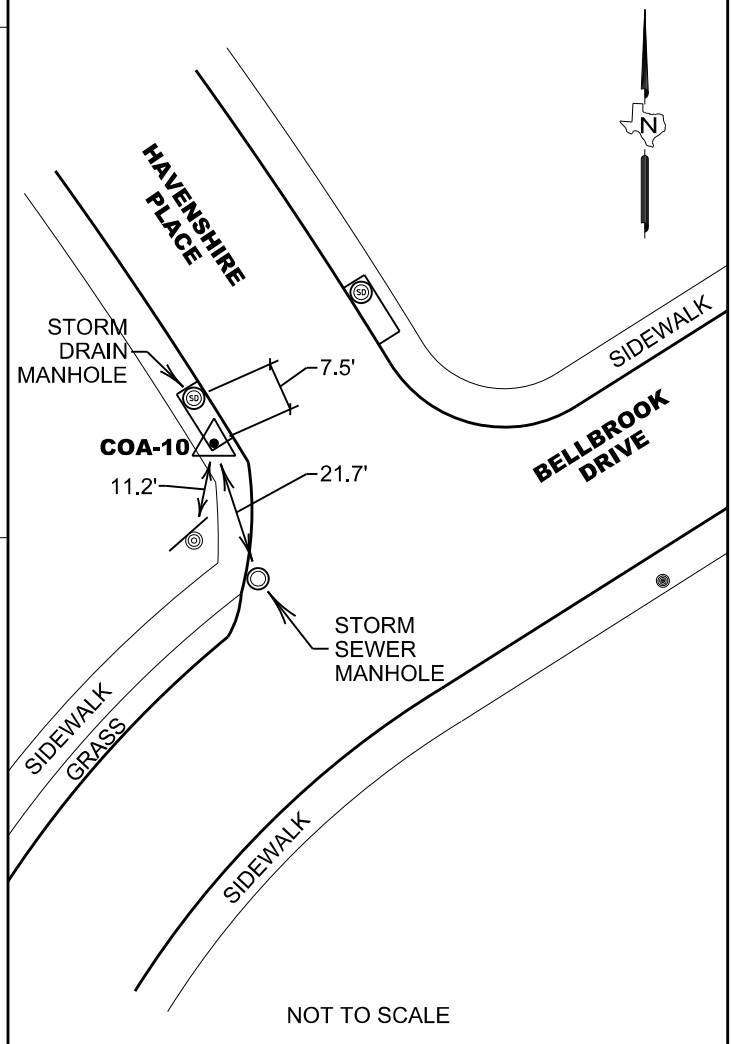


Geodetic Data	Position: NAD83 (2011)		Standard Deviation
	Latitude:	32°56'54.41283" North	0.003'
	Longitude:	96°48'45.51949" West	0.002'
	Ellipsoid Height:	507.13'	0.013'

Approximate Location:

Located at the Southwest corner of a concrete Drain Inlet at the Southwest corner of Havenshire Place and Bellbrook Drive, 563' +/- North of the intersection of Bellbrook Drive and Celestial Road.

FIELD SKETCH



FACING NORTHEAST



FACING SOUTHWEST

TOWN OF ADDISON CONTROL DATA SHEET

Distance & Direction to Reference & Azimuth Marks			Station Name: COA-11	Surveyor: James B. Gillis, R.P.L.S.
Reference Mark	Direction	Distance (feet)	Type: 2" Brass Disk Stamped "TXDOT COA-11 GPS"	
1) Storm Drain MH	West	11.5'	Survey Method: <input checked="" type="checkbox"/> GNSS <input type="checkbox"/> TRAV <input type="checkbox"/> OTHER <input type="checkbox"/>	
2) Back of Curb	North	2.5'	Combined Scale Factor: 0.999848958	Date: February 1, 2021
3) Electric Cabinet	South	8.8'	Coordinate System NAD83 (2011) Adjustment	Coordinates (U.S. Survey Feet)
Azimuth Mark	Grid Azimuth	Grid Distance	Elevation NAVD88 Calculated Using Geoid 12B	
NO 16	270°49'50"	1,262.06'	State: Texas Zone: North Central Code: 4202	N: 7034115.97 E: 2477111.98 611.85'



Geodetic Data	Position: NAD83 (2011)		Standard Deviation
	Latitude: 32°57'15.28670" North		0.003'
	Longitude: 96°50'30.20461" West		0.001'
	Ellipsoid Height: 524.62'		0.005'

Approximate Location:

Located at the Southeast corner of a concrete Drain Inlet, 826' +/- West of the intersection of Midway Road and Belt Line Road, 70' +/- East of the intersection of Oak Street and Belt Line Road.

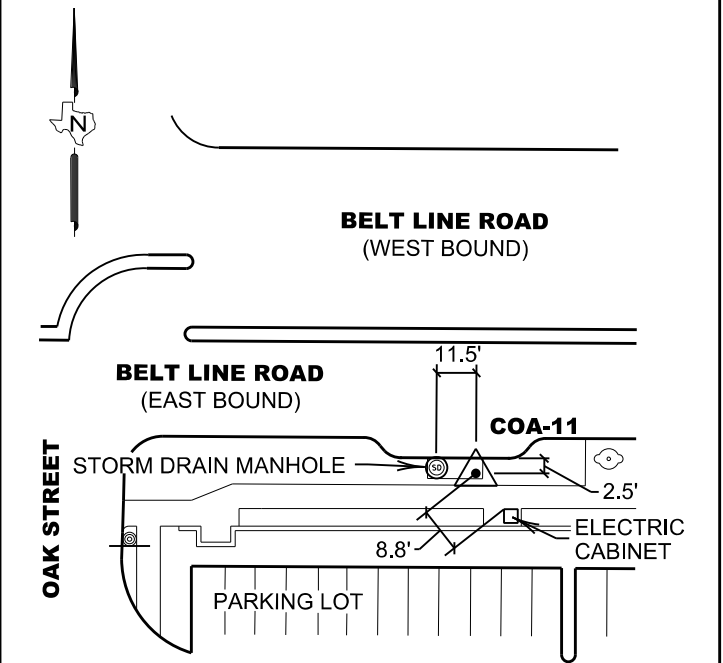
FIELD SKETCH



FACING EAST



FACING WEST



NOT TO SCALE

TOWN OF ADDISON CONTROL DATA SHEET

Distance & Direction to Reference & Azimuth Marks			Station Name: COA-13	Surveyor: James B. Gillis, R.P.L.S.
Reference Mark	Direction	Distance (feet)	Type: 2" Brass Disk Stamped "TXDOT COA-13 GPS"	
1) Museum Sign	Southeast	5.3'	Survey Method: <input checked="" type="checkbox"/> GNSS <input type="checkbox"/> TRAV <input type="checkbox"/> OTHER <input type="checkbox"/>	
2) Back of Curb	South	7.9'	Combined Scale Factor: 0.999846932	Date: February 1, 2021
3) Back of Curb	North	16.2'	Coordinate System NAD83 (2011) Adjustment	Coordinates (U.S. Survey Feet)
Azimuth Mark	Grid Azimuth	Grid Distance	Elevation NAVD88 Calculated Using Geoid 12B	
NO 25	268°04'48"	1,581.55'	State: Texas Zone: North Central Code: 4202	N: 7042028.92 E: 2479820.59 642.16'

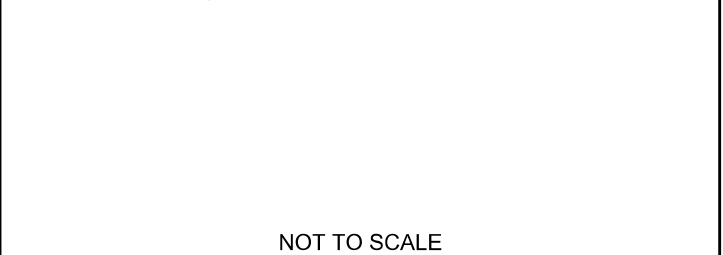
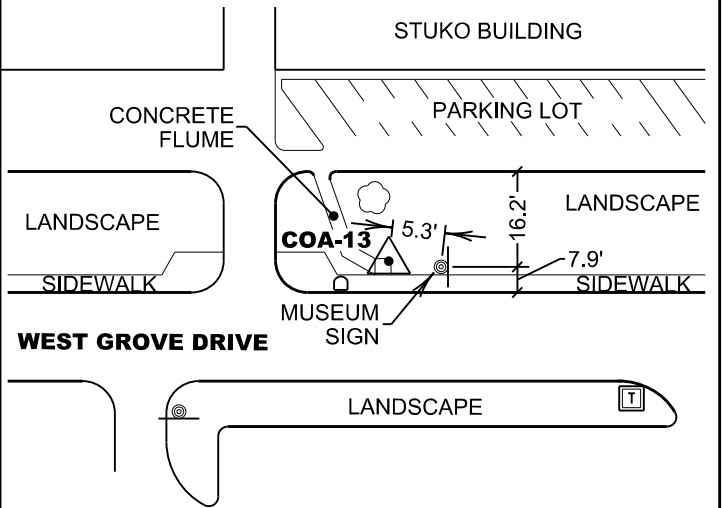


Geodetic Data	Position: NAD83 (2011)		Standard Deviation
	Latitude:	32°58'33.15329" North	0.005'
	Longitude:	96°49'56.94373" West	0.005'
	Ellipsoid Height:	555.10'	0.012'

Approximate Location:

Located at the Northeast corner of a concrete Drop Inlet, 80' +/- East of the intersection of Claire Chennault Drive and West Grove Drive, 630' West of the intersection of Addison Drive and West Grove Drive.

FIELD SKETCH



NOT TO SCALE



FACING EAST



FACING WEST

TOWN OF ADDISON CONTROL DATA SHEET

Distance & Direction to Reference & Azimuth Marks			Station Name: NO 5	Surveyor: James B. Gillis, R.P.L.S.
Reference Mark	Direction	Distance (feet)	Type: 3 1/2" Aluminum Disk Stamped "TOWN OF ADDISON NO 5"	
1) Storm Drain MH	West	4.5'	Survey Method: GNSS <input checked="" type="checkbox"/> TRAV <input type="checkbox"/> OTHER <input type="checkbox"/>	
2) Back of Curb	South	2.9'	Combined Scale Factor: 0.999847879	Date: February 1, 2021
3) Power Pole	Northwest	19.3'	Coordinate System NAD83 (2011) Adjustment	Coordinates (U.S. Survey Feet)
Azimuth Mark	Grid Azimuth	Grid Distance	Elevation NAVD88 Calculated Using Geoid 12B	
NO 28	261°06'08"	1,022.60'	State: Texas Zone: North Central Code: 4202	N: 7034190.42 E: 2482959.26 634.20'

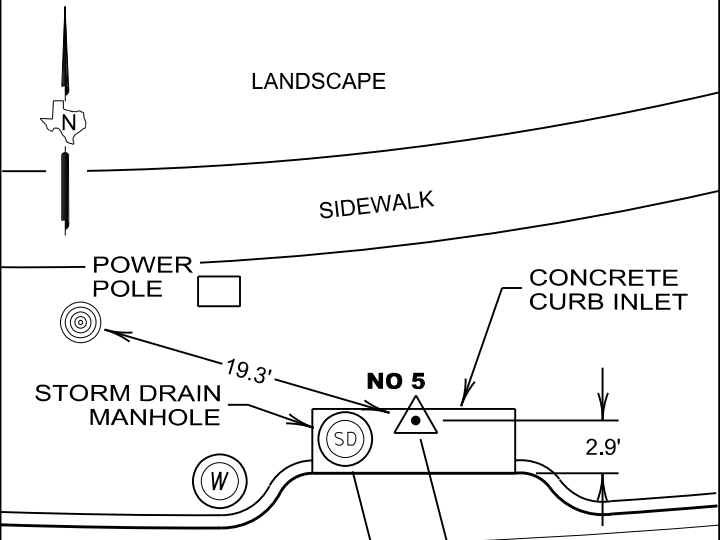
Geodetic Data	Position: NAD83 (2011)		Standard Deviation
	Latitude:	32°57'15.10477" North	0.006'
	Longitude:	96°49'21.57029" West	0.006'
Ellipsoid Height:		547.21'	0.006'

Approximate Location:

Located within the Northerly side of a concrete Storm Inlet, 125' +/- West from the intersection of the South Bound Lane of "Dallas Parkway Service Road" and Belt Line Road, 1,081' +/- East of the intersection of Quorum Drive and Belt Line Road.



FIELD SKETCH



FACING EAST



FACING WEST

BELT LINE ROAD
(WEST BOUND)

NOT TO SCALE

TOWN OF ADDISON CONTROL DATA SHEET

Distance & Direction to Reference & Azimuth Marks			Station Name: NO 6	Surveyor: James B. Gillis, R.P.L.S.
Reference Mark	Direction	Distance (feet)	Type: 3 1/2" Aluminum Disk Stamped "TOWN OF ADDISON NO 6"	
1) Storm Drain MH	South	7.6'	Survey Method: GNSS <input checked="" type="checkbox"/> TRAV <input type="checkbox"/> OTHER <input type="checkbox"/>	
2) Light Pole	North	27.9'	Combined Scale Factor: 0.999846835	Date: February 1, 2021
3) Sidewalk	East	8.1'	Coordinate System NAD83 (2011) Adjustment	Coordinates (U.S. Survey Feet)
Azimuth Mark	Grid Azimuth	Grid Distance	Elevation NAVD88 Calculated Using Geoid 12B	
NO 24	181°34'28"	1,428.25'	State: Texas Zone: North Central Code: 4202	N: 7045566.08 E: 2480522.31 639.78'

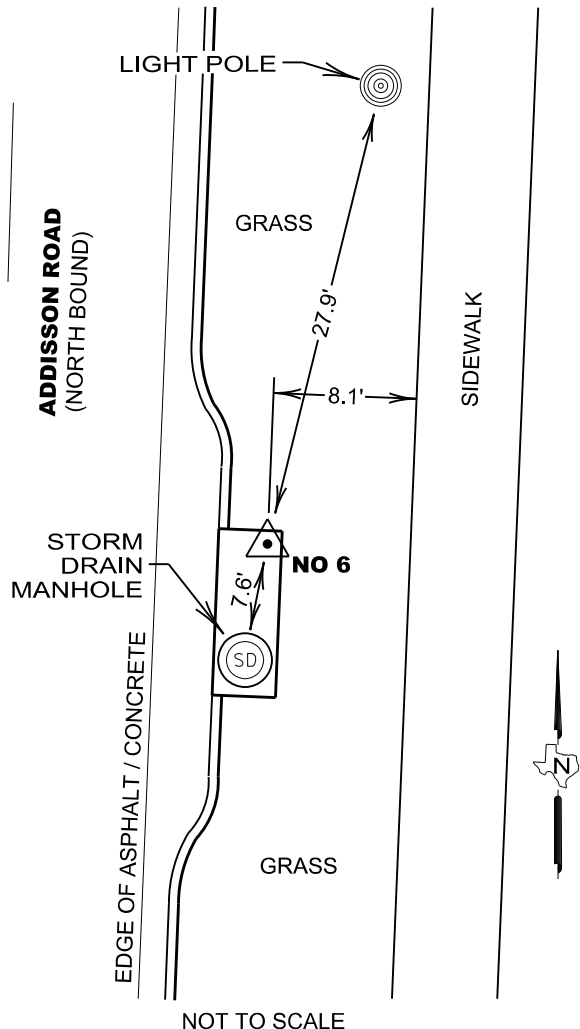


Geodetic Data	Position: NAD83 (2011)		Standard Deviation
	Latitude:	32°59'08.03959" North	0.007'
	Longitude:	96°49'48.04664" West	0.008'
	Ellipsoid Height:	552.78'	0.013'

Approximate Location:

Located at the Northeast corner of a concrete Drain Inlet along the easterly Right-of-Way of Addison Road, 1,690' +/- South of the intersection of Trinity Mills Road and Addison Road, 805' +/- North of the intersection of Sojourn Drive and Addison Road.

FIELD SKETCH



NOT TO SCALE



FACING NORTH



FACING SOUTH

TOWN OF ADDISON CONTROL DATA SHEET

Distance & Direction to Reference & Azimuth Marks			Station Name: NO 12	Surveyor: James B. Gillis, R.P.L.S.
Reference Mark	Direction	Distance (feet)	Type: 3 1/2" Aluminum Disk Stamped "TOWN OF ADDISON NO 12"	
1) Back of Curb	South	6.2'	Survey Method: GNSS <input checked="" type="checkbox"/> TRAV <input type="checkbox"/> OTHER <input type="checkbox"/>	
2) Power Pole	North	7.5'	Combined Scale Factor: 0.999847258	Date: February 1, 2021
3) Airport Sign	Northwest	11.4'	Coordinate System NAD83 (2011) Adjustment	Coordinates (U.S. Survey Feet)
Azimuth Mark	Grid Azimuth	Grid Distance	Elevation NAVD88 Calculated Using Geoid 12B	
NO 27	93°07'55"	1,262.04'	State: Texas Zone: North Central Code: 4202	N: 7039444.69 E: 2480710.13 638.93'

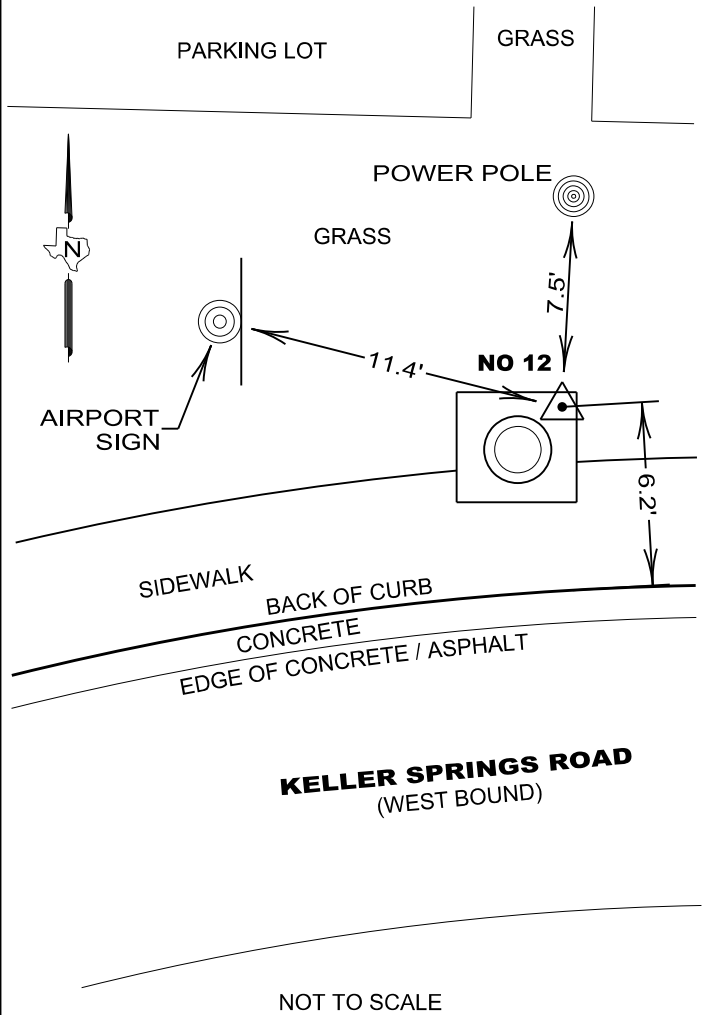


Geodetic Data	Position: NAD83 (2011)		Standard Deviation
	Latitude:	32°58'07.44507" North	0.003'
	Longitude:	96°49'46.98432" West	0.006'
	Ellipsoid Height:	551.88'	0.019'

Approximate Location:

Located at the Northeast corner of a concrete Vault, 75' +/- East of the intersection of Addison Road and Keller Springs Road, 575' +/- West of the intersection of Ledgesmont Lane and Keller Springs Road.

FIELD SKETCH



FACING EAST



FACING WEST

TOWN OF ADDISON CONTROL DATA SHEET

Distance & Direction to Reference & Azimuth Marks			Station Name: NO 15	Surveyor: James B. Gillis, R.P.L.S.
Reference Mark	Direction	Distance (feet)	Type: 3 1/2" Aluminum Disk Stamped "TOWN OF ADDISON NO 15"	
1) Storm Drain MH	West	9.7'	Survey Method: GNSS <input checked="" type="checkbox"/> TRAV <input type="checkbox"/> OTHER <input type="checkbox"/>	
2) Back of Curb	Northwest	2.8'	Combined Scale Factor: 0.999852659	Date: February 1, 2021
3) Vault	Southeast	6.8'	Coordinate System NAD83 (2011) Adjustment	Coordinates (U.S. Survey Feet)
Azimuth Mark	Grid Azimuth	Grid Distance	Elevation NAVD88 Calculated Using Geoid 12B	
NO 18	52°12'47"	556.50'	State: Texas Zone: North Central Code: 4202	N: 7026540.06 E: 2473298.38 548.79'

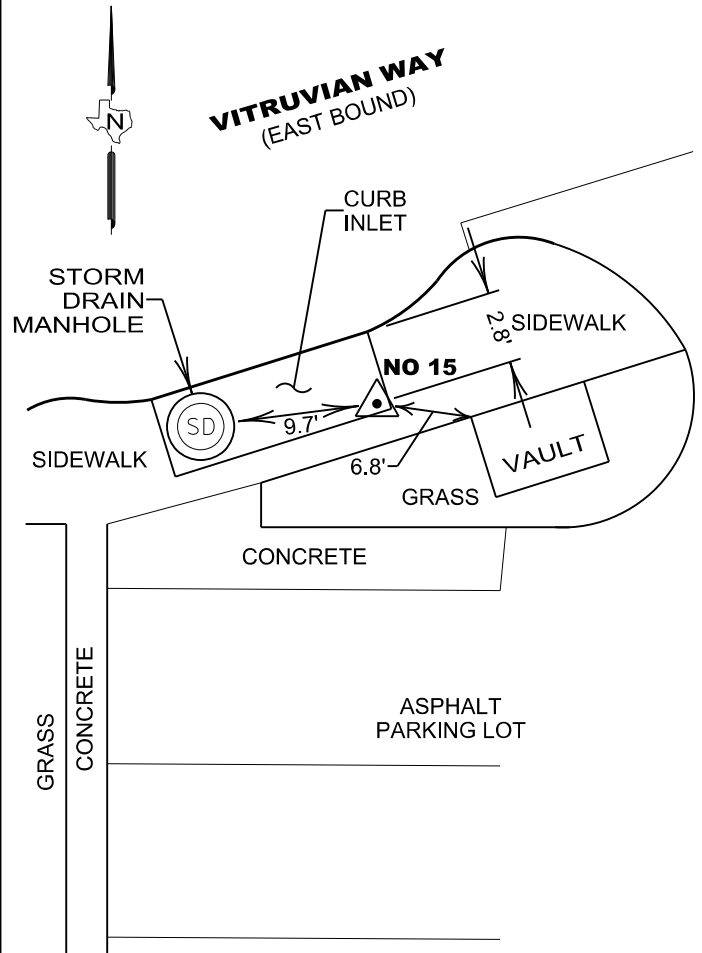


Geodetic Data	Position: NAD83 (2011)		Standard Deviation
	Latitude:	32°56'00.92360" North	0.007'
	Longitude:	96°51'16.35179" West	0.002'
	Ellipsoid Height:	461.35'	0.012'

Approximate Location:

Located at the Southeast corner of a concrete Curb Inlet, 370' +/- East of the intersection of Marsh Lane and Vitruvian Way, 1,126' +/- Southwest of the intersection of Ponte Avenue and Vitruvian Way.

FIELD SKETCH



NOT TO SCALE



FACING EAST



FACING WEST

TOWN OF ADDISON CONTROL DATA SHEET

Distance & Direction to Reference & Azimuth Marks			Station Name: NO 16	Surveyor: James B. Gillis, R.P.L.S.
Reference Mark	Direction	Distance (feet)	Type: 3 1/2" Aluminum Disk Stamped "TOWN OF ADDISON NO 16"	
1) Storm Drain MH	West	19.9'	Survey Method: GNSS <input checked="" type="checkbox"/> TRAV <input type="checkbox"/> OTHER <input type="checkbox"/>	
2) Back of Curb	South	2.6'	Combined Scale Factor: 0.999849675	Date: February 1, 2021
3) ONCOR Vault	East	6.5'	Coordinate System NAD83 (2011) Adjustment	Coordinates (U.S. Survey Feet)
Azimuth Mark	Grid Azimuth	Grid Distance	Elevation NAVD88 Calculated Using Geoid 12B	
COA-11	90°49'50"	1,262.06'	State: Texas	N: 7034134.26
			Zone: North Central	E: 2475850.05
			Code: 4202	596.85'

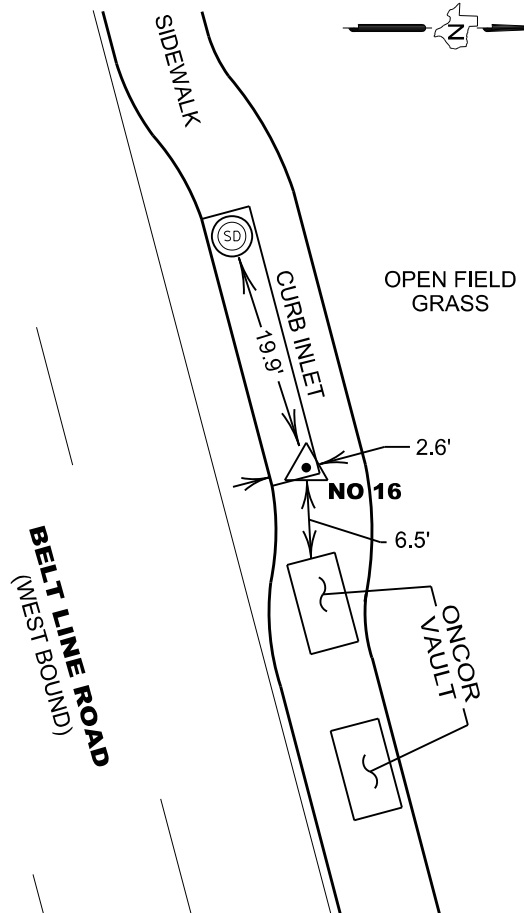


Geodetic Data	Position: NAD83 (2011)		Standard Deviation
	Latitude:	32°57'15.66455" North	0.005'
	Longitude:	96°50'45.01057" West	0.004'
	Ellipsoid Height:	509.57'	0.014'

Approximate Location:

Located at the Northeast corner of a concrete Curb Inlet, 305' +/- East of the intersection of Surveyor Boulevard and Belt Line Road, 661' +/- West of the intersection of Runyon Road and Belt Line Road.

FIELD SKETCH



NOT TO SCALE



FACING EAST



FACING WEST

TOWN OF ADDISON CONTROL DATA SHEET

Distance & Direction to Reference & Azimuth Marks			Station Name: NO 17	Surveyor: James B. Gillis, R.P.L.S.
Reference Mark	Direction	Distance (feet)	Type: 3 1/2" Aluminum Disk Stamped "TOWN OF ADDISON NO 17"	
1) Storm Drain MH	Northwest	1.5'	Survey Method: GNSS <input checked="" type="checkbox"/> TRAV <input type="checkbox"/> OTHER <input type="checkbox"/>	
2) Back of Curb	North	2.7'	Combined Scale Factor: 0.999850781	Date: February 1, 2021
3) Power Pole	West	24.0'	Coordinate System NAD83 (2011) Adjustment	Coordinates (U.S. Survey Feet)
Azimuth Mark	Grid Azimuth	Grid Distance	Elevation NAVD88 Calculated Using Geoid 12B	
COA-1	275°13'26"	563.03'	State: Texas Zone: North Central Code: 4202	N: 7028839.66 E: 2473582.63 583.42'

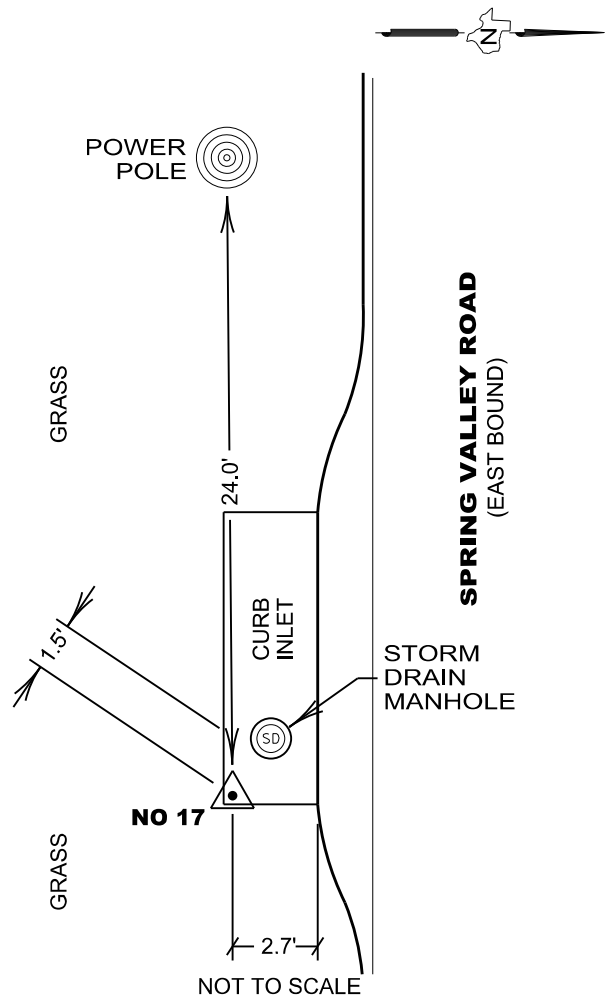


Geodetic Data	Position: NAD83 (2011)		Standard Deviation
	Latitude:	32°56'23.63200" North	0.006'
	Longitude:	96°51'12.59387" West	0.003'
	Ellipsoid Height:	496.01'	0.006'

Approximate Location:

Located at the Southeast corner of a concrete Curb Inlet, 670' +/- East of the intersection of Marsh Lane and Spring Valley Road, 1,530' +/- West of the intersection of Vitruvian Way and Spring Valley Road.

FIELD SKETCH



FACING EAST



FACING WEST

TOWN OF ADDISON CONTROL DATA SHEET

Distance & Direction to Reference & Azimuth Marks			Station Name: NO 18	Surveyor: James B. Gillis, R.P.L.S.
Reference Mark	Direction	Distance (feet)	Type: 3 1/2" Aluminum Disk Stamped "TOWN OF ADDISON NO 18"	
1) Back of Curb	Northwest	7.3'	Survey Method: GNSS <input checked="" type="checkbox"/> TRAV <input type="checkbox"/> OTHER <input type="checkbox"/>	
2) Back of Curb	Southeast	7.1'	Combined Scale Factor: 0.999852375	Date: February 1, 2021
3) Sign	West	11.7'	Coordinate System NAD83 (2011) Adjustment	Coordinates (U.S. Survey Feet)
Azimuth Mark	Grid Azimuth	Grid Distance	Elevation NAVD88 Calculated Using Geoid 12B	
NO 15	232°12'47"	556.50'	State: Texas Zone: North Central Code: 4202	N: 7026881.04 E: 2473738.17 554.01'

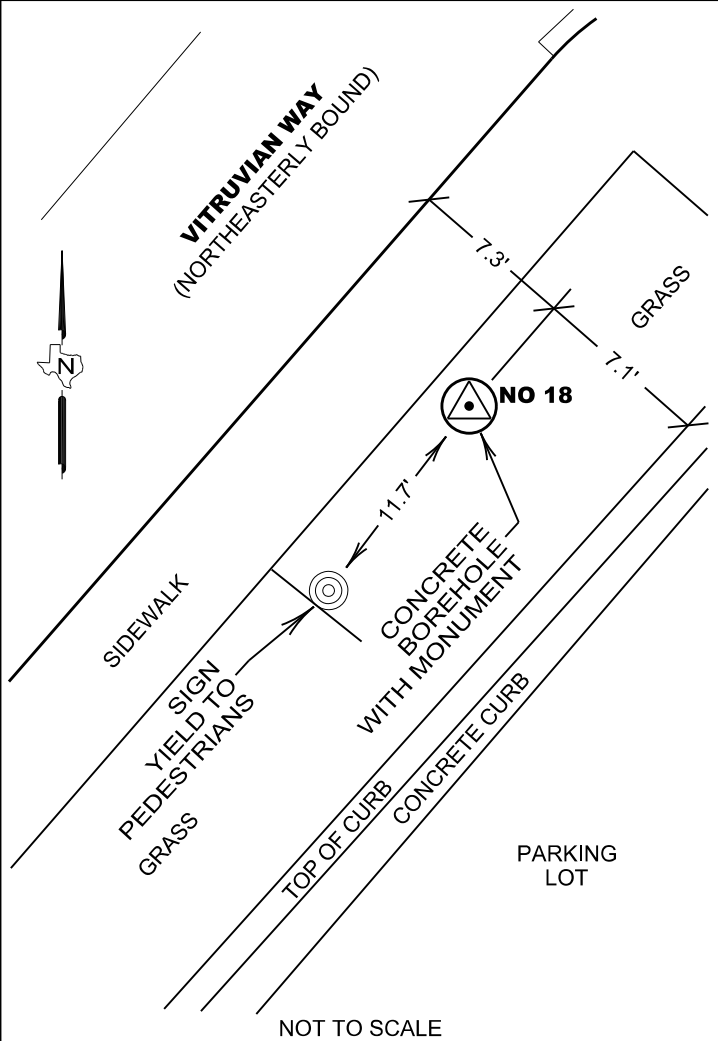


Geodetic Data	Position: NAD83 (2011)		Standard Deviation
	Latitude:	32°56'04.22908" North	0.002'
	Longitude:	96°51'11.12906" West	0.004'
	Ellipsoid Height:	466.60'	0.009'

Approximate Location:

Located within a poured concrete borehole within the southerly Right-of-Way of Vitruvian Way, 34' +/- Southwesterly from the intersection of Park Road and Vitruvian Way, 915' +/- Northwesterly from the intersection of March Land and Vitruvian Way.

FIELD SKETCH



FACING NORTHEAST



FACING SOUTHWEST

TOWN OF ADDISON CONTROL DATA SHEET

Distance & Direction to Reference & Azimuth Marks			Station Name: NO 19	Surveyor: James B. Gillis, R.P.L.S.
Reference Mark	Direction	Distance (feet)	Type: 3 1/2" Aluminum Disk Stamped "TOWN OF ADDISON NO 19"	
1) Edge of Curb	North	3.4'	Survey Method: GNSS <input checked="" type="checkbox"/> TRAV <input type="checkbox"/> OTHER <input type="checkbox"/>	
2) Edge of Sidewalk	South	6.4'	Combined Scale Factor: 0.999849813	Date: February 1, 2021
3) Light Pole	Southeast	6.6'	Coordinate System NAD83 (2011) Adjustment	Coordinates (U.S. Survey Feet)
Azimuth Mark	Grid Azimuth	Grid Distance	Elevation NAVD88 Calculated Using Geoid 12B	
COA-3	297°46'84"	1,002.55'	State: Texas Zone: North Central Code: 4202	N: 7031920.44 E: 2473827.66 597.88'

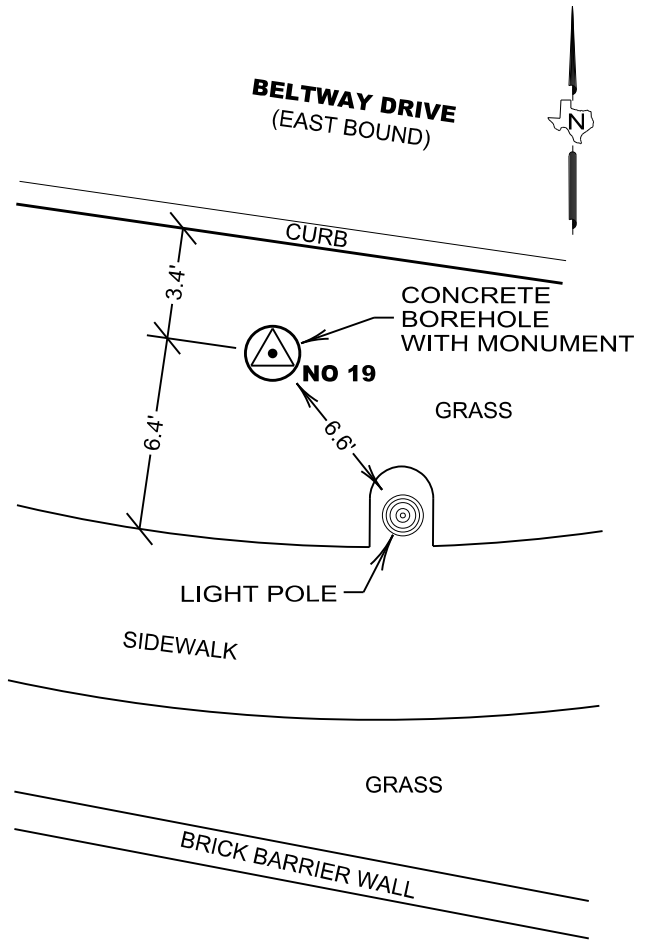


Geodetic Data	Position: NAD83 (2011)		Standard Deviation
	Latitude:	32°56'54.07539" North	0.007'
	Longitude:	96°51'09.15186" West	0.005'
	Ellipsoid Height:	510.50'	0.012'

Approximate Location:

Located within a poured concrete borehole within the southerly Right-of-Way of Beltway Drive, 360' +/- Easterly from the intersection of Les Lacs Avenue and Beltway Drive, 860' +/- Westerly from the intersection of Proton Drive and Beltway Drive.

FIELD SKETCH



FACING EAST



FACING WEST

TOWN OF ADDISON CONTROL DATA SHEET

Distance & Direction to Reference & Azimuth Marks			Station Name: NO 20	Surveyor: James B. Gillis, R.P.L.S.
Reference Mark	Direction	Distance (feet)	Type: 3 1/2" Aluminum Disk Stamped "TOWN OF ADDISON NO 20"	
1) Back of Curb	North	7.2'	Survey Method: GNSS <input checked="" type="checkbox"/> TRAV <input type="checkbox"/> OTHER <input type="checkbox"/>	
2) Traffic Signal Pole	Southeast	23.7'	Combined Scale Factor: 0.999849706	Date: February 1, 2021
3) Light Pole	East	5.7'	Coordinate System NAD83 (2011) Adjustment	Coordinates (U.S. Survey Feet)
Azimuth Mark	Grid Azimuth	Grid Distance	Elevation NAVD88 Calculated Using Geoid 12B	
COA-4	278°14'43"	1,817.02'	State: Texas Zone: North Central Code: 4202	N: 7034458.57 E: 2475473.84 595.65'

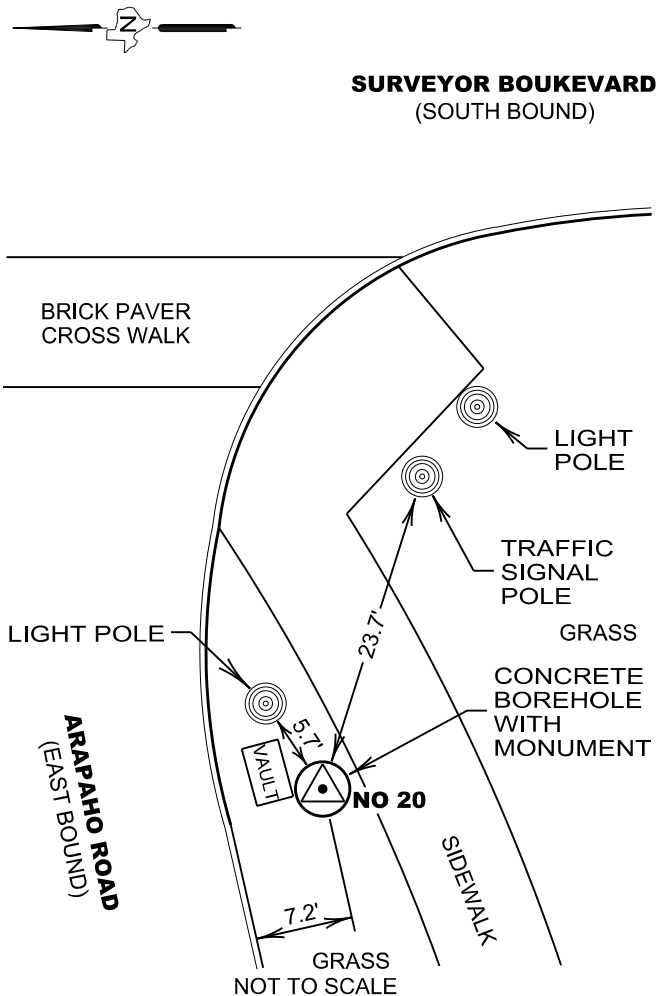


Geodetic Data	Position: NAD83 (2011)		Standard Deviation
	Latitude: 32°57'18.93189" North		0.006'
	Longitude: 96°50'49.36568" West		0.006'
	Ellipsoid Height: 508.36'		0.015'

Approximate Location:

Located within a poured concrete borehole within the southerly Right-of-Way of Arapaho Road, 45' +/- Westerly from the intersection of Surveyor Boulevard and Arapaho Road, 752' +/- Easterly from the intersection of Commercial Drive and Arapaho Road.

FIELD SKETCH



FACING EAST



FACING WEST

TOWN OF ADDISON CONTROL DATA SHEET

Distance & Direction to Reference & Azimuth Marks			Station Name: NO 21	Surveyor: James B. Gillis, R.P.L.S.
Reference Mark	Direction	Distance (feet)	Type: 3 1/2" Aluminum Disk Stamped "TOWN OF ADDISON NO 21"	
1) Storm Drain MH	North	9.4'	Survey Method: GNSS <input checked="" type="checkbox"/> TRAV <input type="checkbox"/> OTHER <input type="checkbox"/>	
2) Back of Curb	West	2.7'	Combined Scale Factor: 0.999850887	Date: February 1, 2021
3) Fiber Optic Vault	East	6.8'	Coordinate System NAD83 (2011) Adjustment	Coordinates (U.S. Survey Feet)
Azimuth Mark	Grid Azimuth	Grid Distance	Elevation NAVD88 Calculated Using Geoid 12B	
COA-2	313°50'53"	527.99'	State: Texas Zone: North Central Code: 4202	N: 7027282.58 E: 2478110.55 584.27'

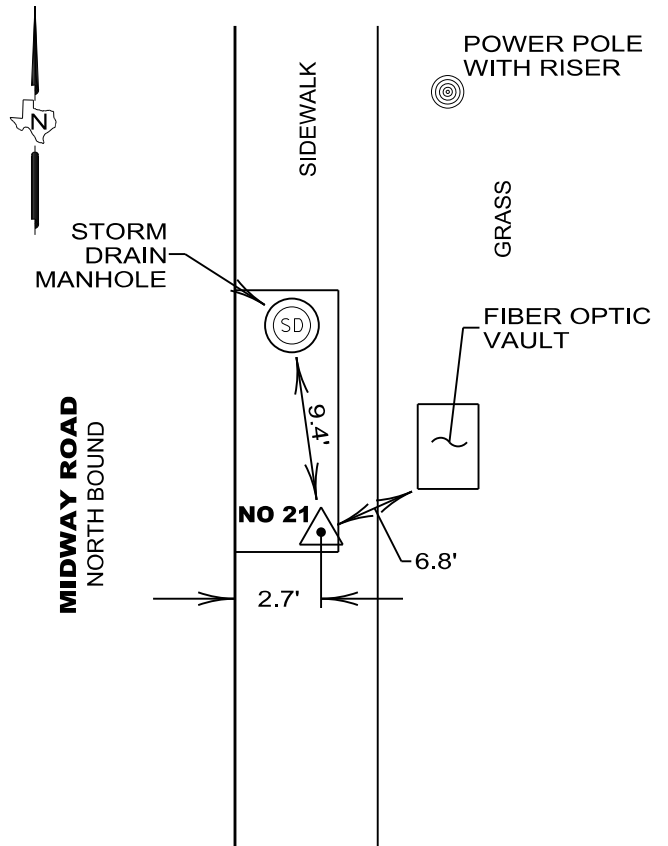


Geodetic Data	Position: NAD83 (2011)		Standard Deviation
	Latitude:	32°56'07.52083" North	0.004'
	Longitude:	96°50'19.75415" West	0.011'
	Ellipsoid Height:	497.04'	0.004'

Approximate Location:

Located at the Southeast corner of a concrete Curb Inlet, 385' +/- South of the intersection of Sigma Road. and Midway Road, 810' +/- North of the intersection of Alpha Road and Midway Road.

FIELD SKETCH



NOT TO SCALE



FACING NORTH



FACING SOUTH

TOWN OF ADDISON CONTROL DATA SHEET

Distance & Direction to Reference & Azimuth Marks			Station Name: NO 22	Surveyor: James B. Gillis, R.P.L.S.
Reference Mark	Direction	Distance (feet)	Type: 3 1/2" Aluminum Disk Stamped "TOWN OF ADDISON NO 22"	
1) Back of Curb	Southwest	3.7'	Survey Method: GNSS <input checked="" type="checkbox"/> TRAV <input type="checkbox"/> OTHER <input type="checkbox"/>	
2) Traffic Pull Box	Northeast	5.0'	Combined Scale Factor: 0.999846919	Date: February 1, 2021
3) Traffic Signal Pole	North	45.6'	Coordinate System NAD83 (2011) Adjustment	Coordinates (U.S. Survey Feet)
Azimuth Mark	Grid Azimuth	Grid Distance	Elevation NAVD88 Calculated Using Geoid 12B	
COA-8	326°49'51"	1,444.11'	State: Texas Zone: North Central Code: 4202	N: 7038045.13 E: 2477977.21 648.13'

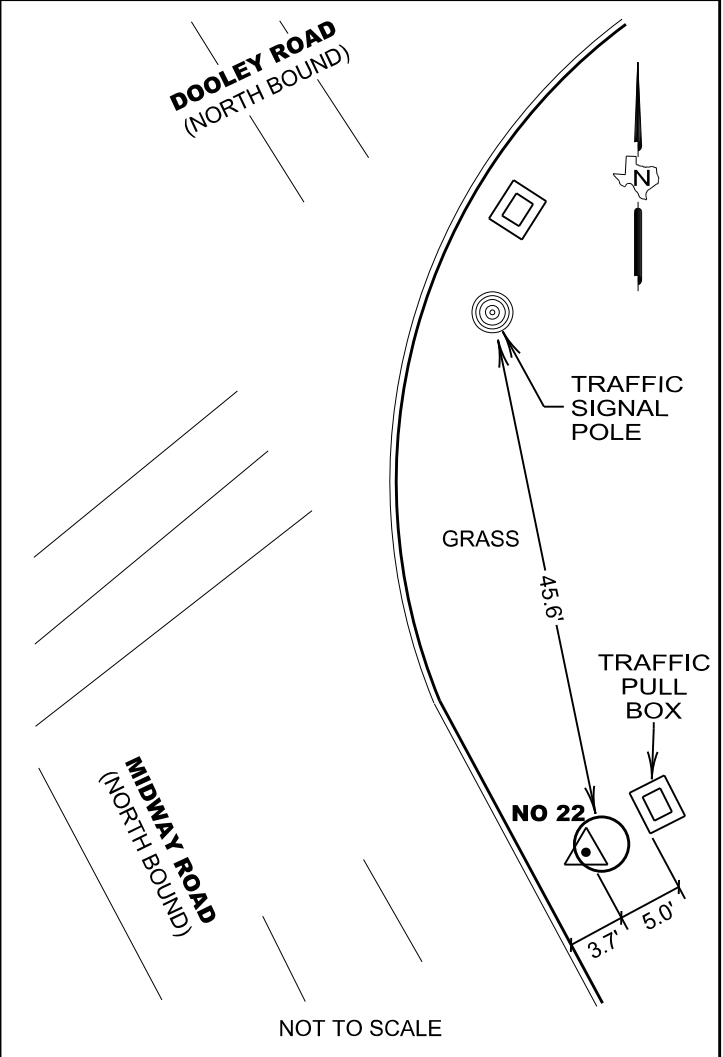


Geodetic Data	Position: NAD83 (2011)		Standard Deviation
	Latitude:	32°57'54.02661" North	0.008'
	Longitude:	96°50'19.32151" West	0.006'
	Ellipsoid Height:	560.96'	0.007'

Approximate Location:

Located within a concrete borehole within the easterly Right-of-Way of Midway Road, 57' +/- Southerly from the intersection of Midway Road and Dooley Road, 268' +/- Northerly from the intersection of Midway Road and Wright Brothers Road.

FIELD SKETCH



FACING SOUTHEAST



FACING NORTHWEST

TOWN OF ADDISON CONTROL DATA SHEET

Distance & Direction to Reference & Azimuth Marks			Station Name: NO 23	Surveyor: James B. Gillis, R.P.L.S.
Reference Mark	Direction	Distance (feet)	Type: 3 1/2" Aluminum Disk Stamped "TOWN OF ADDISON NO 23"	
1) Storm Drain MH	South	6.7'	Survey Method: GNSS <input checked="" type="checkbox"/> TRAV <input type="checkbox"/> OTHER <input type="checkbox"/>	
2) Back of Curb	West	2.5'	Combined Scale Factor: 0.999848182	Date: February 1, 2021
3) Light Pole	Northeast	23.2'	Coordinate System NAD83 (2011) Adjustment	Coordinates (U.S. Survey Feet)
Azimuth Mark	Grid Azimuth	Grid Distance	Elevation NAVD88 Calculated Using Geoid 12B	
COA-7	359°38'47"	1,340.81'	State: Texas Zone: North Central Code: 4202	N: 7041834.26 E: 2476635.44 616.36'

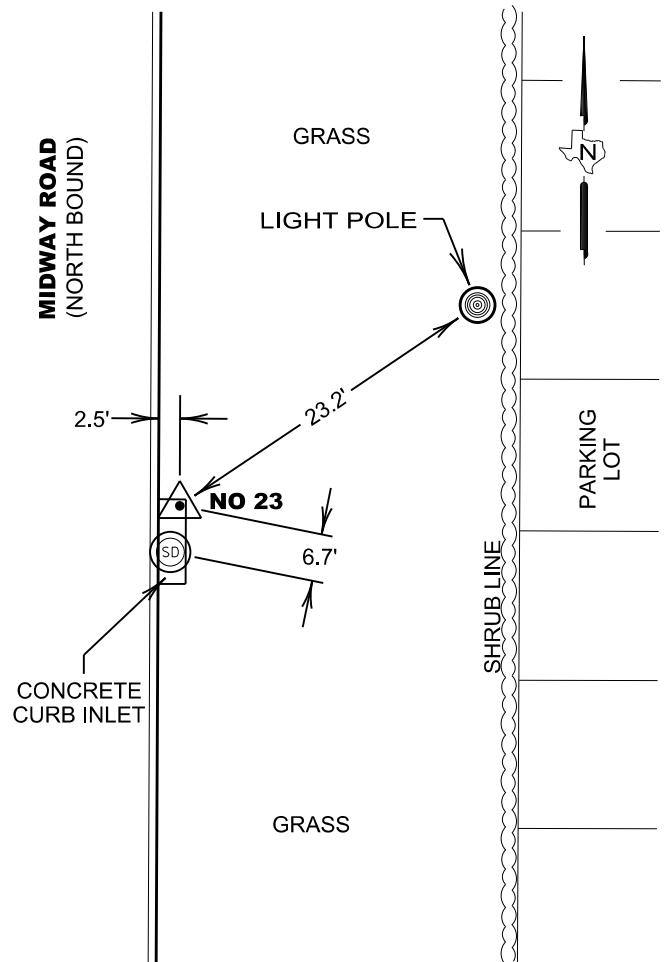


Geodetic Data	Position: NAD83 (2011)		Standard Deviation
	Latitude:	32°58'31.72598" North	0.005'
	Longitude:	96°50'34.36817" West	0.003'
	Ellipsoid Height:	529.17'	0.011'

Approximate Location:

Located at the Northeast corner of a Concrete Curb Inlet, 1,300' +/- North from the intersection of Kellway Drive and Midway Road, 540' +/- South from the intersection of Commander Drive and Midway Road.

FIELD SKETCH



NOT TO SCALE



FACING NORTH



FACING SOUTH

TOWN OF ADDISON CONTROL DATA SHEET

Distance & Direction to Reference & Azimuth Marks			Station Name: NO 24	Surveyor: James B. Gillis, R.P.L.S.
Reference Mark	Direction	Distance (feet)	Type: 3 1/2" Aluminum Disk Stamped "TOWN OF ADDISON NO 24"	
1) Back of Curb	East	6.6'	Survey Method: GNSS <input checked="" type="checkbox"/> TRAV <input type="checkbox"/> OTHER <input type="checkbox"/>	
2) Back of Curb	West	2.4'	Combined Scale Factor: 0.999846602	Date: February 1, 2021
3) Power Pole	South	25.2'	Coordinate System NAD83 (2011) Adjustment	Coordinates (U.S. Survey Feet)
Azimuth Mark	Grid Azimuth	Grid Distance	Elevation NAVD88 Calculated Using Geoid 12B	
NO 6	01°34'28"	1,428.25'	State: Texas Zone: North Central Code: 4202	N: 7044138.38 E: 2480483.06 646.35'

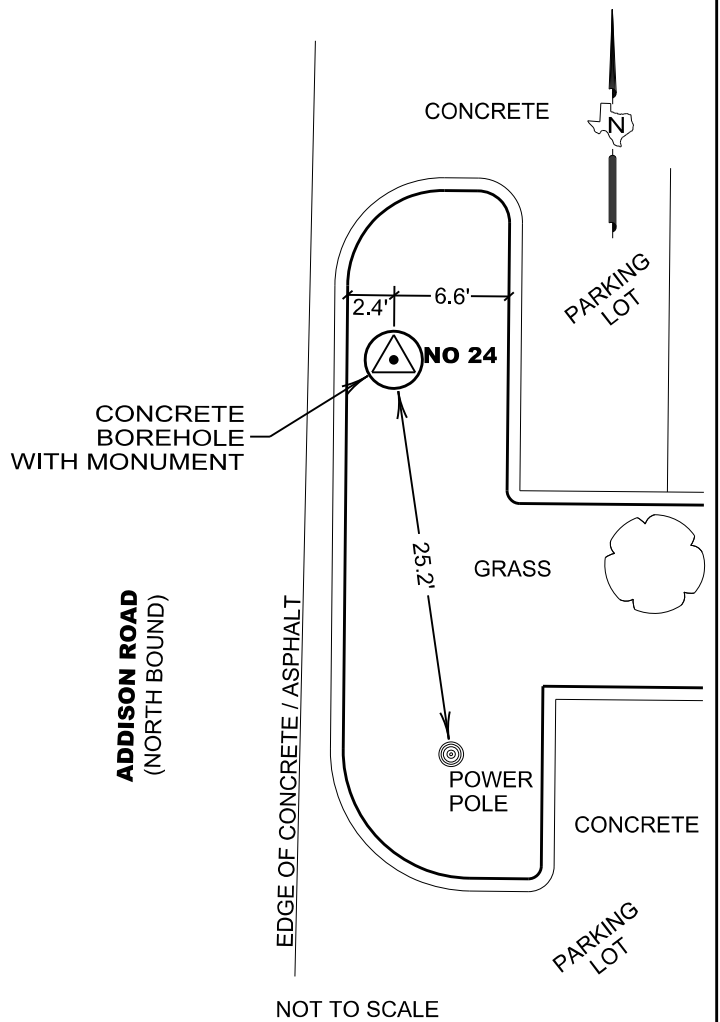


Geodetic Data	Position: NAD83 (2011)		Standard Deviation
	Latitude:	32°58'53.92007" North	0.007'
	Longitude:	96°49'48.77379" West	0.006'
	Ellipsoid Height:	559.33'	0.006'

Approximate Location:

Located within a concrete borehole within the easterly Right-of-Way of Addison Road, 737' +/- North from the intersection of Excel Parkway and Addison Road, 584' +/- South from the intersection of Sojourn Drive and Addison Road.

FIELD SKETCH



FACING NORTH



FACING SOUTH

TOWN OF ADDISON CONTROL DATA SHEET

Distance & Direction to Reference & Azimuth Marks			Station Name: NO 25	Surveyor: James B. Gillis, R.P.L.S.
Reference Mark	Direction	Distance (feet)	Type: 3 1/2" Aluminum Disk Stamped "TOWN OF ADDISON NO 25"	
1) Guardrail	North	2.3'	Survey Method: GNSS <input checked="" type="checkbox"/> TRAV <input type="checkbox"/> OTHER <input type="checkbox"/>	
2) Chain Link Fence	South	5.6'	Combined Scale Factor: 0.999847632	Date: February 1, 2021
3) Back of Curb	North	6.2'	Coordinate System NAD83 (2011) Adjustment	Coordinates (U.S. Survey Feet)
Azimuth Mark	Grid Azimuth	Grid Distance	Elevation NAVD88 Calculated Using Geoid 12B	
COA-13	88°04'48"	1,581.55'	State: Texas Zone: North Central Code: 4202	N: 7041975.94 E: 2478239.93 627.64'

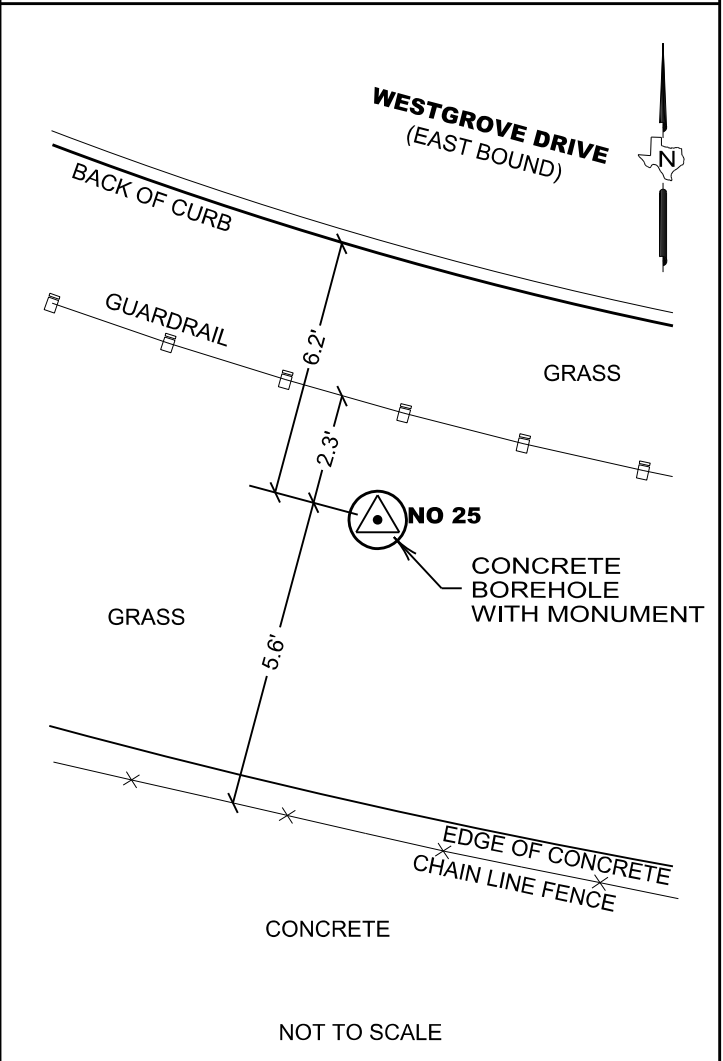


Geodetic Data	Position: NAD83 (2011)		Standard Deviation
	Latitude:	32°58'32.87693" North	0.006'
	Longitude:	96°50'15.50790" West	0.003'
	Ellipsoid Height:	540.52'	0.009'

Approximate Location:

Located within a poured concrete borehole at the southerly Right-of-Way line of Westgrove Drive at its intersection with Sunbelt Drive, 515' +/- West from the intersection of Amelia Earhart Drive and Westgrove Drive.

FIELD SKETCH



FACING EAST



FACING NORTHWEST

TOWN OF ADDISON CONTROL DATA SHEET

Distance & Direction to Reference & Azimuth Marks			Station Name: NO 26	Surveyor: James B. Gillis, R.P.L.S.
Reference Mark	Direction	Distance (feet)	Type: 3 1/2" Aluminum Disk Stamped "TOWN OF ADDISON NO 26"	
1) Storm Drain MH	Southeast	4.5'	Survey Method: GNSS <input checked="" type="checkbox"/> TRAV <input type="checkbox"/> OTHER <input type="checkbox"/>	
2) Storm Drain MH	North	50.0'	Combined Scale Factor: 0.999848412	Date: February 1, 2021
3) Water Valve	South	51.8'	Coordinate System NAD83 (2011) Adjustment	Coordinates (U.S. Survey Feet)
Azimuth Mark	Grid Azimuth	Grid Distance	Elevation NAVD88 Calculated Using Geoid 12B	
COA-9	337°59'42"	618.65'	State: Texas Zone: North Central Code: 4202	N: 7040912.24 E: 2483104.21 612.69'

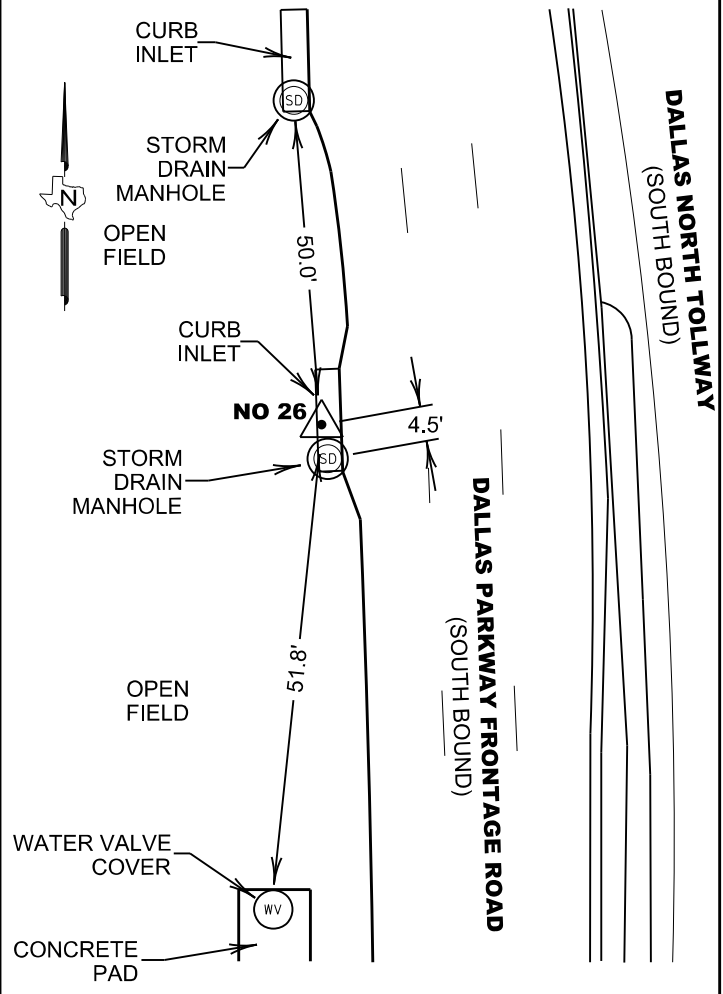


Geodetic Data	Position: NAD83 (2011)		Standard Deviation
	Latitude:	32°58'21.58743" North	0.003'
	Longitude:	96°49'18.60901" West	0.003'
	Ellipsoid Height:	525.75'	0.007'

Approximate Location:

Located along the westerly side of a concrete Drain Inlet along the Westerly Right-of-Way of the South bound Dallas Parkway Service Road, 1,095' +/- Southeasterly from the intersection of Westgrove Drive and the Dallas Parkway Service Road, 1,482' +/- North from the intersection of Keller Springs Road and the Dallas Parkway Service Road.

FIELD SKETCH



NOT TO SCALE



FACING NORTH



FACING SOUTH

TOWN OF ADDISON CONTROL DATA SHEET

Distance & Direction to Reference & Azimuth Marks			Station Name: NO 27	Surveyor: James B. Gillis, R.P.L.S.
Reference Mark	Direction	Distance (feet)	Type: 3 1/2" Aluminum Disk Stamped "TOWN OF ADDISON NO 27"	
1) Pull Box	East	5.4'	Survey Method: GNSS <input checked="" type="checkbox"/> TRAV <input type="checkbox"/> OTHER <input type="checkbox"/>	
2) Traffic Pole	Northeast	9.0'	Combined Scale Factor: 0.999847190	Date: February 1, 2021
3) Pull Box	Northwest	10.4'	Coordinate System NAD83 (2011) Adjustment	Coordinates (U.S. Survey Feet)
Azimuth Mark	Grid Azimuth	Grid Distance	Elevation NAVD88 Calculated Using Geoid 12B	
NO 12	273°07'55"	1,262.04'	State: Texas Zone: North Central Code: 4202	N: 7039375.74 E: 2481970.29 640.43'

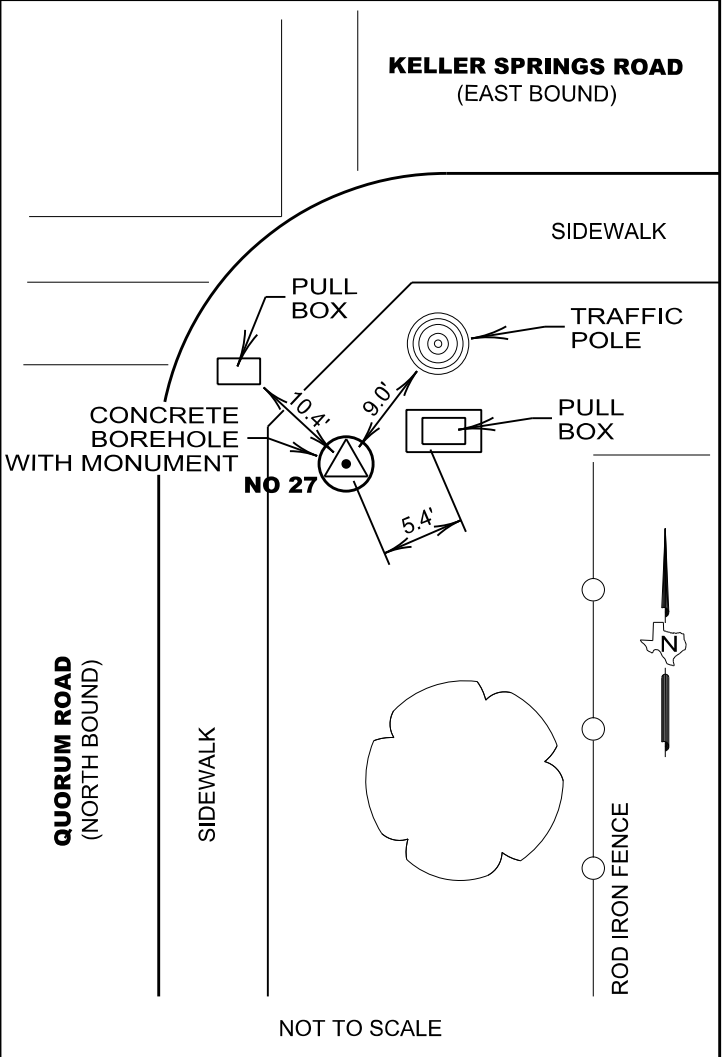


Geodetic Data	Position: NAD83 (2011)		Standard Deviation
	Latitude:	32°58'06.56437" North	0.006'
	Longitude:	96°49'32.20634" West	0.012'
	Ellipsoid Height:	553.43'	0.012'

Approximate Location:

Located within a poured concrete borehole 36' +/- from the Southwest intersection corner of Quorum Drive and Keller Springs Road, 1,289' +/- West from the intersection of Dallas North Tollway and Keller Springs Drive.

FIELD SKETCH



FACING NORTH



FACING SOUTH

TOWN OF ADDISON CONTROL DATA SHEET

Distance & Direction to Reference & Azimuth Marks			Station Name: NO 28	Surveyor: James B. Gillis, R.P.L.S.
Reference Mark	Direction	Distance (feet)	Type: 3 1/2" Aluminum Disk Stamped "TOWN OF ADDISON NO 28"	
1) Turn Right Sign	South	5.9'	Survey Method: GNSS <input checked="" type="checkbox"/> TRAV <input type="checkbox"/> OTHER <input type="checkbox"/>	
2) Water Meter	East	9.2'	Combined Scale Factor: 0.999847133	Date: February 1, 2021
3) Water Meter	East	10.6'	Coordinate System NAD83 (2011) Adjustment	Coordinates (U.S. Survey Feet)
Azimuth Mark	Grid Azimuth	Grid Distance	Elevation NAVD88 Calculated Using Geoid 12B	
NO 5	81°06'08"	1,022.60'	State: Texas Zone: North Central Code: 4202	N: 7034032.25 E: 2481948.96 650.08'

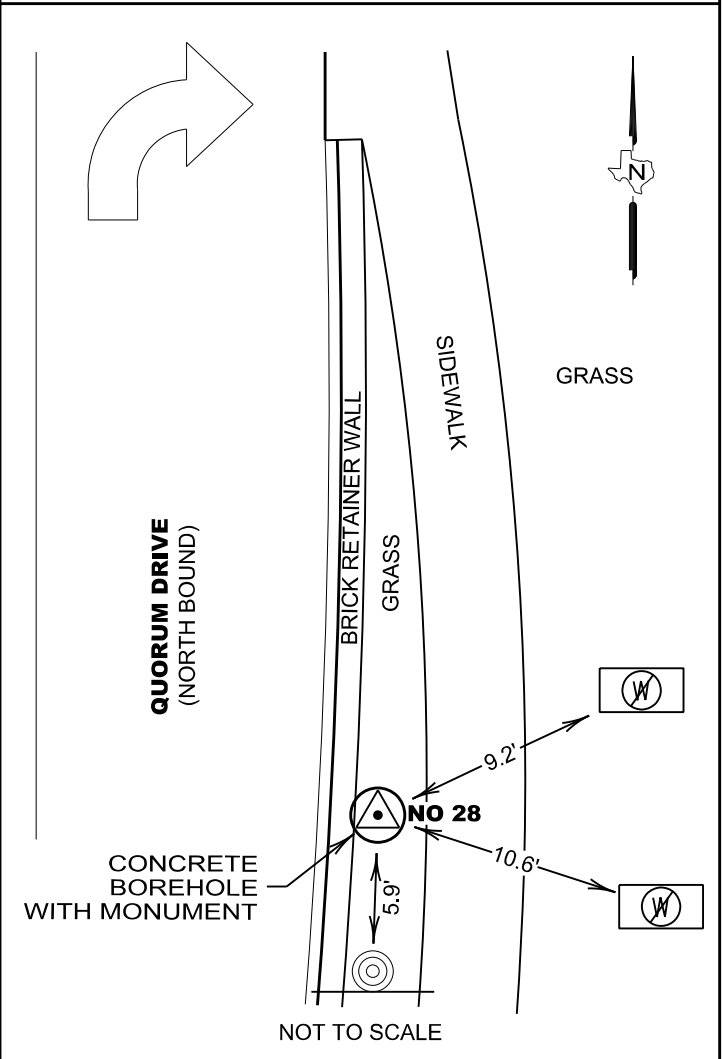


Geodetic Data	Position: NAD83 (2011)		Standard Deviation
	Latitude:	32°57'13.69931" North	0.005'
	Longitude:	96°49'33.45613" West	0.006'
	Ellipsoid Height:	563.04'	0.009'

Approximate Location:

Located within a poured concrete borehole along the easterly Right of-Way of Quorum Drive, 53' South from the intersection of Quorum Drive and Belt Line Road, 1,925' +/- North of the intersection of Landmark Place and Quorum Drive.

FIELD SKETCH



FACING NORTH



FACING SOUTH

TOWN OF ADDISON CONTROL DATA SHEET

Distance & Direction to Reference & Azimuth Marks			Station Name: NO 29	Surveyor: James B. Gillis, R.P.L.S.
Reference Mark	Direction	Distance (feet)	Type: 3 1/2" Aluminum Disk Stamped "TOWN OF ADDISON NO 29"	
1) Storm Drain MH	East	5.4'	Survey Method: GNSS <input checked="" type="checkbox"/> TRAV <input type="checkbox"/> OTHER <input type="checkbox"/>	
2) Back of Curb	North	2.7'	Combined Scale Factor: 0.999848720	Date: February 1, 2021
3) Irrigation Control Valve	South	31.3'	Coordinate System NAD83 (2011) Adjustment	Coordinates (U.S. Survey Feet)
Azimuth Mark	Grid Azimuth	Grid Distance	Elevation NAVD88 Calculated Using Geoid 12B	
NO 30	81°18'02"	410.72'	State: Texas Zone: North Central Code: 4202	N: 7030466.13 E: 2482161.37 623.29'

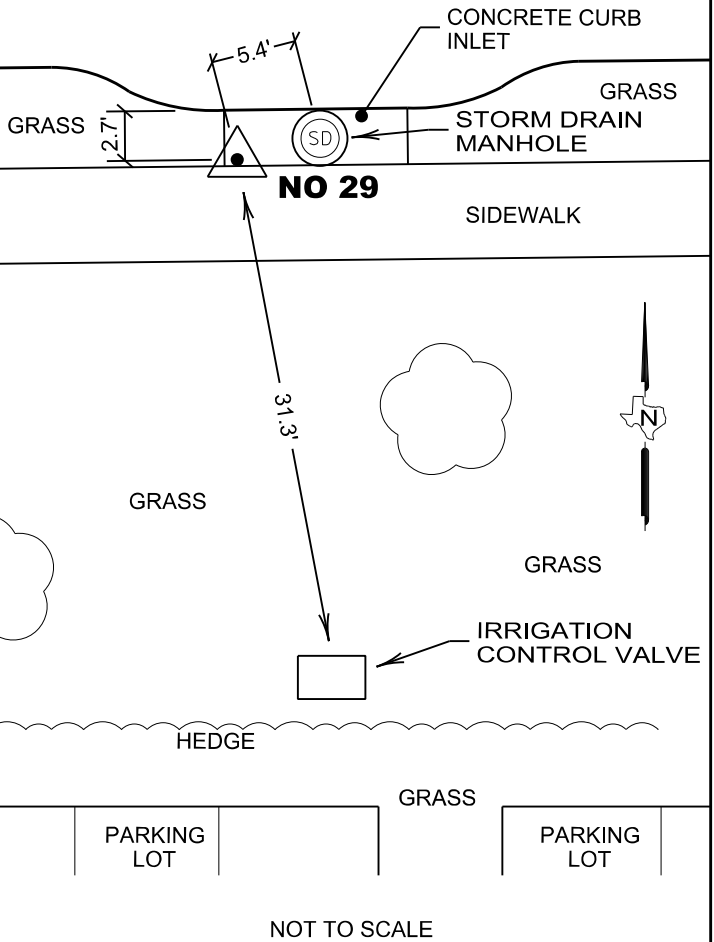


Geodetic Data	Position: NAD83 (2011)		Standard Deviation
	Latitude: 32°56'38.38257" North		0.003'
	Longitude: 96°49'31.63058" West		0.003'
	Ellipsoid Height: 536.24'		0.007'

Approximate Location:
 Located at the Southwest corner of a concret Drain Inlet along the southerly Right-of-Way of Landmark Boulevard, 437' +/- West from the end of the road of Landmark Boulevard.

FIELD SKETCH

LANDMARK BOULEVARD (EAST BOUND)



FACING EAST



FACING WEST

TOWN OF ADDISON CONTROL DATA SHEET

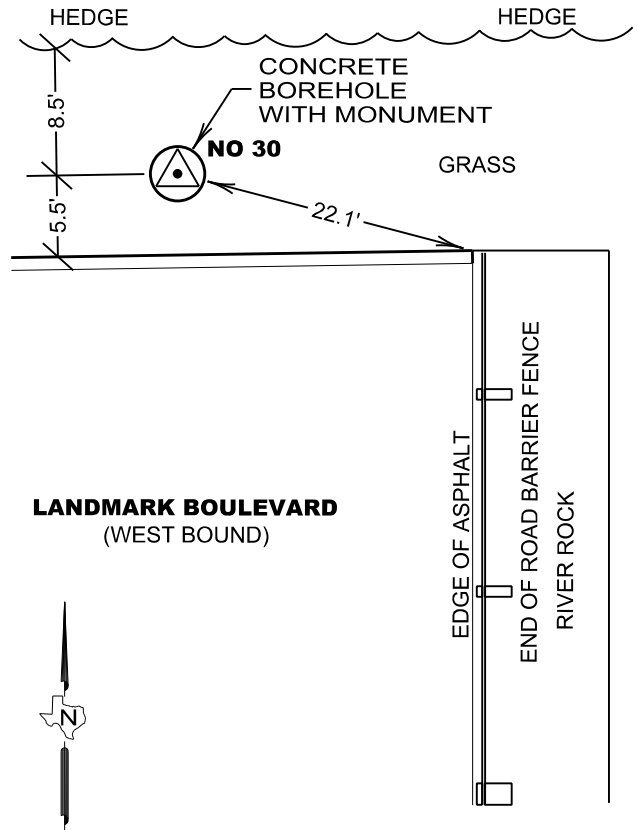
Distance & Direction to Reference & Azimuth Marks			Station Name: NO 30	Surveyor: James B. Gillis, R.P.L.S.
Reference Mark	Direction	Distance (feet)	Type: 3 1/2" Aluminum Disk Stamped "TOWN OF ADDISON NO 30"	
1) Back of Curb	South	5.5'	Survey Method: GNSS <input checked="" type="checkbox"/> TRAV <input type="checkbox"/> OTHER <input type="checkbox"/>	
2) Edge of Hedge	North	8.5'	Combined Scale Factor: 0.999848744	Date: February 1, 2021
3) End of Curbline	East	22.1'	Coordinate System NAD83 (2011) Adjustment	Coordinates (U.S. Survey Feet)
Azimuth Mark	Grid Azimuth	Grid Distance	Elevation NAVD88 Calculated Using Geoid 12B	
NO 29	261°18'02"	410.72'	State: Texas Zone: North Central Code: 4202	N: 7030528.25 E: 2482567.36 622.66'



Geodetic Data	Position: NAD83 (2011)		Standard Deviation
	Latitude:	32°56'38.93314" North	0.005'
	Longitude:	96°49'26.85501" West	0.003'
	Ellipsoid Height:	535.63'	0.010'

Approximate Location:
 Located within a poured concrete borehole along the northerly Right-of-Way of Landmark Boulevard, 26' +/- West from the end of the road of Landmark Boulevard.

FIELD SKETCH



FACING EAST



FACING WEST

TOWN OF ADDISON CONTROL DATA SHEET

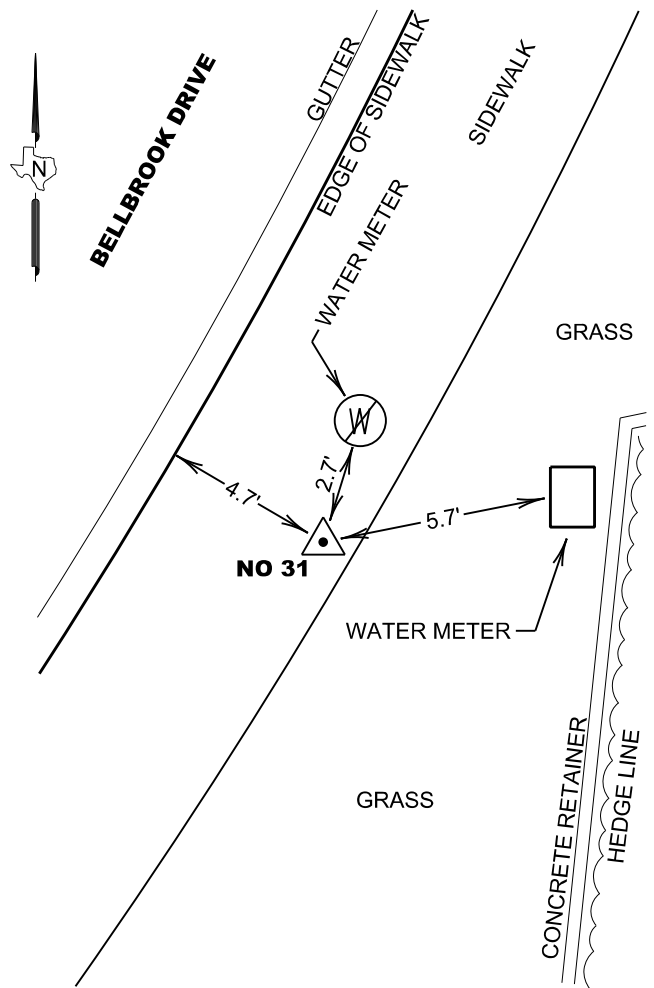
Distance & Direction to Reference & Azimuth Marks			Station Name: NO 31	Surveyor: James B. Gillis, R.P.L.S.
Reference Mark	Direction	Distance (feet)	Type: 3 1/2" Aluminum Disk Stamped "TOWN OF ADDISON NO 31"	
1) Water Meter Medal Cover	North	2.7'	Survey Method: GNSS <input checked="" type="checkbox"/> TRAV <input type="checkbox"/> OTHER <input type="checkbox"/>	
2) Water Meter Plastic Cover	East	5.7'	Combined Scale Factor: 0.999850691	Date: February 1, 2021
3) Back of Curb	West	4.7'	Coordinate System NAD83 (2011) Adjustment	Coordinates (U.S. Survey Feet)
Azimuth Mark	Grid Azimuth	Grid Distance	Elevation NAVD88 Calculated Using Geoid 12B	
COA-10	239°03'24"	308.13'	State: Texas Zone: North Central Code: 4202	N: 7032307.21 E: 2486328.29 578.67'



Geodetic Data	Position: NAD83 (2011)		Standard Deviation
	Latitude:	32°56'55.93836" North	0.004'
	Longitude:	96°48'42.38847" West	0.002'
	Ellipsoid Height:	491.79'	0.009'

Approximate Location:
 Located within a concrete sidewalk along the Southeastly Right-of-Way of Bellbrook Drive, 122' +/- Northeast of the intersection of Havenshire Place and Bellbrook Drive.

FIELD SKETCH



NOT TO SCALE



FACING NORTHEAST



FACING SOUTHWEST

TOWN OF ADDISON CONTROL DATA SHEET

Distance & Direction to Reference & Azimuth Marks			Station Name: NO 32	Surveyor: James B. Gillis, R.P.L.S.
Reference Mark	Direction	Distance (feet)	Type: 3 1/2" Aluminum Disk Stamped "TOWN OF ADDISON NO 32"	
1) Back of Curb	East	2.5'	Survey Method: GNSS <input checked="" type="checkbox"/> TRAV <input type="checkbox"/> OTHER <input type="checkbox"/>	
2) Storm Drain MH	South	9.8'	Combined Scale Factor: 0.999849799	Date: February 1, 2021
3) Traffic Signal Pull Box	North	15.0'	Coordinate System NAD83 (2011) Adjustment	Coordinates (U.S. Survey Feet)
Azimuth Mark	Grid Azimuth	Grid Distance	Elevation NAVD88 Calculated Using Geoid 12B	
NO 33	359°22'15"	1,199.02'	State: Texas Zone: North Central Code: 4202	N: 7031164.89 E: 2477977.68 599.48'

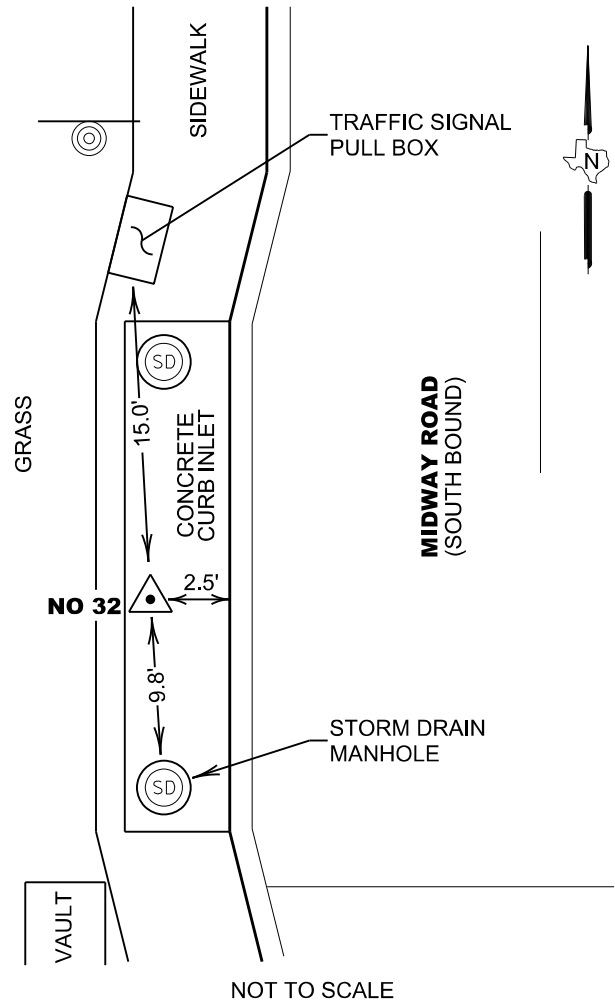


Geodetic Data	Position: NAD83 (2011)		Standard Deviation
	Latitude:	32°56'45.95334" North	0.004'
	Longitude:	96°50'20.59281" West	0.003'
	Ellipsoid Height:	512.26'	0.012'

Approximate Location:

Located at the Westerly edge of a concrete curb Inlet, 63' +/- North of the intersection of Proton Road and Midway Road, 1,125' +/- South from the intersection of Beltwood Parkway and Midway Road.

FIELD SKETCH



FACING NORTH



FACING SOUTH

NOT TO SCALE

TOWN OF ADDISON CONTROL DATA SHEET

Distance & Direction to Reference & Azimuth Marks			Station Name: NO 33	Surveyor: James B. Gillis, R.P.L.S.
Reference Mark	Direction	Distance (feet)	Type: 3 1/2" Aluminum Disk Stamped "TOWN OF ADDISON NO 33"	
1) Back of Curb	East	2.0'	Survey Method: GNSS <input checked="" type="checkbox"/> TRAV <input type="checkbox"/> OTHER <input type="checkbox"/>	
2) Storm Drain MH	South	8.8'	Combined Scale Factor: 0.999848913	Date: February 1, 2021
3) Hedge	West	15.1'	Coordinate System NAD83 (2011) Adjustment	Coordinates (U.S. Survey Feet)
Azimuth Mark	Grid Azimuth	Grid Distance	Elevation NAVD88 Calculated Using Geoid 12B	
NO 32	179°22'15"	1,199.02'	State: Texas Zone: North Central Code: 4202	N: 7032363.84 E: 2477964.52 615.84'

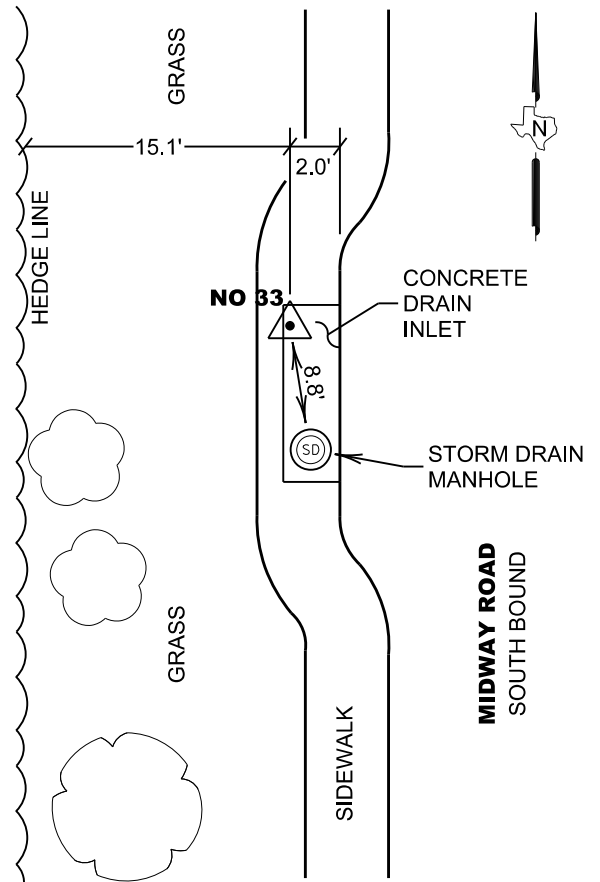


Geodetic Data	Position: NAD83 (2011)		Standard Deviation
	Latitude:	32°56'57.81785" North	0.008'
	Longitude:	96°50'20.52484" West	0.006'
	Ellipsoid Height:	528.63'	0.013'

Approximate Location:

Located at the Northwest corner of a concrete curb Inlet, 53' +/- North from the intersection of Beltwook Parkway and Midway Road, 955' +/- South from the intersection of Beltway Drive and Midway Road.

FIELD SKETCH



NOT TO SCALE



FACING SOUTH



FACING NORTH